

STATE OF ILLINOIS
DEPARTMENT OF TRANSPORTATION
DIVISION OF HIGHWAYS
**PROPOSED
CONTRACT MAINTENANCE**

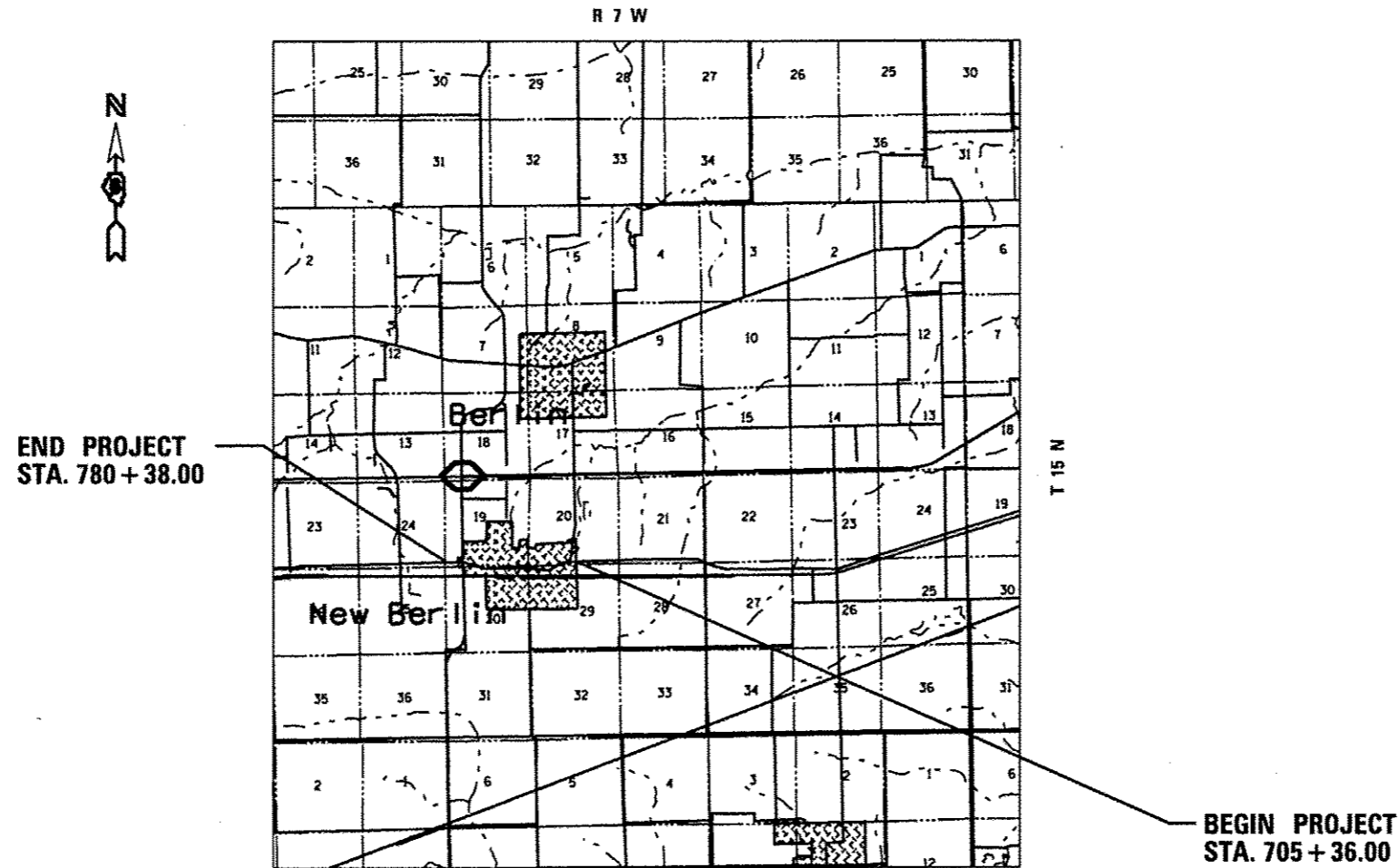
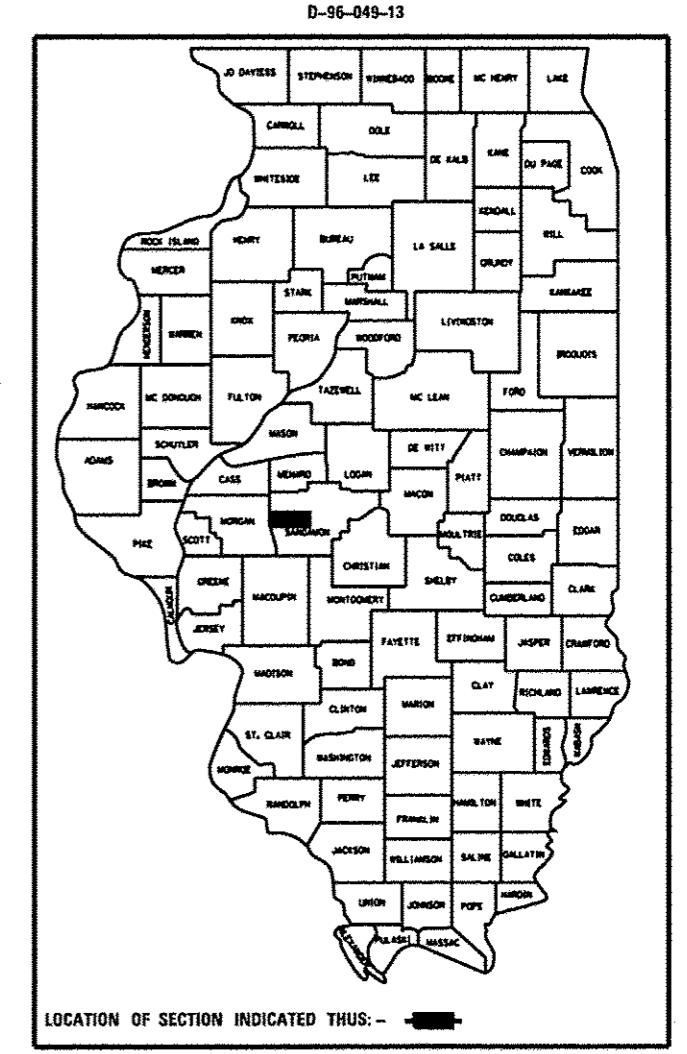
FOR INDEX OF SHEETS, SEE SHEET NO. 2

FAS 1613 (OLD US 36)
SECTION (23)I-2

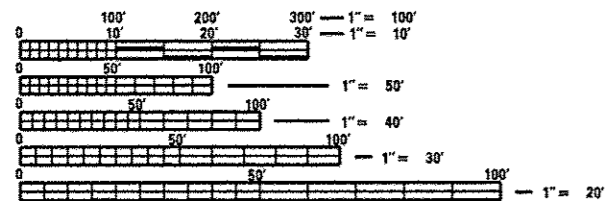
SANGAMON COUNTY

C-96-049-13

F.A.S. RTCL	SECTION	COUNTY	TOTAL SHEETS	SHEET NO.
1613	(23)I-2	SANGAMON	5	1
FED. ROAD DIST. NO.	ILLINOIS	CONTRACT NO. 72G14		



ADT = 2,050(75)



FULL SIZE PLANS HAVE BEEN PREPARED USING STANDARD ENGINEERING SCALES. REDUCED SIZED PLANS WILL NOT CONFORM TO STANDARD SCALES. IN MAKING MEASUREMENTS ON REDUCED PLANS, THE ABOVE SCALES MAY BE USED.

J.U.L.I.E.
JOINT UTILITY LOCATION INFORMATION FOR EXCAVATION
1-800-892-0123
OR 811

PLAN AND CONTRACT TECHNICIAN
TIMOTHY SHARP (217)782-7743

CONTRACT NO. 72G14

GROSS LENGTH = 7,364.90 FT. = 1.395 MILES

STATE OF ILLINOIS
DEPARTMENT OF TRANSPORTATION
DIVISION OF HIGHWAYS

SUBMITTED March 29, 2013
Ron Zank
DEPUTY DIRECTOR OF HIGHWAYS, REGION ENGINEER

April 26, 2013
John D. Baranzelli, P.E.
ENGINEER OF DESIGN AND ENVIRONMENT

April 26, 2013
Omur Osman, P.E.
DIRECTOR OF HIGHWAYS, CHIEF ENGINEER

**PRINTED BY THE AUTHORITY
OF THE STATE OF ILLINOIS**

INDEX OF SHEETS

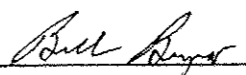
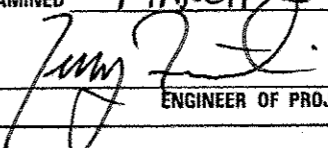

- 1. COVER
- 2. INDEX OF SHEETS, GENERAL NOTES, AND HIGHWAY STANDARDS
- 3. SUMMARY OF QUANTITIES
- 4-5. TYPICAL SECTIONS

HIGHWAY STANDARDS

- 701001-02
- 701006-04
- 701311-03
- 701501-06
- 701901-02
- 780001-03

GENERAL NOTES

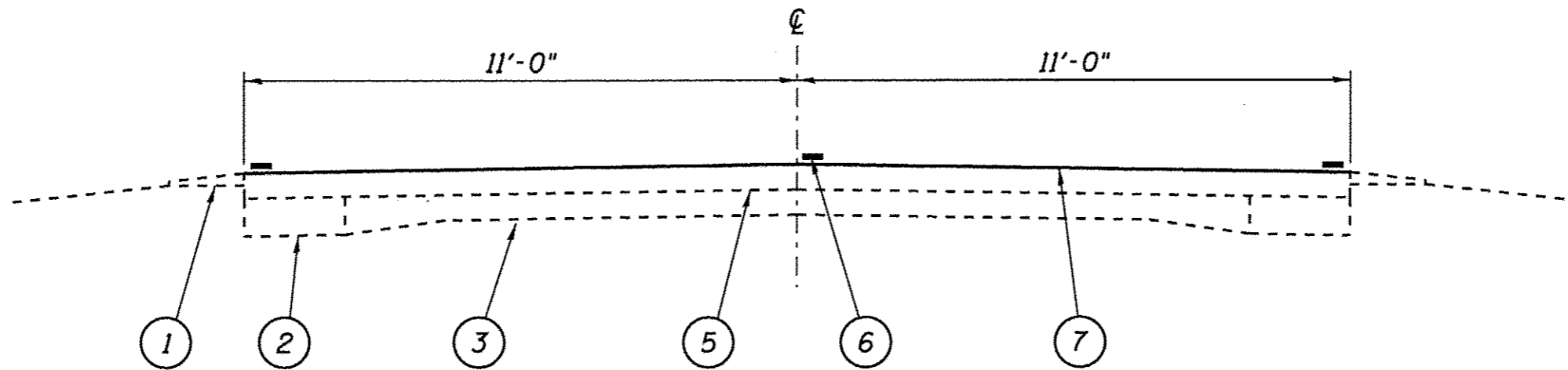
- 1. ANY REFERENCE TO THE STANDARDS THROUGHOUT THE PLANS SHALL BE INTERPRETED TO BE THE LATEST STANDARDS OF THE DEPARTMENT AS INCLUDED IN THE PLANS.
- 2. NO EXCAVATION IS ANTICIPATED ON THIS PROJECT. SHOULD ANY EXCAVATION BE REQUIRED, J.U.L.I.E. SHALL BE NOTIFIED A MINIMUM OF 48 HOURS IN ADVANCE (800) 892-0123.
- 3. THE CONTRACTOR SHALL GIVE I.D.O.T. OPERATIONS TWO WEEKS NOTICE PRIOR TO STARTING WORK IN ORDER FOR I.D.O.T. TO COMPLETE PATCHING AND R.R.P.M. COVERING.
- 4. THE AGGREGATE FOR THE MICRO-SURFACING SHALL MEET THE FRICTION AGGREGATE REQUIREMENTS FOR MIXTURE "C" IN ARTICLE 1009.03(a).
- 5. THE AGGREGATE GRADATION FOR THE A-1 BITUMINOUS SURFACE TREATMENT SHALL BE CA-16 OR CA-20.
- 6. THE AGGREGATE FOR THE A-1 BITUMINOUS SURFACE TREATMENT SHALL BE CRUSHED LIMESTONE.
- 7. SHORT-TERM PAVEMENT MARKING SHALL BE PAINT, TAPE WILL NOT BE ALLOWED

STATE OF ILLINOIS DEPARTMENT OF TRANSPORTATION DIVISION OF HIGHWAYS DISTRICT 6	
EXAMINED	3/19 20 13  ENGINEER OF OPERATIONS
EXAMINED	MARCH 5 20 13  ENGINEER OF PROJECT IMPLEMENTATION
EXAMINED	March 6 20 13  ENGINEER OF PROGRAM DEVELOPMENT

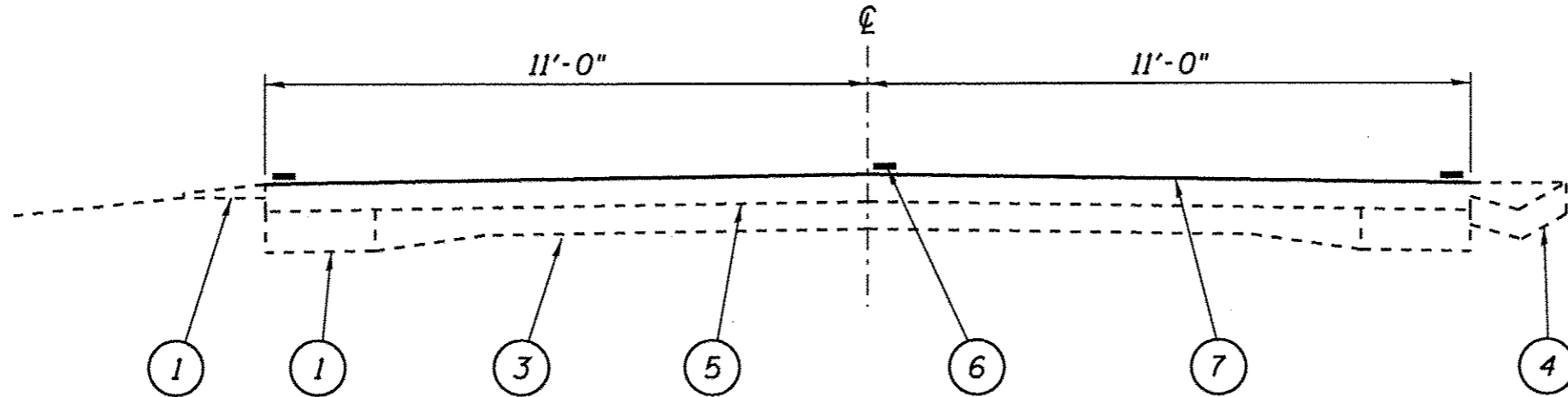
FILE NAME *	USER NAME * #USERS	DESIGNED -	REVISED -	STATE OF ILLINOIS DEPARTMENT OF TRANSPORTATION	INDEX OF SHEETS, HIGHWAY STANDARDS AND GENERAL NOTES	F.A.S. RTE.	SECTION	COUNTY	TOTAL SHEETS	SHEET NO.
#FILES		DRAWN -	REVISED -			1613	2301-2	SANGAMON	5	2
Default		CHECKED -	REVISED -		SCALE: _____					
		DATE -	REVISED -		SHEET 1 OF 1 SHEETS					
					STA. _____ TO STA. _____					
										ILLINOIS FED. AID PROJECT

CODE NO.	ITEM	UNIT	TOTAL QUANTITY	CONSTR. CODE
				ROADWAY 0005 S. N.
67100100	MOBILIZATION	L SUM	1	1
70102620	TRAFFIC CONTROL AND PROTECTION, STANDARD 701501	L SUM	1	1
70300100	SHORT-TERM PAVEMENT MARKING	FOOT	736	736
78001120	PAINT PAVEMENT MARKING - LINE 5"	FOOT	16,570	16,570
Z0064265	CAPE SEAL	SO YD	19,804	19,804

PAVEMENT MARKING SCHEDULE			
STATION	TYPE	PAINT PAV'T MRK - LINE 5"	
		YELLOW	WHITE
STA. 705+36 TO 780+38*	EDGE		14,730 FT
STA. 705+36 TO 780+38*	SKIP DASH	1,840 FT	
TOTALS		1,840 FT	14,730 FT
*STA. EQ. 722+74.3bk=722+78.1ah			
*STA. EQ. 774+16.7bk=775+50.0ah			



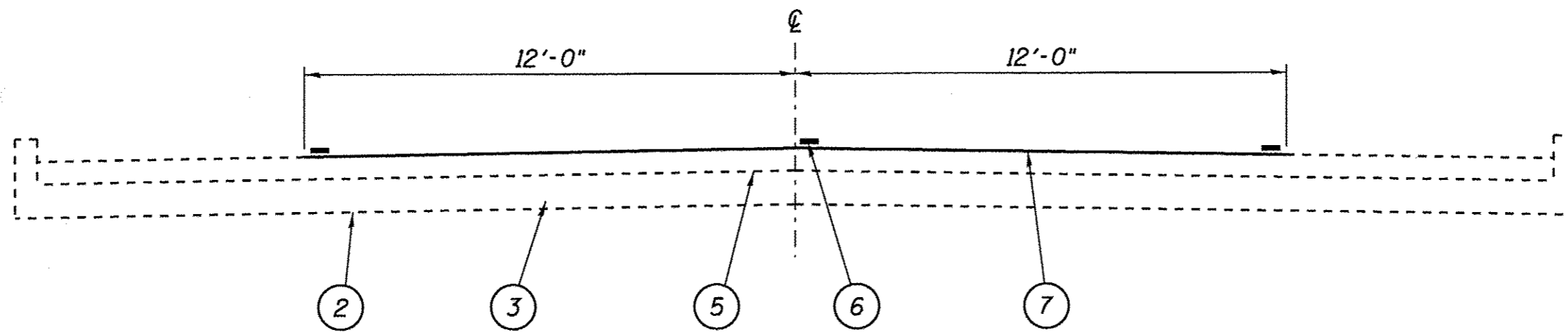
STA. 705+36 TO 709+50
 STA. 712+75 TO 723+00
 STA. 760+87 TO 762+25
 STA. 765+00 TO 768+90
 STA. 770+00 TO 780+38



GUTTER RT. STA. 709+50 TO 712+75
 GUTTER RT. STA. 762+25 TO 765+00
 GUTTER LT. STA. 766+90 TO 770+00

LEGEND

- 1 - EXIST. AGG. SHOULDER
- 2 - EXIST. WIDENING
- 3 - EXIST. P.C.C. PAVEMENT
- 4 - EXIST. GUTTER
- 5 - EXIST. H.M.A. SURFACE
- 6 - PROP. PAINT PAVEMENT MARKING - LINE 5"
- 7 - PROP. CAPE SEAL



STA. 723+00 TO 760+87

LEGEND

- 1 - EXIST. AGG. SHOULDER
- 2 - EXIST. WIDENING
- 3 - EXIST. P.C.C. PAVEMENT
- 4 - EXIST. GUTTER
- 5 - EXIST. H.M.A. SURFACE
- 6 - PROP. PAINT PAVEMENT MARKING - LINE 5"
- 7 - PROP. CAPE SEAL

FILE NAME * #FILE#	USER NAME * #USER#	DESIGNED -	REVISED -	STATE OF ILLINOIS DEPARTMENT OF TRANSPORTATION	TYPICAL SECTION		F.A.S. RTE.	SECTION	COUNTY	TOTAL SHEETS	SHEET NO.
SHT. PLAN		DRAWN -	REVISED -		SCALE: _____	SHEET 1 OF 1 SHEETS	1615	Q331-2	SANGAMON	5	5
		CHECKED -	REVISED -		STA. _____ TO STA. _____						
		DATE -	REVISED -								
							CONTRACT NO. 72G14 <small>(ILLINOIS) FED. AID PROJECT</small>				