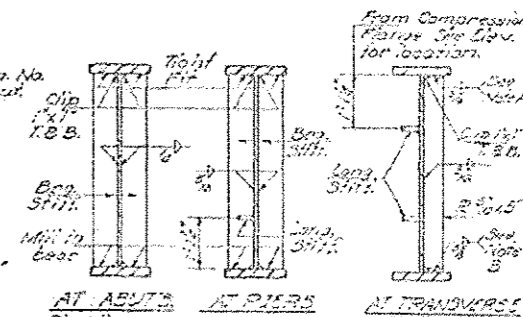
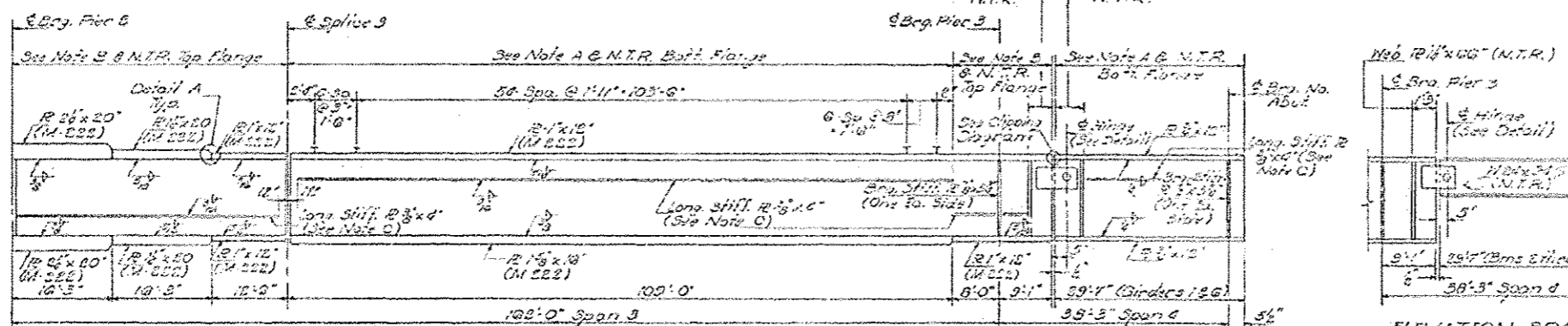
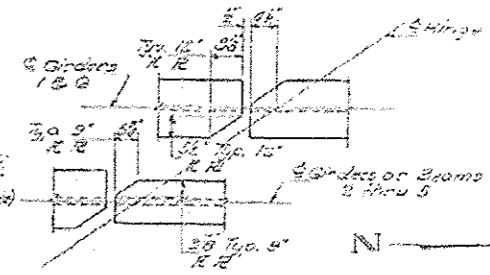
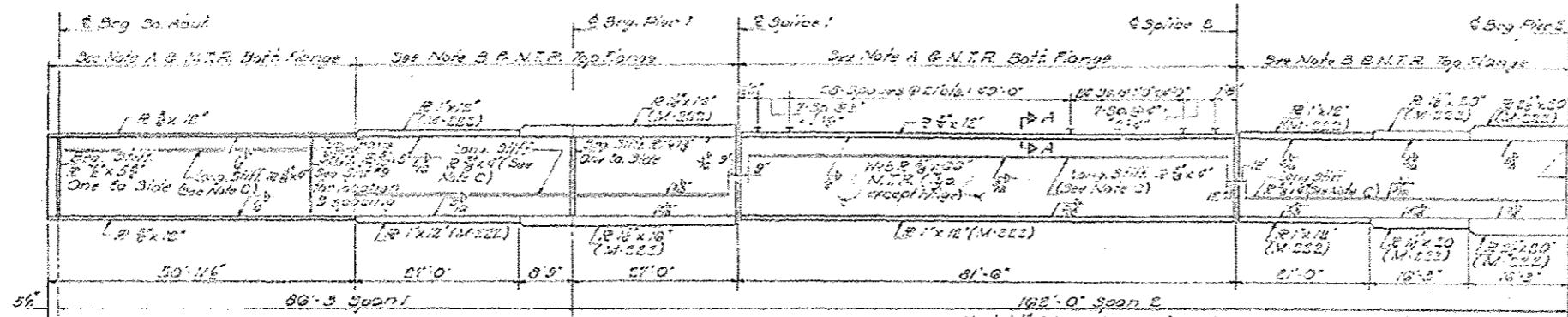


STATE OF ILLINOIS
DEPARTMENT OF TRANSPORTATION

DATE	BY	NO.	DATE	BY	NO.
11-2	Mallon	51	11-2		

SHEET NO. 10
21 SHEETS



NOTES

Note A: Transverse stiffeners in this area shall be welded to the top flange and 1/2" undercut bottom flange.

Note B: Transverse stiffeners in this area shall be welded to the bottom flange and 1/2" undercut top flange.

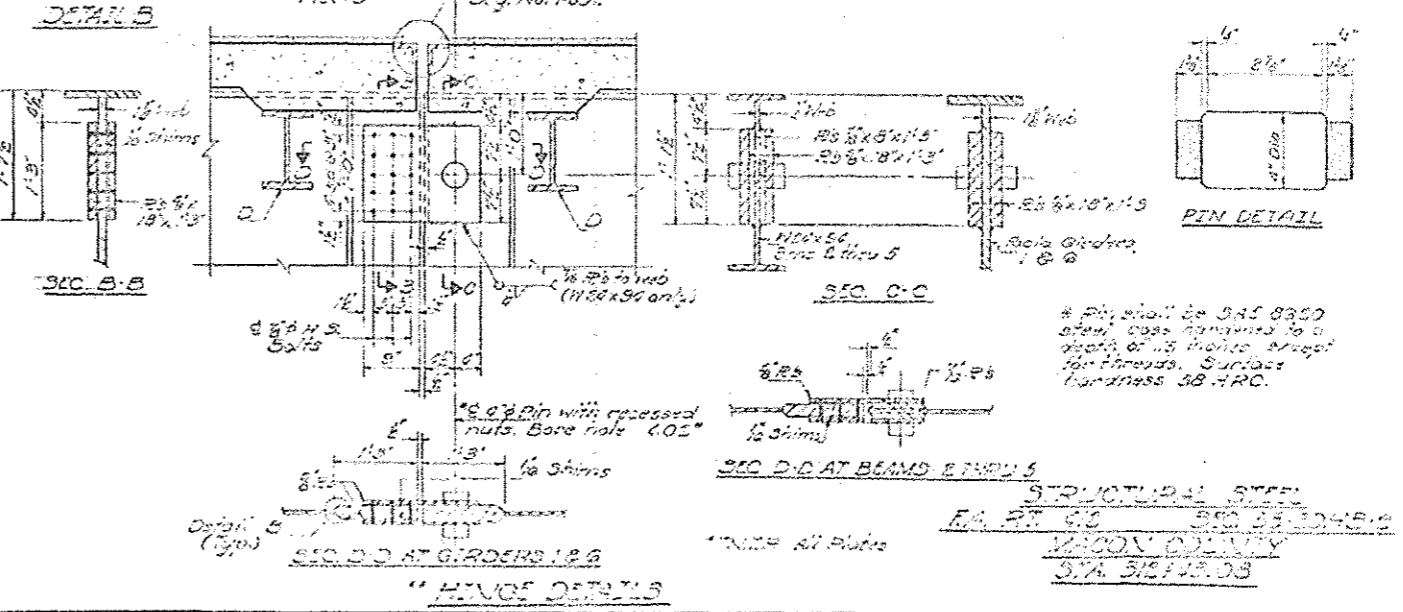
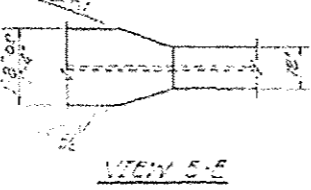
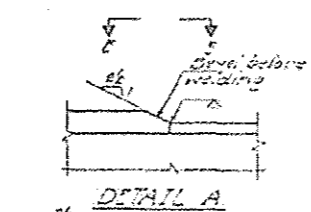
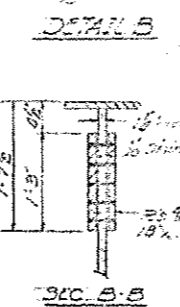
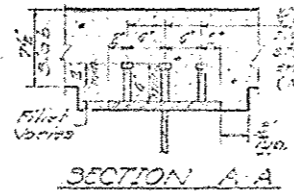
Note C: Longitudinal stiffeners are to be placed on the side of the web opposite the transverse stiffeners.

N.T.R. requires that the designated members conform to the supplemental requirements for notch toughness.

GIRDER ELEVATION
(At Structural Steel only, see M-89 except as noted)

ELEVATION - SPAN 6
(Showing Brms & Truss)

GIRDER CROSS SECTIONS



DESIGNED	EXAMINED
CHECKED	PASSED
DRAWN	APPROVED
CHECKED	