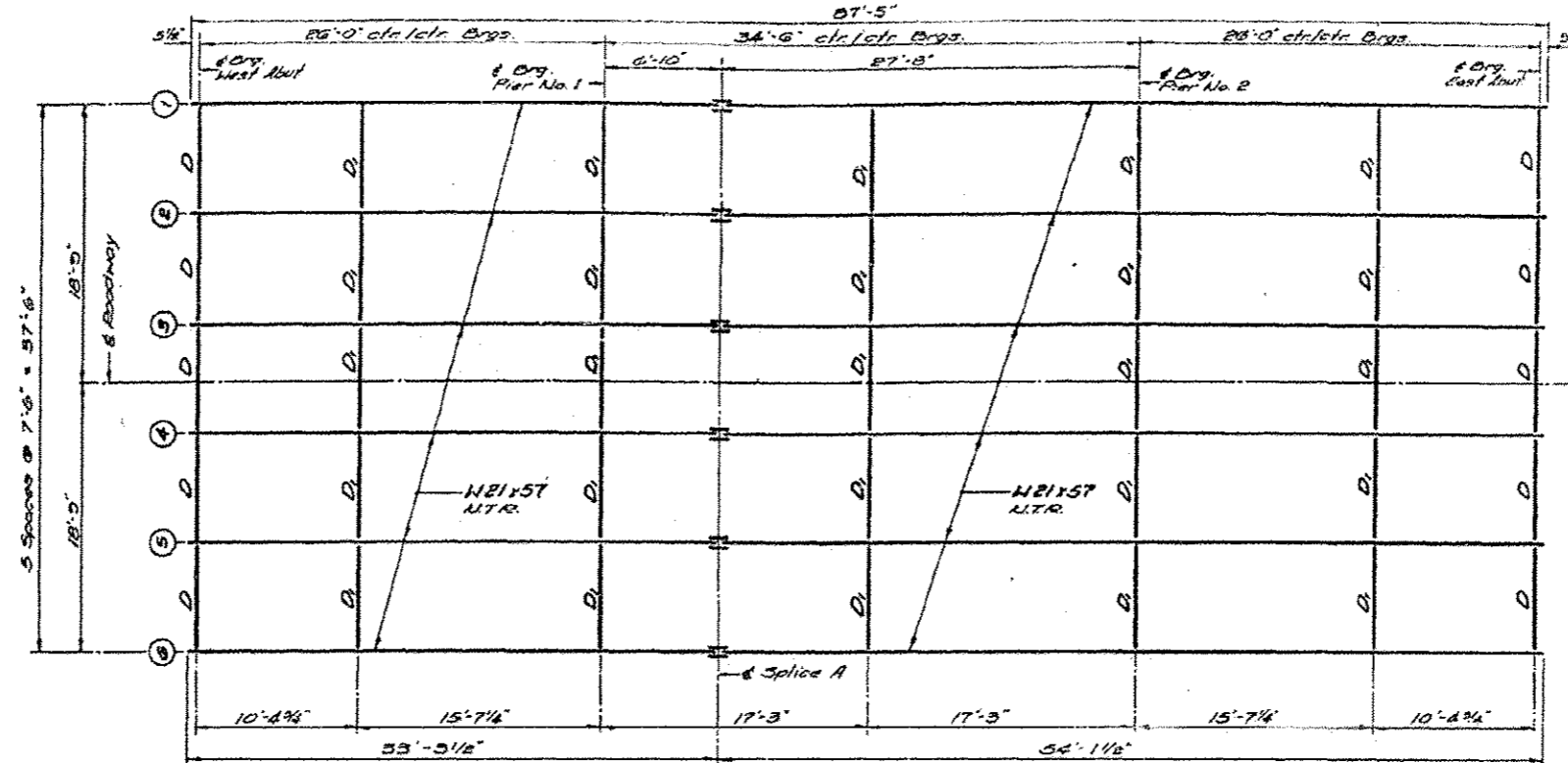


STATE OF ILLINOIS  
DEPARTMENT OF TRANSPORTATION

ROUTE NO.	SECTION	COUNTY	TOTAL SHEETS	SHEET NO.
FAP RYE	128 BR	MACON	30	18



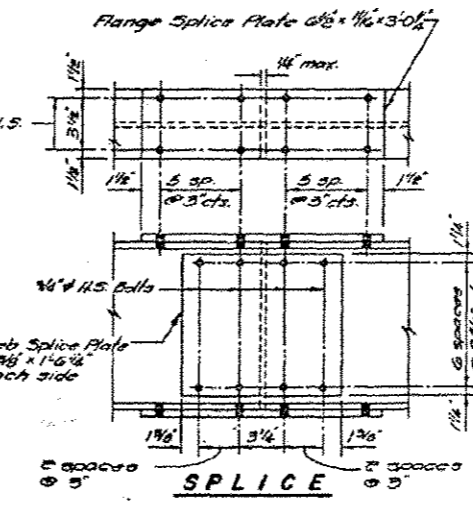
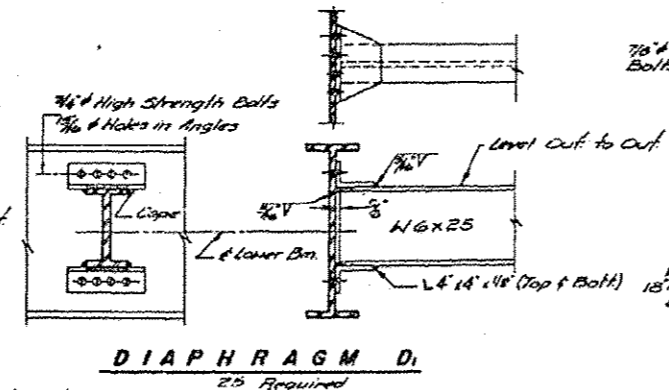
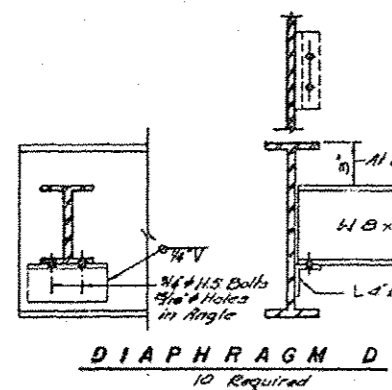
**INTERIOR BEAM MOMENT TABLE**

Location	04 Spacing	Pier #1	Pier #2	04 Spacing
Lo (k-ft)	1170	1170	1170	1170
Mo (k-ft)	1048	1048	1048	1048
M@ (k-ft)	45.3	45.3	45.3	45.3
Mma (k-ft)	106.4	106.3	106.2	106.2
Mlma (k-ft)	37.9	37.9	37.9	37.9
Mlma (k-ft)	259.6	259.3	259.3	259.3
Pa (kips)	22.66	22.66	22.66	22.66

**INTERIOR BEAM REACTION TABLE**

Location	Reactions	Pier
R@ (k)	9.77	35.21
R@ (k)	20.70	36.00
Mma (k)	25.00	19.20
Rlma (k)	23.57	35.21

**FRAMING PLAN**  
(NTR indicates Notch Toughness Requirements)



**Notes:**  
Prior to pouring deck slab contractor shall provide temporary hold down straps consisting of 2" x 1/2" galvanized metal strips at all abutment beam bearings. Secure straps with abutment bearing anchor bolts. Remove after deck slab has been poured.

**ELEVATIONS TOP OF WF BEAMS**  
(For Fabrication Only)

Location	Beam No. 119	Beam No. 113	Beam No. 115
Org. West Abutment	614.35	614.54	614.66
Org. Pier No. 1	614.25	614.35	614.51
Splice A	614.20	614.35	614.51
Org. Pier No. 2	614.13	614.27	614.45
Org. East Abutment	614.04	614.10	614.31

NOTE: Elevations tabulated above are to top of beam flange at all locations.

DESIGNED: D.H.G.  
CHECKED: K.L.F.  
DRAWN: J.M.B.  
CHECKED: K.L.F.

Notes: Hardened washers shall be required over 1/2" holes in angles.  
All contact surfaces of joints for the diaphragms at Abutments shall be free of paint or lacquer.

**STRUCTURAL STEEL**  
**FRAMING PLAN & DETAILS**  
FAP RYE, 714, SEC. 128 BR  
MACON COUNTY  
STATION 116+30