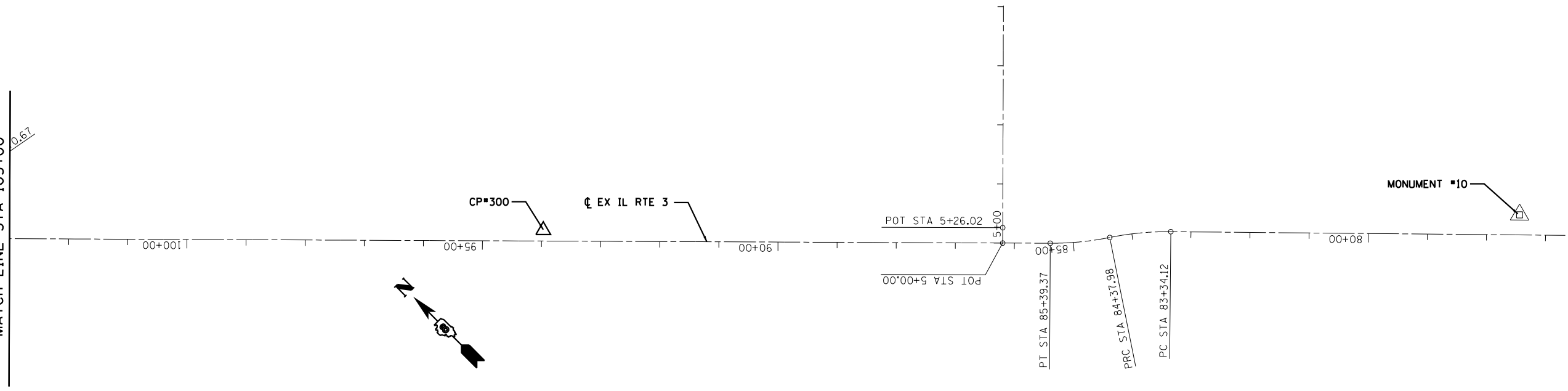
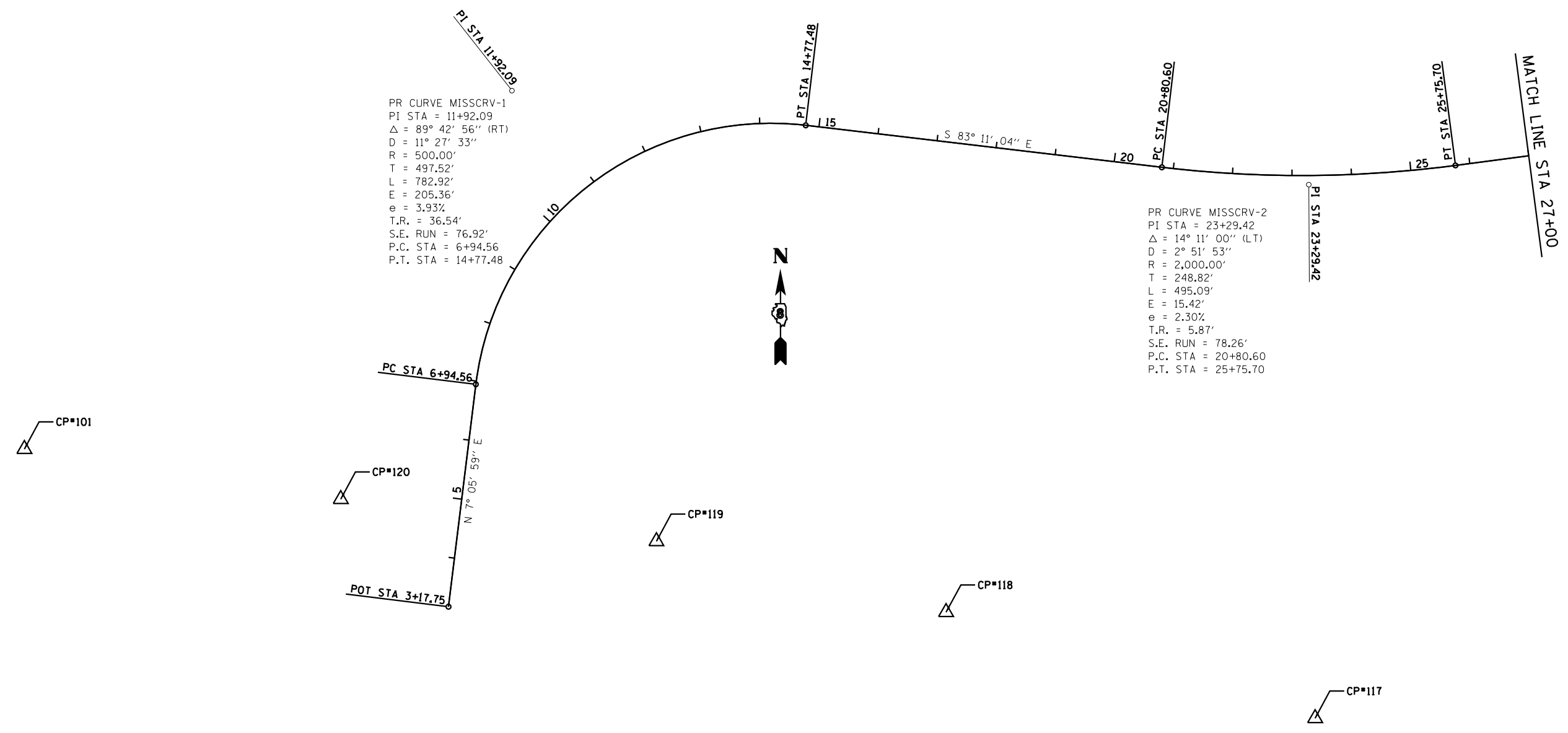


MATCH LINE STA 103+00



PR CURVE MISSCRV-1
 PI STA = 11+92.09
 $\Delta = 89^\circ 42' 56''$ (RT)
 $D = 11^\circ 27' 33''$
 $R = 500.00'$
 $T = 497.52'$
 $L = 782.92'$
 $E = 205.36'$
 $e = 3.93\%$
 $T.R. = 36.54'$
 $S.E. RUN = 76.92'$
 $P.C. STA = 6+94.56$
 $P.T. STA = 14+77.48$

PR CURVE MISSCRV-2
 PI STA = 23+29.42
 $\Delta = 14^\circ 11' 00''$ (LT)
 $D = 2^\circ 51' 53''$
 $R = 2,000.00'$
 $T = 248.82'$
 $L = 495.09'$
 $E = 15.42'$
 $e = 2.30\%$
 $T.R. = 5.87'$
 $S.E. RUN = 78.26'$
 $P.C. STA = 20+80.60$
 $P.T. STA = 25+75.70$



FILE NAME =	USER NAME = dmeyer	DESIGNED - JJO	REVISED -
P:\IDOT-DB\2010\010134.27 IL3 Final Plans\Contract 76848\Dgn\0876848-shr-ATB.dgn		DRAWN - JJO	REVISED -
		CHECKED - PJM	REVISED -
		DATE - 10/18/12	REVISED -

**STATE OF ILLINOIS
 DEPARTMENT OF TRANSPORTATION**

ALIGNMENTS, TIES, AND BENCHMARKS			
SCALE:	SHEET NO.	OF SHEETS	STA. 3+17 TO STA. 27+00

F.A.P. RTE.	SECTION	COUNTY	TOTAL SHEETS	SHEET NO.
788	520-1-2HVB, 520-1-2HVB-1	ST. CLAIR	237	22
CONTRACT NO. 76848				
ILLINOIS FED. AID PROJECT				