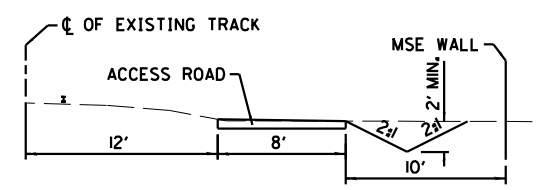
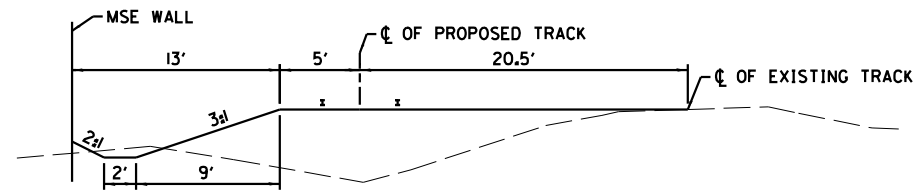


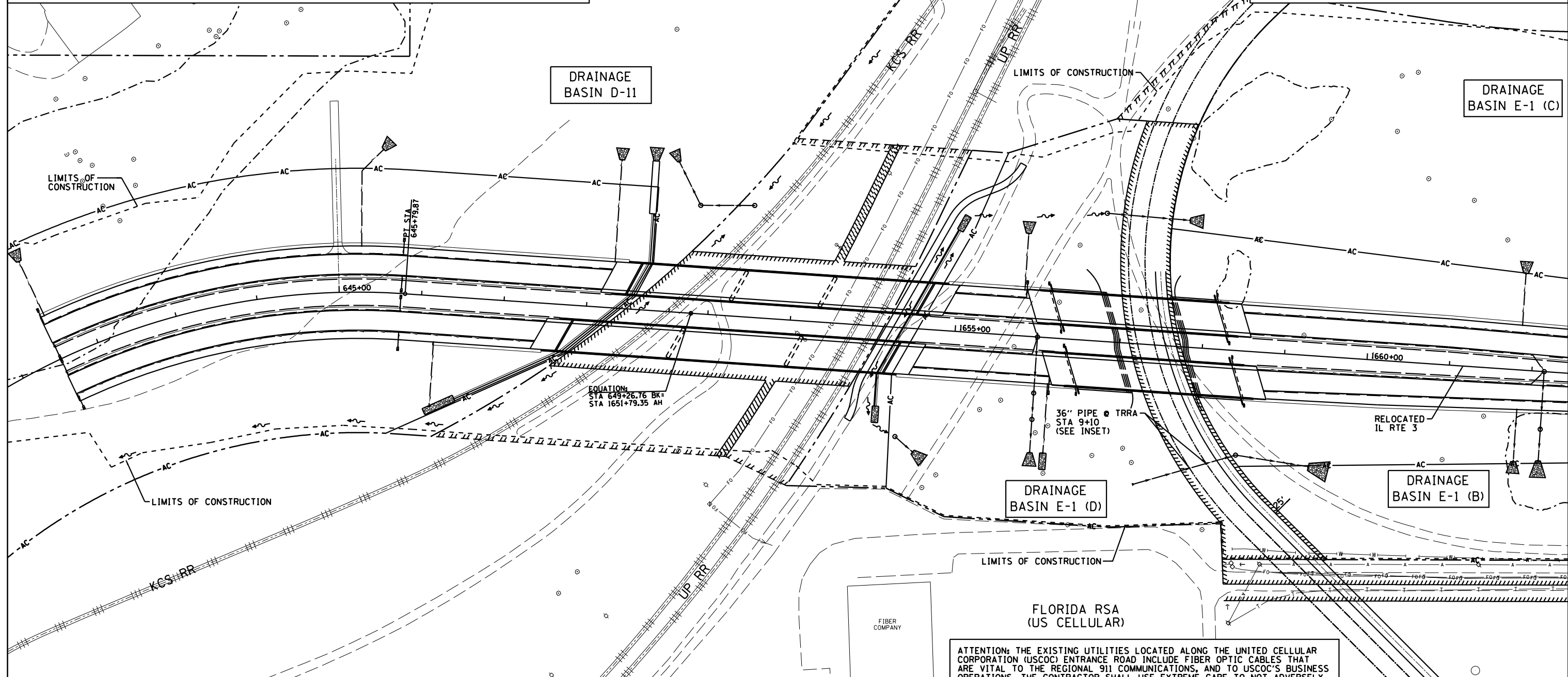
KCS TYPICAL SECTION FOR DITCH BETWEEN FUTURE TRACK AND S. ABUTMENT

UPRR TYPICAL SECTION FOR DITCH BETWEEN ACCESS ROAD AND N. ABUTMENT



NOT TO SCALE

NOT TO SCALE



DRAINAGE BASIN D-11

DRAINAGE BASIN E-1 (C)

DRAINAGE BASIN E-1 (D)

DRAINAGE BASIN E-1 (B)

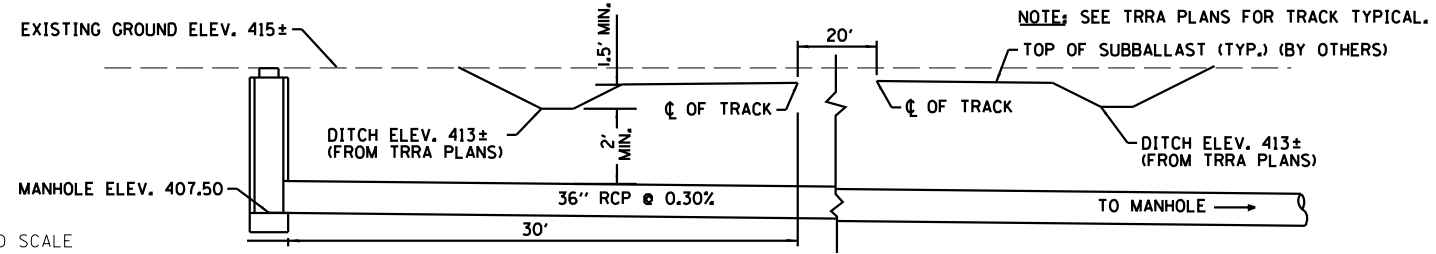
EQUATION:  
STA 649+26.76 BK+  
STA 1651+79.35 AH

36" PIPE @ TRRA  
STA 9+10  
(SEE INSET)

FLORIDA RSA  
(US CELLULAR)

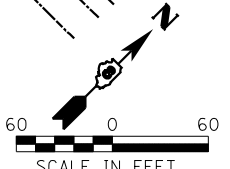
ATTENTION: THE EXISTING UTILITIES LOCATED ALONG THE UNITED CELLULAR CORPORATION (USCOC) ENTRANCE ROAD INCLUDE FIBER OPTIC CABLES THAT ARE VITAL TO THE REGIONAL 911 COMMUNICATIONS, AND TO USCOC'S BUSINESS OPERATIONS. THE CONTRACTOR SHALL USE EXTREME CARE TO NOT ADVERSELY IMPACT USCOC FACILITIES.

TRRA SECTION AT PIPE CULVERT



NOTE: SEE TRRA PLANS FOR TRACK TYPICAL.  
TOP OF SUBBALLAST (TYP.) (BY OTHERS)

NOT TO SCALE



**Farnsworth GROUP, INC.**  
2709 McGraw Drive  
Bloomington, Illinois 61704  
309/663-8435, 309/663-1571 fax

USER NAME = dmeyer  
PLOT SCALE = 1/200000' / 1" = 1000'  
PLOT DATE = 3/15/2013

DESIGNED - JJO  
DRAWN - JJO  
CHECKED - PJM  
DATE - 12/10/12

REVISED - 02/06/13  
REVISED - 03/15/13  
REVISED -  
REVISED -

**STATE OF ILLINOIS  
DEPARTMENT OF TRANSPORTATION**

**RAILROAD DITCH FLOW ANALYSIS**

SCALE: 1"=60' SHEET NO. OF SHEETS STA. TO STA.

F.A.P. RTE.	SECTION	COUNTY	TOTAL SHEETS	SHEET NO.
788	520-1-2HVB, 520-1-2HVB-1	ST. CLAIR	237	35

CONTRACT NO. 76848

ILLINOIS FED. AID PROJECT