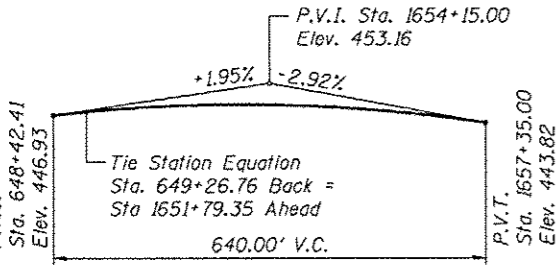
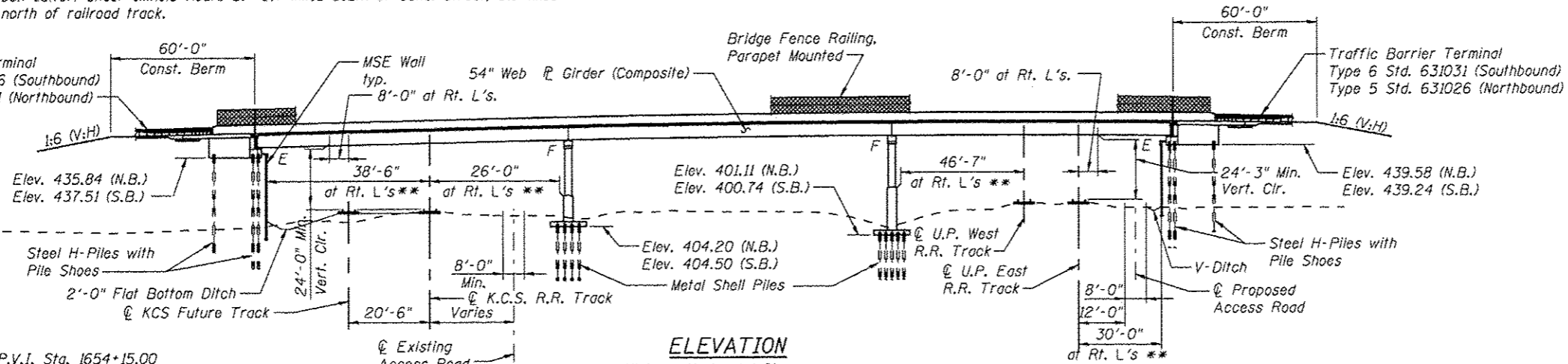


Bench Mark: MRC Horizontal/Vertical Control Monument No. 8 (Elevation 401.95) Aluminum disc set in the south end of a headwall to a box culvert under Illinois Route 3: 0.7 miles south of Canal Street; 0.1 miles south of Industrial Drive and north of railroad track.

Existing Structure: None

Traffic Barrier Terminal
Type 5 Std. 631026 (Southbound)
Type 6 Std. 631031 (Northbound)

Approximate Existing Groundline



DESIGN SPECIFICATIONS

AASHTO LRFD Bridge Design Specifications,
Customary U.S. Units, 5th Edition (Bridge)
2002 AASHTO (MSE Wall)

SEISMIC DATA

Seismic Performance Zone (SPZ) = 3
Design Spectral Acc. at 1.0 sec (S_{D1}) = 0.35g
Design Spectral Acc. at 0.2 sec (S_{D5}) = 0.77g
Soil Site Class E

LOADING HL-93

Allow 50#/sq. ft. for future wearing surface.

DESIGN STRESSES

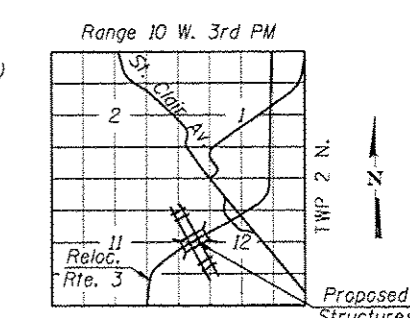
f'_c = 3,500 psi (Field Units)
 f'_c = 4,500 psi (Precast Panels)
 f_y = 60,000 psi (Reinforcement)
 f_y = 50,000 psi (M270 Grade 50)
 f_y = 36,000 psi (M270 Grade 36)

STATION 648+98.83
BUILT 201 BY
STATE OF ILLINOIS
F.A.P. ROUTE 788 SEC. 520-1-2HVB
LOADING HL-93
STRUCTURE NO. 082-0334

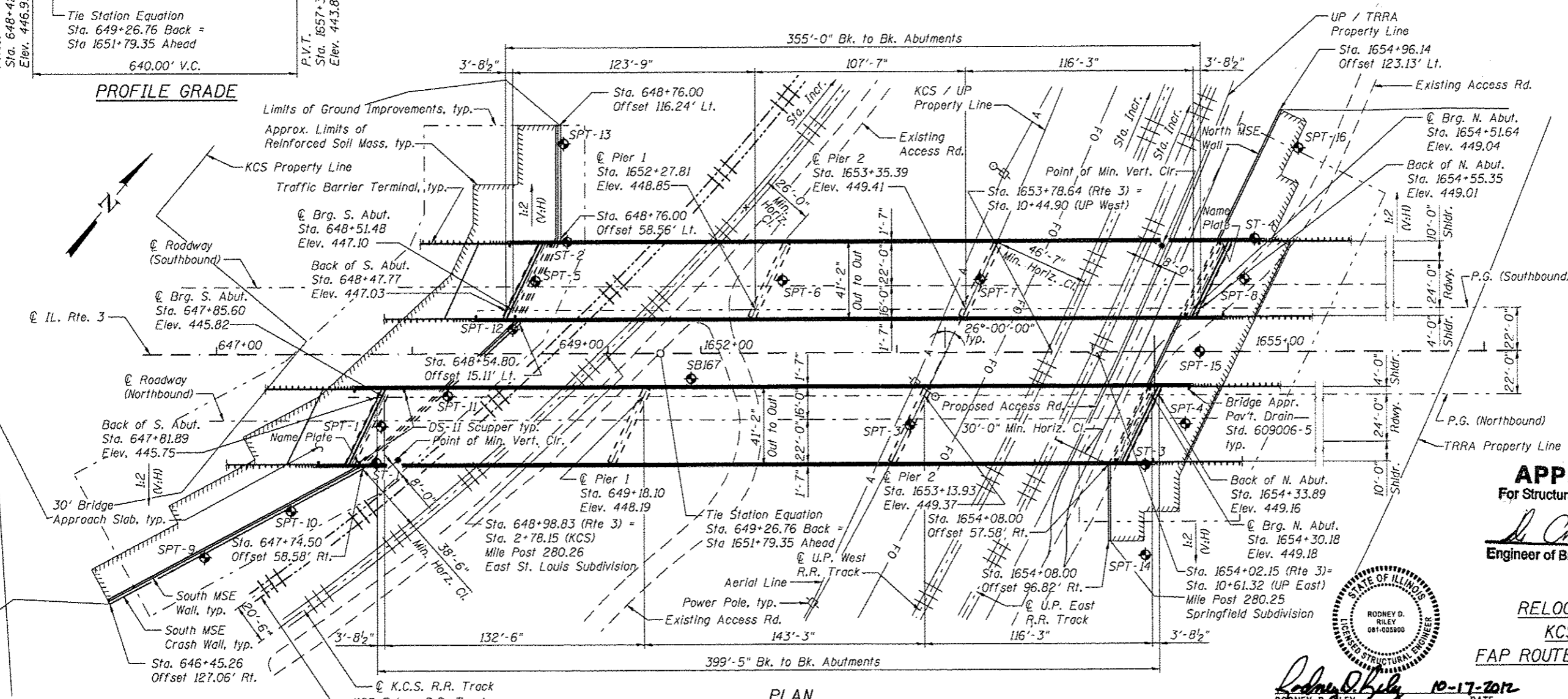
NAME PLATE - N.B.
See Std. 515001

STATION 648+98.83
BUILT 201 BY
STATE OF ILLINOIS
F.A.P. ROUTE 788 SEC. 520-1-2HVB
LOADING HL-93
STRUCTURE NO. 082-0335

NAME PLATE - S.B.
See Std. 515001



25-JAN-2013 10:41 P:\CIX31000\T00cadd\T09str\FINAL PLANS\0820334-76848-001-Plan & Elev.dgn



Note: Wall offsets are measured from the @ IL. Rte. 3 to the front face of precast panels (North Wall) or crash wall (South Wall).

APPROVED
For Structural Adequacy Only

Carl P. Riley
Engineer of Bridges & Structures



GENERAL PLAN
RELOCATED IL ROUTE 3 OVER
KCS AND UP RAILROADS
FAP ROUTE 788 - SECTION 520-1-2HVB
ST. CLAIR COUNTY
STATION 648+98.83
STRUCTURE NO. 082-0334 (NB)
STRUCTURE NO. 082-0335 (SB)

Indicates location of Soil Boring.

JACOBS	USER NAME =	DESIGNED - D. HOWELL	REVISED -	STATE OF ILLINOIS DEPARTMENT OF TRANSPORTATION	GENERAL PLAN & ELEVATION STRUCTURE NO. 082-0334 (N.B.) & 082-0335 (S.B.)	F.A.P. RTE.	SECTION	COUNTY	TOTAL SHEET NO.
	PLOT DATE = 25-JAN-2013	CHECKED - R. RILEY	REVISED -			788	520-1-2HVB	ST. CLAIR	237
FILE NAME = 0820334-76848-001-Plan & Elev.dgn	DRAWN - C. SALLADE	REVISED -		SHEET NO. C1 OF 76 SHEETS		CONTRACT NO. 76848		ILLINOIS FED. AID PROJECT	