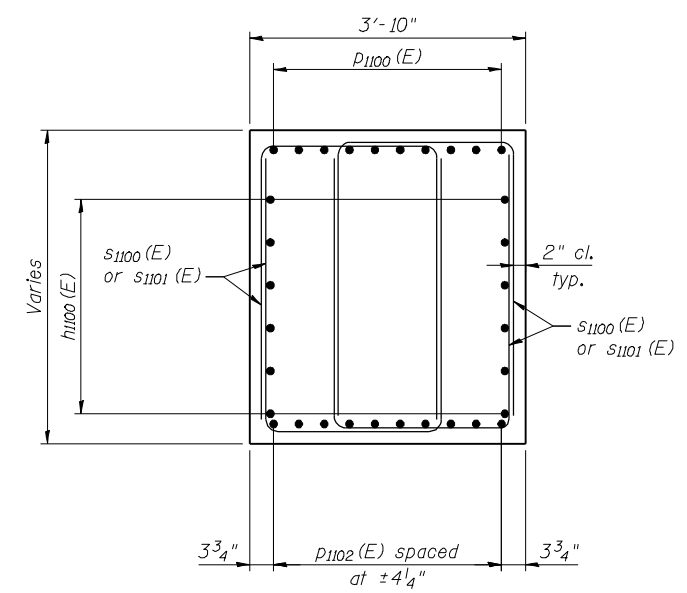
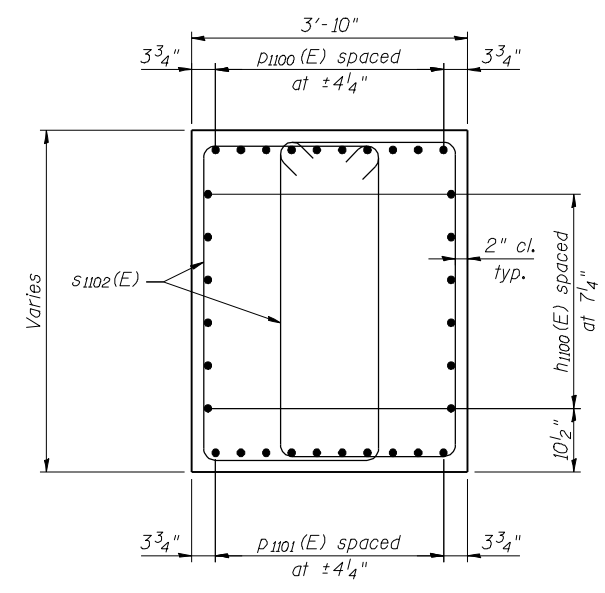


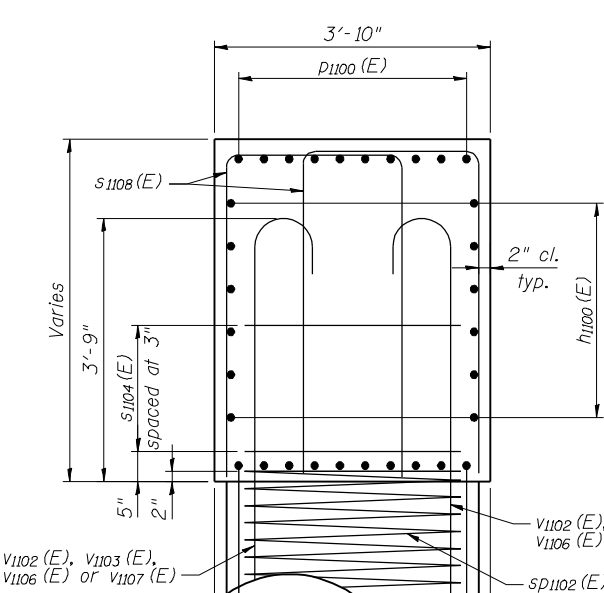
17-OCT-2012 16:34 P:\CX31000\T00cadd\T095tr\FINAL\_PLANS\0820335-76848-049-Pier\_Details(SB).dgn



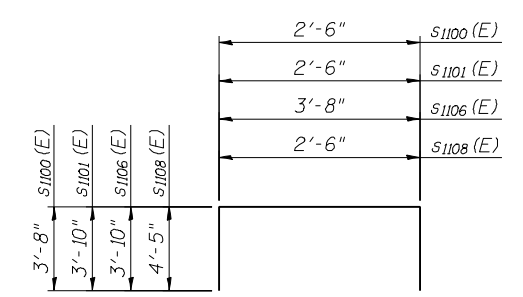
SECTION A-A



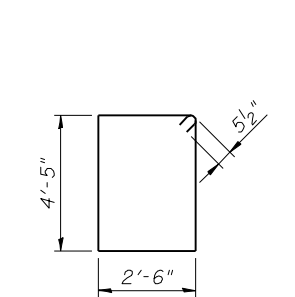
SECTION B-B



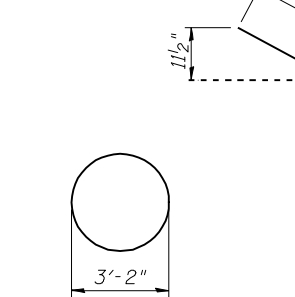
SECTION C-C



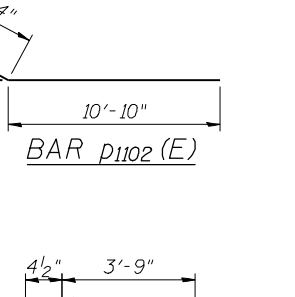
BAR s1100(E), s1101(E), s1106(E) & s1108(E)



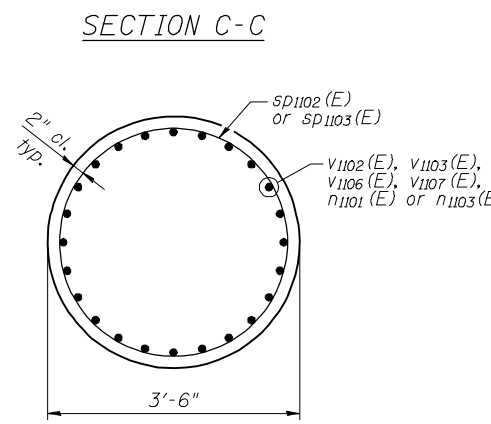
BAR s1102(E)



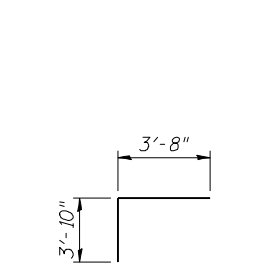
BAR s1104(E)



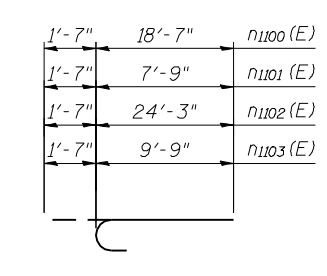
BAR s1104(E)



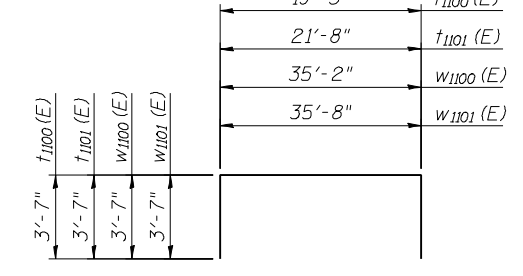
SECTION D-D



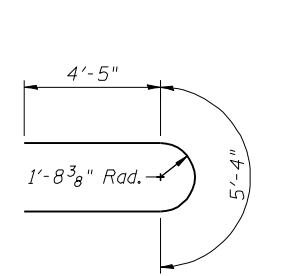
BAR s1107(E)



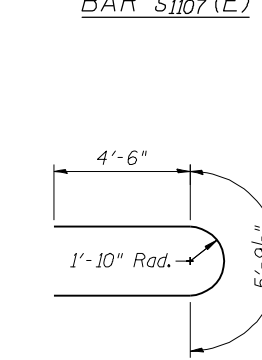
BAR n1100(E), n1101(E), n1102(E) & n1103(E)



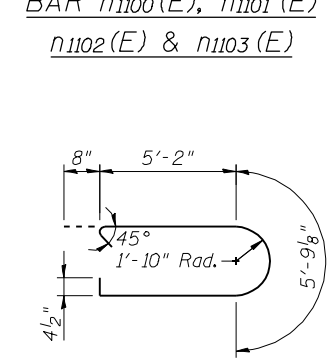
BAR t1100(E), t1101(E), w1100(E) & w1101(E)



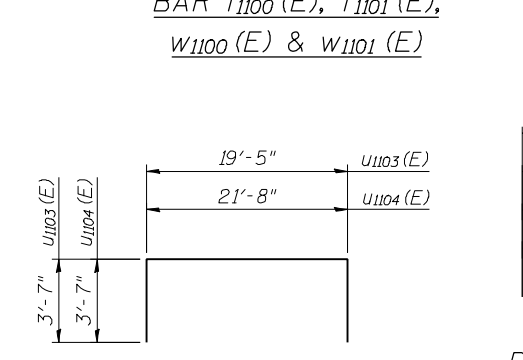
BAR u1100(E)



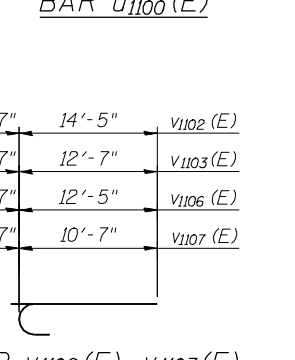
BAR u1101(E)



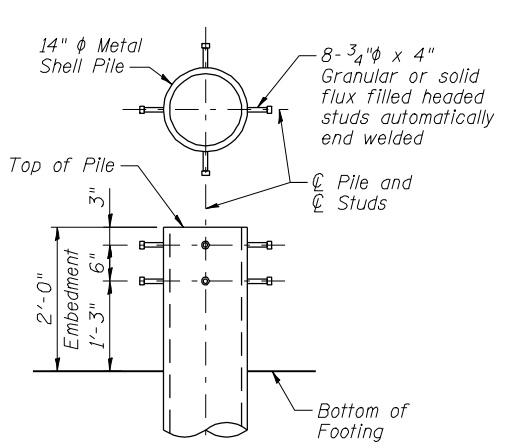
BARS u1102(E)



BAR u1103(E) & u1104(E)

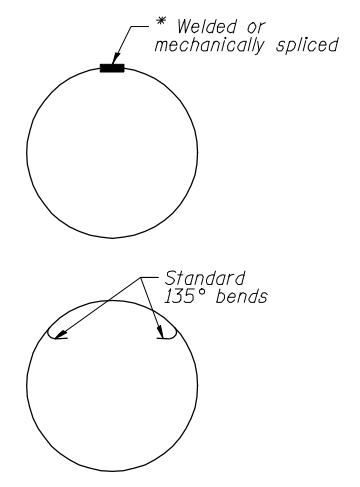


BAR v1102(E), v1103(E), v1106(E) & v1107(E)

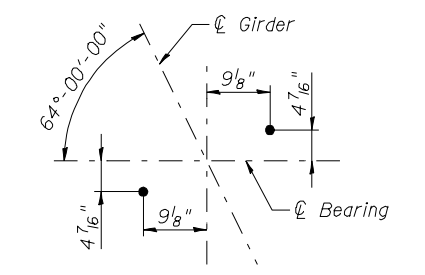


SEISMIC PILE DETAIL

Cast of 3/4"  $\phi$  studs shall be included in item "Furnishing Steel Piles".



SEISMIC HOOP  
\* Shop welded per AWS D1.4.



ANCHOR BOLT LAYOUT

PIER 1 S.B.  
BILL OF MATERIAL

Bar	No.	Size	Length	Shape
h1100(E)	12	#6	40'-2"	—
h1101(E)	16	#6	19'-0"	—
h1102(E)	22	#6	28'-0"	—
h1103(E)	6	#7	35'-2"	—
n1100(E)	132	#11	20'-2"	—
n1101(E)	36	#11	9'-4"	—
n1102(E)	132	#11	25'-10"	—
n1103(E)	36	#11	11'-4"	—
p1100(E)	10	#10	40'-2"	—
p1101(E)	10	#10	31'-0"	—
p1102(E)	20	#10	17'-2"	—
s1100(E)	24	#5	9'-10"	□
s1101(E)	64	#5	10'-2"	□
s1102(E)	56	#5	14'-9"	□
s1104(E)	24	#4	11'-10"	○
s1105(E)	208	#4	4'-6"	┌
s1106(E)	40	#6	11'-4"	┌
s1107(E)	34	#6	7'-6"	┌
s1108(E)	20	#5	11'-4"	┌
sp1102(E)	3	#4	16'-7"	⋈
t1100(E)	124	#9	26'-7"	┌
u1100(E)	14	#6	14'-2"	┌
u1101(E)	16	#6	14'-9"	┌
u1102(E)	22	#6	17'-2"	┌
u1103(E)	6	#7	26'-7"	┌
v1102(E)	36	#11	16'-0"	┌
v1106(E)	36	#11	14'-0"	┌
w1100(E)	48	#7	42'-4"	┌
Structure Excavation		Cu. Yd.	310.0	
Concrete Structures		Cu. Yd.	215.4	
Reinforcement Bars, Epoxy Coated		Pound	53,080	
Furnishing - Piles, 14" $\phi$ Shell		Foot	2170.0	
Driving Piles		Foot	2170.0	
Test Pile, 14" $\phi$ Shell		Each	1	

\*\* Length is height of spiral.

PIER 2 S.B.  
BILL OF MATERIAL

Bar	No.	Size	Length	Shape
h1100(E)	12	#6	40'-2"	—
h1101(E)	16	#6	19'-0"	—
h1102(E)	34	#6	28'-0"	—
h1104(E)	6	#7	35'-8"	—
n1101(E)	36	#11	9'-4"	—
n1102(E)	132	#11	25'-10"	—
n1103(E)	36	#11	11'-4"	—
p1100(E)	10	#10	40'-2"	—
p1101(E)	10	#10	31'-0"	—
p1102(E)	20	#10	17'-2"	—
s1100(E)	24	#5	9'-10"	□
s1101(E)	64	#5	10'-2"	□
s1102(E)	56	#5	14'-9"	□
s1104(E)	24	#4	11'-10"	○
s1105(E)	256	#4	4'-6"	┌
s1106(E)	40	#6	11'-4"	┌
s1107(E)	34	#6	7'-6"	┌
s1108(E)	20	#5	11'-4"	┌
sp1103(E)	3	#4	14'-9"	⋈
t1101(E)	124	#9	28'-10"	┌
u1100(E)	14	#6	14'-2"	┌
u1101(E)	16	#6	14'-9"	┌
u1102(E)	34	#6	17'-2"	┌
u1104(E)	6	#7	28'-10"	┌
v1103(E)	36	#11	14'-2"	┌
v1107(E)	36	#11	12'-2"	┌
w1101(E)	52	#7	42'-10"	┌
Structure Excavation		Cu. Yd.	354.9	
Concrete Structures		Cu. Yd.	253.9	
Reinforcement Bars, Epoxy Coated		Pound	58,550	
Furnishing - Piles, 14" $\phi$ Shell		Foot	2860.0	
Driving Piles		Foot	2860.0	
Test Pile, 14" $\phi$ Shell		Each	1	

\*\* Length is height of spiral.



USER NAME =	DESIGNED - N. KHATRI	REVISED -
PLOT DATE = 17-OCT-2012	CHECKED - R. RILEY	REVISED -
	DRAWN - E. KRACK	REVISED -
	CHECKED - J. SMITH	REVISED -

STATE OF ILLINOIS  
DEPARTMENT OF TRANSPORTATION

PIER DETAILS (S.B.)  
STRUCTURE NO. 082-0334 (N.B.) & 082-0335 (S.B.)

SHEET NO. C49 OF 76 SHEETS

F.A.P. RTE.	SECTION	COUNTY	TOTAL SHEETS	SHEET NO.
788	520-1-2HVB	ST. CLAIR	237	106
CONTRACT NO. 76848				
ILLINOIS FED. AID PROJECT				

FILE NAME = 0820335-76848-049-Pier\_Details(SB).dgn