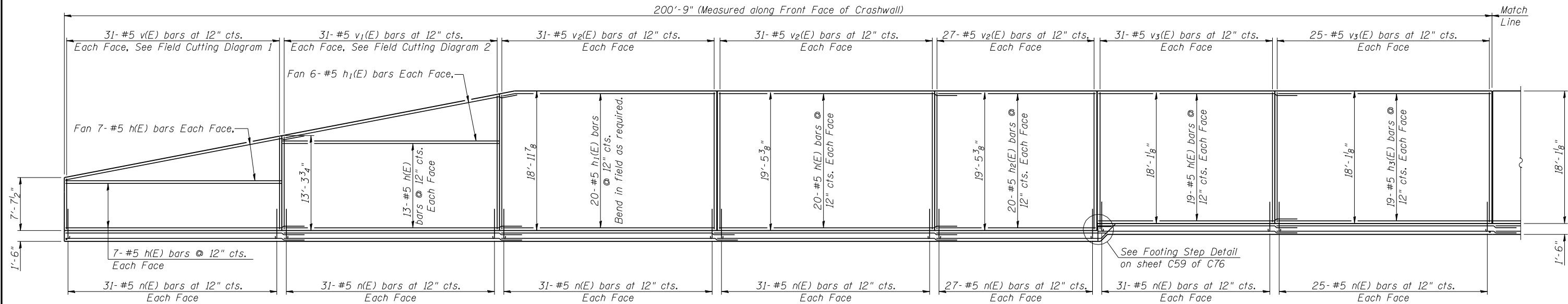
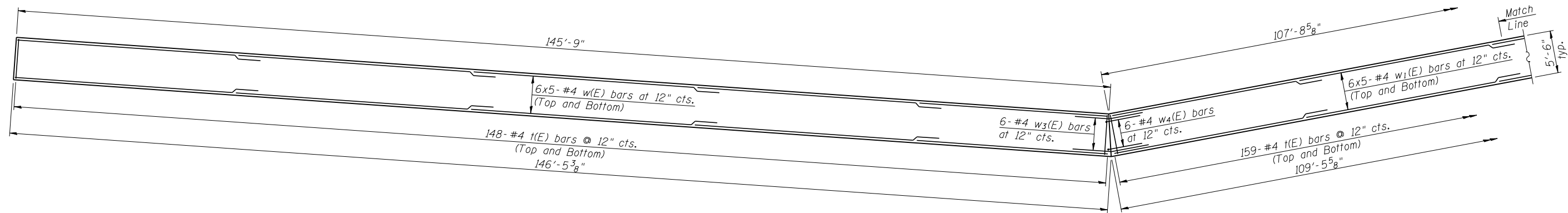


PLAN

200'-9" (Measured along Front Face of Crashwall)



ELEVATION



FOOTING

Note:
 Bars indicated thus 6x5-#4, etc., indicates
 6 lines of bars with 5 lengths of #5 bars per line.
 See sheet C59 of 76 for joint details, bar bends,
 cutting diagrams, step details, bar list and bill of material.

MIN. BAR LAP

#4 Bars = 1'-8"
 #5 Bars = 2'-2"

(Sheet 1 of 2)



USER NAME =	DESIGNED - PSS	REVISED -
FILE NAME =	CHECKED - KHH	REVISED -
PLOT SCALE =	DRAWN - AJF	REVISED -
PLOT DATE =	CHECKED - KHH	REVISED -

**STATE OF ILLINOIS
 DEPARTMENT OF TRANSPORTATION**

**SOUTH MSE WALL - CRASHWALL
 STRUCTURE NO. 082-0334 (N.B.) & 082-0335 (S.B.)**

SHEET NO. C57 OF 76 SHEETS

F.A.P. RTE.	SECTION	COUNTY	TOTAL SHEETS	SHEET NO.
788	520-1-2HVB	ST. CLAIR	237	114
CONTRACT NO. 76848			ILLINOIS FED. AID PROJECT	