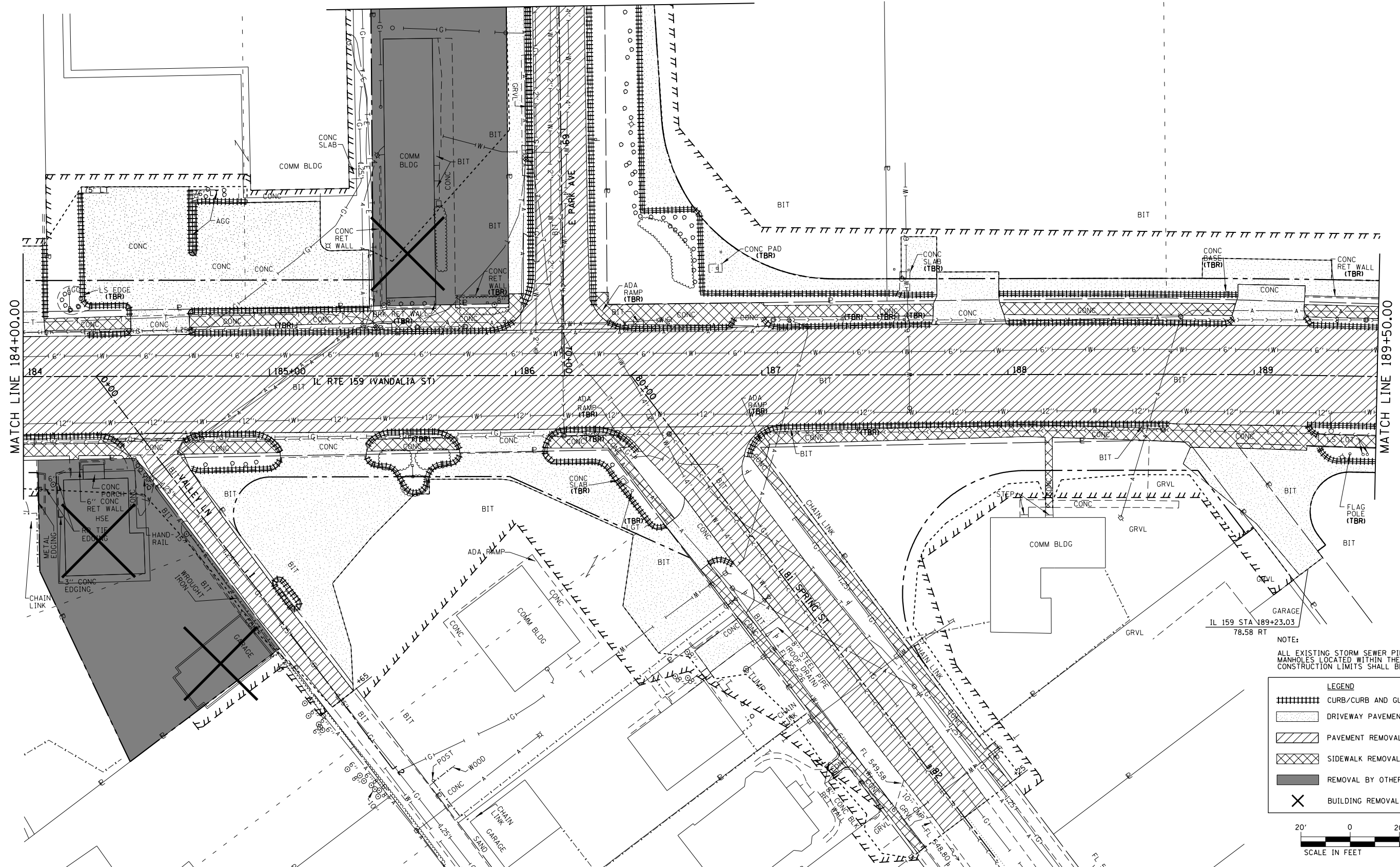
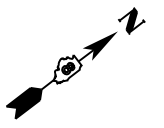
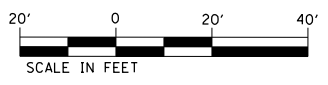


MATCH LINE STA. 68+50.00  
(SEE SHEET 81)



NOTE:  
ALL EXISTING STORM SEWER PIPE, INLETS AND MANHOLES LOCATED WITHIN THE PROJECT CONSTRUCTION LIMITS SHALL BE REMOVED.

LEGEND	
	CURB/CURB AND GUTTER REMOVAL
	DRIVEWAY PAVEMENT REMOVAL
	PAVEMENT REMOVAL
	SIDEWALK REMOVAL
	REMOVAL BY OTHERS
	BUILDING REMOVAL BY OTHERS



FILE NAME =	USER NAME = default	DESIGNED - AGF	REVISED -
P:\Projects\513501\CADD\DN\0876885-shr\removal.dgn		DRAWN - AGF	REVISED -
		CHECKED - CLS	REVISED -
		DATE - 01/25/2013	REVISED -

**STATE OF ILLINOIS  
DEPARTMENT OF TRANSPORTATION**

**REMOVAL PLAN  
IL ROUTE 159**

SCALE: 1" = 20'    SHEET NO. 5 OF 16 SHEETS    STA. 184+00.00 TO STA. 189+50.00

F.A.P. RTE.	SECTION	COUNTY	TOTAL SHEETS	SHEET NO.
600	60-(30,31,128)-3	MADISON	529	70
CONTRACT NO. 76885				
ILLINOIS FED. AID PROJECT				