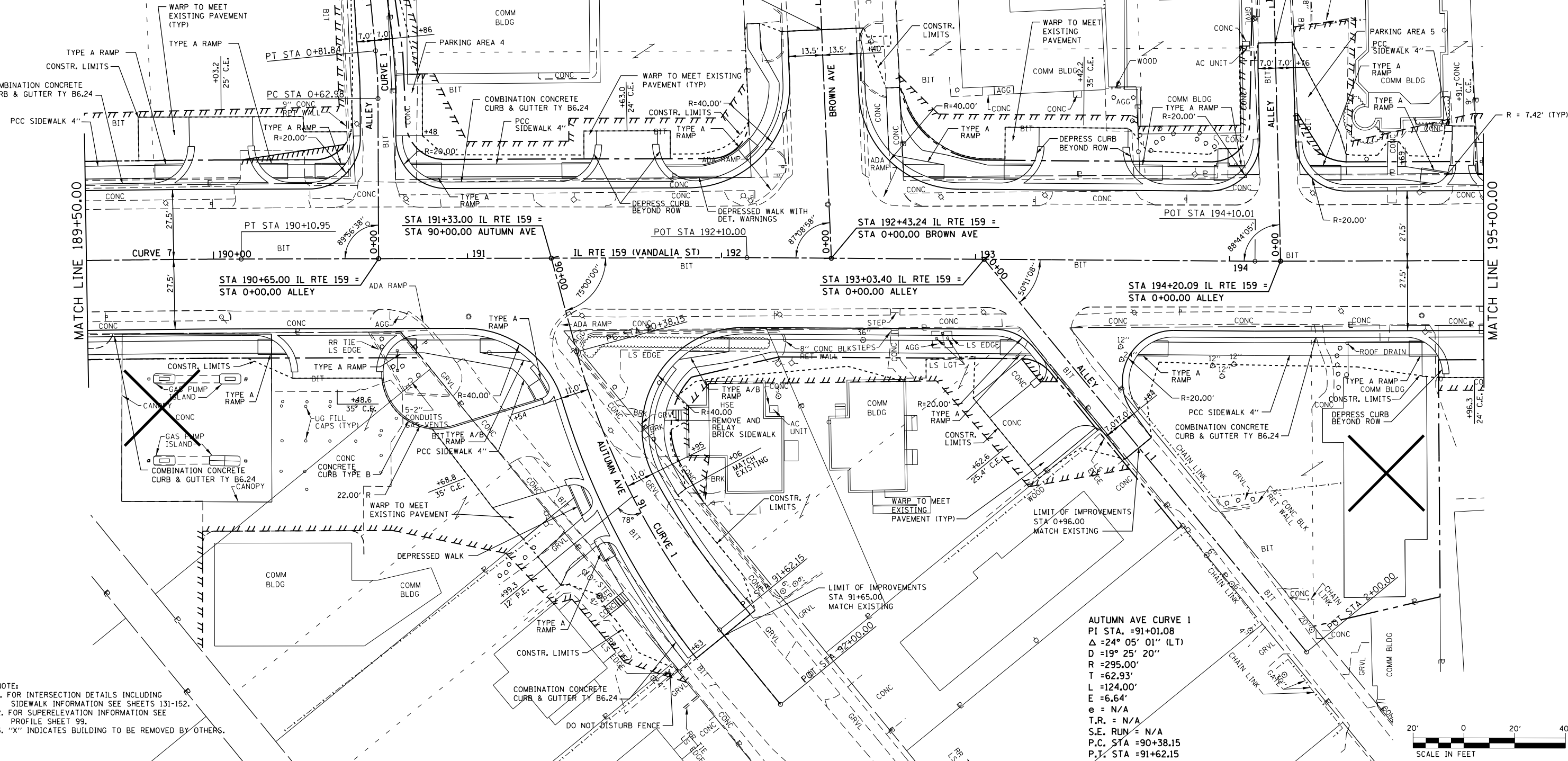
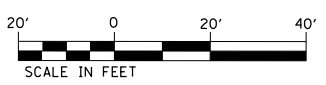


ALLEY 190+65.00 CURVE 1
 PI STA. =0+72.42
 $\Delta = 5^\circ 24' 10''$ (LT)
 $D = 28^\circ 38' 52''$
 $R = 200.00'$
 $T = 9.44'$
 $L = 18.86'$
 $E = 0.22'$
 $e = N/A$
 $T.R. = N/A$
 $S.E. RUN = N/A$
 $P.C. STA = 0+62.98$
 $P.T. STA = 0+81.84$



NOTE:
 1. FOR INTERSECTION DETAILS INCLUDING SIDEWALK INFORMATION SEE SHEETS 131-152.
 2. FOR SUPERELEVATION INFORMATION SEE PROFILE SHEET 99.
 3. "X" INDICATES BUILDING TO BE REMOVED BY OTHERS.

AUTUMN AVE CURVE 1
 PI STA. =91+01.08
 $\Delta = 24^\circ 05' 01''$ (LT)
 $D = 19^\circ 25' 20''$
 $R = 295.00'$
 $T = 62.93'$
 $L = 124.00'$
 $E = 6.64'$
 $e = N/A$
 $T.R. = N/A$
 $S.E. RUN = N/A$
 $P.C. STA = 90+38.15$
 $P.T. STA = 91+62.15$



FILE NAME =	USER NAME = default	DESIGNED - AGF	REVISED -	STATE OF ILLINOIS DEPARTMENT OF TRANSPORTATION	PLAN IL ROUTE 159	F.A.P. RTE. =	SECTION	COUNTY	TOTAL SHEETS	SHEET NO.	
P:\Projects\513501\CADD\DN\0876885-sh1p1npr.f.dgn		DRAWN - AGF	REVISED -			600	60-(30,31,128)-3	MADISON	529	98	
PLOT SCALE = 48.0000' / in.		CHECKED - CLS	REVISED -			CONTRACT NO. 76885					
PLOT DATE = 1/25/2013		DATE - 01/25/2013	REVISED -			ILLINOIS FED. AID PROJECT					

SCALE: 1" = 20' SHEET NO. 11 OF 43 SHEETS STA. 189+50.00 TO STA. 195+00.00