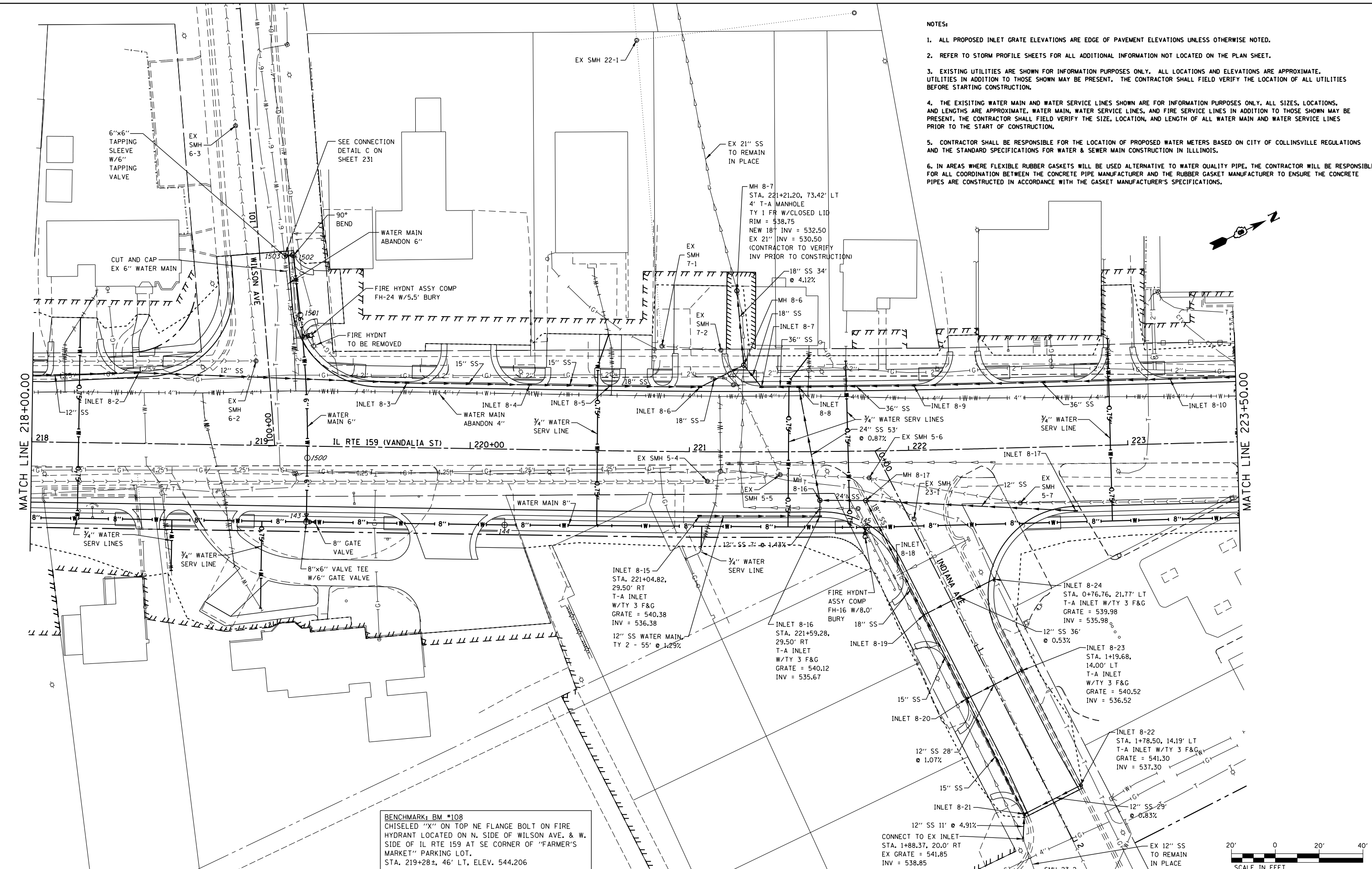


**NOTES:**

1. ALL PROPOSED INLET GRATE ELEVATIONS ARE EDGE OF PAVEMENT ELEVATIONS UNLESS OTHERWISE NOTED.
2. REFER TO STORM PROFILE SHEETS FOR ALL ADDITIONAL INFORMATION NOT LOCATED ON THE PLAN SHEET.
3. EXISTING UTILITIES ARE SHOWN FOR INFORMATION PURPOSES ONLY. ALL LOCATIONS AND ELEVATIONS ARE APPROXIMATE. UTILITIES IN ADDITION TO THOSE SHOWN MAY BE PRESENT. THE CONTRACTOR SHALL FIELD VERIFY THE LOCATION OF ALL UTILITIES BEFORE STARTING CONSTRUCTION.
4. THE EXISTING WATER MAIN AND WATER SERVICE LINES SHOWN ARE FOR INFORMATION PURPOSES ONLY. ALL SIZES, LOCATIONS, AND LENGTHS ARE APPROXIMATE. WATER MAIN, WATER SERVICE LINES, AND FIRE SERVICE LINES IN ADDITION TO THOSE SHOWN MAY BE PRESENT. THE CONTRACTOR SHALL FIELD VERIFY THE SIZE, LOCATION, AND LENGTH OF ALL WATER MAIN AND WATER SERVICE LINES PRIOR TO THE START OF CONSTRUCTION.
5. CONTRACTOR SHALL BE RESPONSIBLE FOR THE LOCATION OF PROPOSED WATER METERS BASED ON CITY OF COLLINSVILLE REGULATIONS AND THE STANDARD SPECIFICATIONS FOR WATER & SEWER MAIN CONSTRUCTION IN ILLINOIS.
6. IN AREAS WHERE FLEXIBLE RUBBER GASKETS WILL BE USED ALTERNATIVE TO WATER QUALITY PIPE, THE CONTRACTOR WILL BE RESPONSIBLE FOR ALL COORDINATION BETWEEN THE CONCRETE PIPE MANUFACTURER AND THE RUBBER GASKET MANUFACTURER TO ENSURE THE CONCRETE PIPES ARE CONSTRUCTED IN ACCORDANCE WITH THE GASKET MANUFACTURER'S SPECIFICATIONS.



**BENCHMARK: BM #108**  
 CHISELED "X" ON TOP NE FLANGE BOLT ON FIRE HYDRANT LOCATED ON N. SIDE OF WILSON AVE. & W. SIDE OF IL RTE 159 AT SE CORNER OF "FARMER'S MARKET" PARKING LOT.  
 STA. 219+28±, 46' LT, ELEV. 544.206

FILE NAME =	USER NAME = default	DESIGNED - DRH	REVISED -
P:\Projects\513501\CADD\DN\0876885-shd.dwg		DRAWN - DRH	REVISED -
		CHECKED - VAM	REVISED -
		DATE - 01/25/2013	REVISED -

**STATE OF ILLINOIS  
 DEPARTMENT OF TRANSPORTATION**

**DRAINAGE AND UTILITY PLAN  
 IL ROUTE 159**

SCALE: 1" = 20' SHEET NO. 50 OF 73 SHEETS STA. 218+00.00 TO STA. 223+50.00

F.A.P. RTE. 600	SECTION 60-(30,31,128)-3	COUNTY MADISON	TOTAL SHEETS 529	SHEET NO. 203
				CONTRACT NO. 76B85
ILLINOIS FED. AID PROJECT				