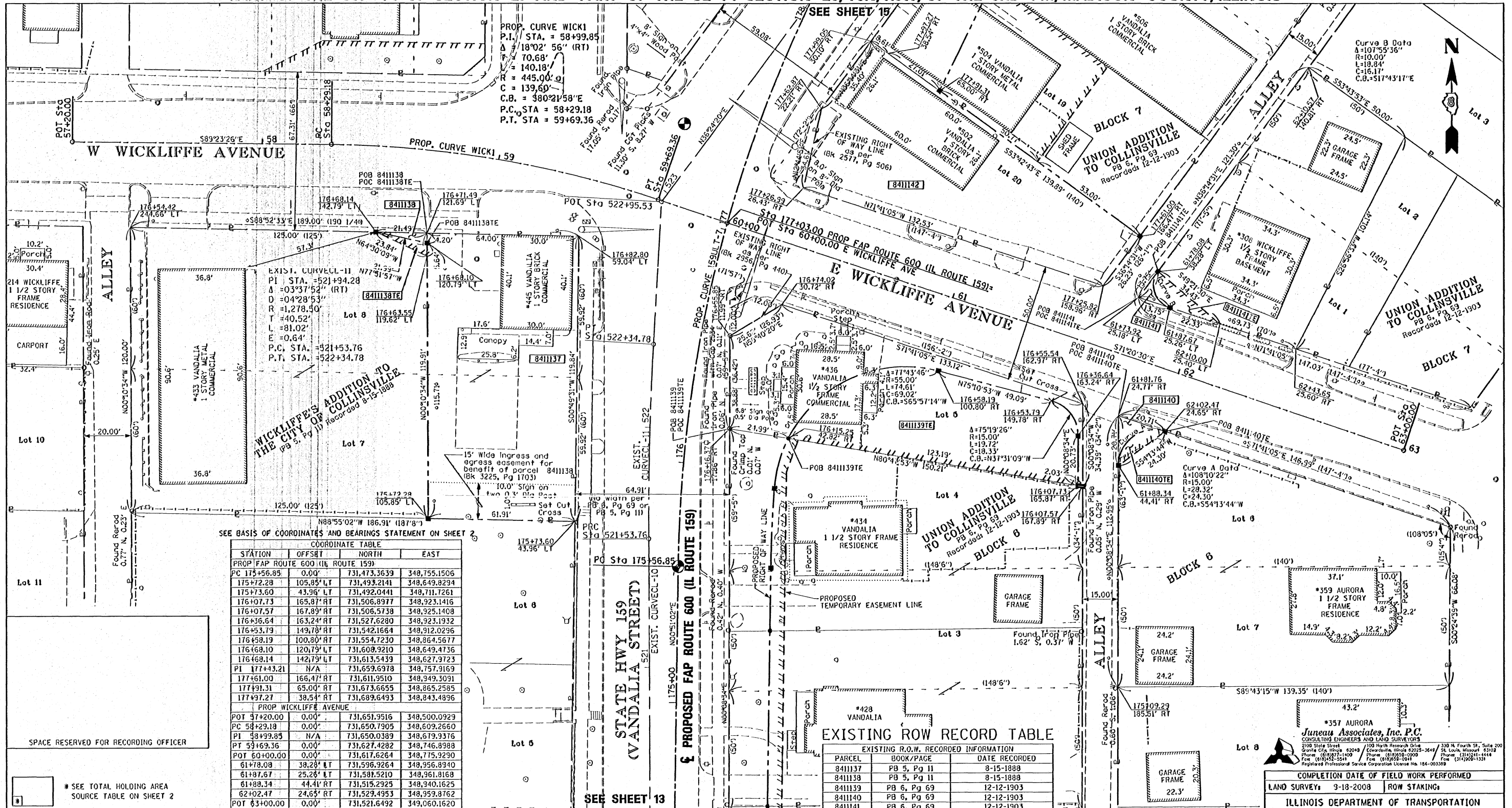


PART OF THE SW 1/4 OF SECTION 27 AND PART OF THE SE 1/4 SECTION 28, T3N, R8W, OF THE 3RD PM, MADISON COUNTY, ILLINOIS



SEE BASIS OF COORDINATES AND BEARINGS STATEMENT ON SHEET 2

COORDINATE TABLE			
STATION	OFFSET	NORTH	EAST
PROP. FAP ROUTE 600 (IL ROUTE 159)			
PC 175+56.85	0.00'	731,473.3639	348,755.1506
175+72.28	105.85' LT	731,493.2141	348,649.8294
176+73.60	43.96' LT	731,492.0441	348,711.7261
176+07.73	165.87' RT	731,506.8977	348,923.1416
176+07.57	167.89' RT	731,506.5738	348,925.1408
176+36.64	163.24' RT	731,527.6280	348,923.1932
176+53.79	149.78' RT	731,542.1664	348,912.0296
176+58.19	100.80' RT	731,554.7230	348,864.5677
176+68.10	120.79' LT	731,608.9210	348,649.4736
176+68.14	142.79' LT	731,613.5439	348,627.9723
PI 177+43.21	N/A	731,659.6978	348,757.9169
177+61.00	166.47' RT	731,611.9510	348,949.3091
177+91.31	65.00' RT	731,673.6655	348,865.2585
177+97.27	38.54' RT	731,689.6493	348,843.4896
PROP. WICKLIFFE AVENUE			
POT 57+20.00	0.00'	731,651.9516	348,500.0929
PC 58+29.18	0.00'	731,650.7905	348,609.2660
PI 58+99.85	N/A	731,650.0389	348,679.9376
PT 59+69.36	0.00'	731,627.4282	348,746.8988
POT 60+00.00	0.00'	731,617.6264	348,775.9290
61+78.08	38.28' LT	731,596.9264	348,956.8940
61+87.67	25.26' LT	731,581.5210	348,961.8168
61+88.34	44.41' RT	731,515.2925	348,940.1625
62+02.47	24.65' RT	731,529.4953	348,359.8762
POT 63+00.00	0.00'	731,521.6492	349,060.1620

EXISTING ROW RECORD TABLE

PARCEL	BOOK/PAGE	DATE RECORDED
8411137	PB 5, Pg 11	8-15-1888
8411138	PB 5, Pg 11	8-15-1888
8411139	PB 6, Pg 69	12-12-1903
8411140	PB 6, Pg 69	12-12-1903
8411141	PB 6, Pg 69	12-12-1903
8411142	PB 6, Pg 69	12-12-1903

PROP. CURVE 159ULT-7
 P.I. STA. = 177+43.21
 $\Delta = 36^{\circ}12'33''$ (RT)
 $T = 186.35'$
 $L = 360.22'$
 $R = 570.00'$
 $C = 354.26'$
 $C.B. = N18^{\circ}57'18''E$
 P.C. STA. = 175+56.85
 P.T. STA. = 179+17.07

STATE OF ILLINOIS)
) SS
 COUNTY OF MADISON)
 I, PHILIP H. HUSKEY, AN ILLINOIS PROFESSIONAL LAND SURVEYOR,
 STATE THAT I HAVE SURVEYED THE PLAT OF HIGHWAY SHOWN HEREON AND THAT THIS
 PROFESSIONAL SERVICE CONFORMS TO THE CURRENT ILLINOIS MINIMUM STANDARDS FOR A
 BOUNDARY SURVEY FOR THE PROPOSED PARCELS TO BE ACQUIRED BY THE STATE OF
 ILLINOIS, DEPARTMENT OF TRANSPORTATION, SHOWN HEREON.
 DATED 4/13/2011
 Philip H. Huskey
 PHILIP H. HUSKEY, PLS NO. 2659
 LICENSE EXPIRATION DATE: 11/30/2012

PARCEL NO.	OWNER	TOTAL HOLDING ACRES	FEE SIMPLE ACQUISITION		REMAINDER ACRES	EASEMENTS		PERMANENT TAX NUMBER	PROPERTY ACQUIRED BY
			GROSS ACRES	SO. FT.		PE = PERMANENT TE = TEMPORARY ACRES	SO. FT.		
8411137	Curtis Kniohoff and Janet L. Kniohoff, his wife, as joint tenants MA-3635.0 Bk. 3218, Pg. 1568	0.1732	0.1732	7,546	0.0000	N/A	N/A	13-2-21-28-20-403-028	
8411138	Bryon E. Sloan and Mary A. Sloan, his wife, as joint tenants MA-3636.0 Bk. 3225, Pg. 1703	0.3441	0.0010	45	0.3431	TE=0.0014	TE=61	13-2-21-28-20-403-029	Grading
8411139	Sean R. Turner and Heidi M. Turner, husband and wife, as tenants by the entirety MA-3663.0 Bk. 4324, Pg. 2124	0.1546	0.0667	2,907	0.0879	TE=0.0879	TE=3,927	13-2-21-27-17-301-005	Building Removal, and Grading
8411140	Melissa E. Wilson and Timothy L. Wilson, as joint tenants MA-3682.0 Doc. No. 2009R59590	0.2868	0.0023	98	0.2845	TE=0.0024	TE=106	13-2-21-27-17-302-021	Grading
8411141	Turner Enterprises, Inc. MA-4136.0 Doc. No. 2005R44509	0.1496	0.0010	43	0.1486	TE=0.0044	TE=193	13-2-21-27-17-302-022	Grading
8411142	MBR IL, L.L.C., a Missouri Limited Liability Company MA-3664.0 Doc. No. 2005R24345	0.1514	0.1514	6,593	0.0000	N/A	N/A	13-2-21-27-17-301-004	Building Removal, Grading & Sight Distance Protection

357 AURORA
 Junear Associates, Inc. P.C.
 CONCRETE ENGINEERS AND LAND SURVEYORS
 2100 State Street, Granite City, Illinois 62040
 Phone: (618) 971-1109 Fax: (618) 971-1109
 100 North Research Drive, Granite City, Illinois 62040
 Phone: (618) 971-1109 Fax: (618) 971-1109
 330 N. Fourth St., Suite 200, St. Louis, Missouri 63102
 Phone: (314) 241-1144 Fax: (314) 241-1144
 Registered Professional Service Corporation License No. 184-003389

COMPLETION DATE OF FIELD WORK PERFORMED
 LAND SURVEY: 9-18-2008 ROW STAKING:

ILLINOIS DEPARTMENT OF TRANSPORTATION
 PLAT OF HIGHWAYS
 FAP ROUTE 600 (IL 159)
 SECTION 60-(30,31,128)-3
 MADISON COUNTY
 JOB NO. R-98-011-04
 STATION 175+00 TO STATION 178+00

SCALE: 1" = 20'

SHEET 14 OF 34

ILLINOIS DEPARTMENT OF TRANSPORTATION
 DIVISION OF HIGHWAYS/REGION 3/DISTRICT 8
 1102 EASTPORT PLAZA DRIVE
 COLLINGSVILLE, ILLINOIS 62234-6198

F.A. RTE.	SECTION	COUNTY	TOTAL SHEETS	SHEET NO.
600	60-(30,31,128)-3	MADISON	529	809

CONTRACT NO. 76886

FED. ROAD DIST. NO. [ILLINOIS] FED. AID PROJECT

053607 JRD