

PART OF THE NW 1/4 OF SECTION 27, T3N, R8W, OF THE 3RD PM, MADISON COUNTY, ILLINOIS

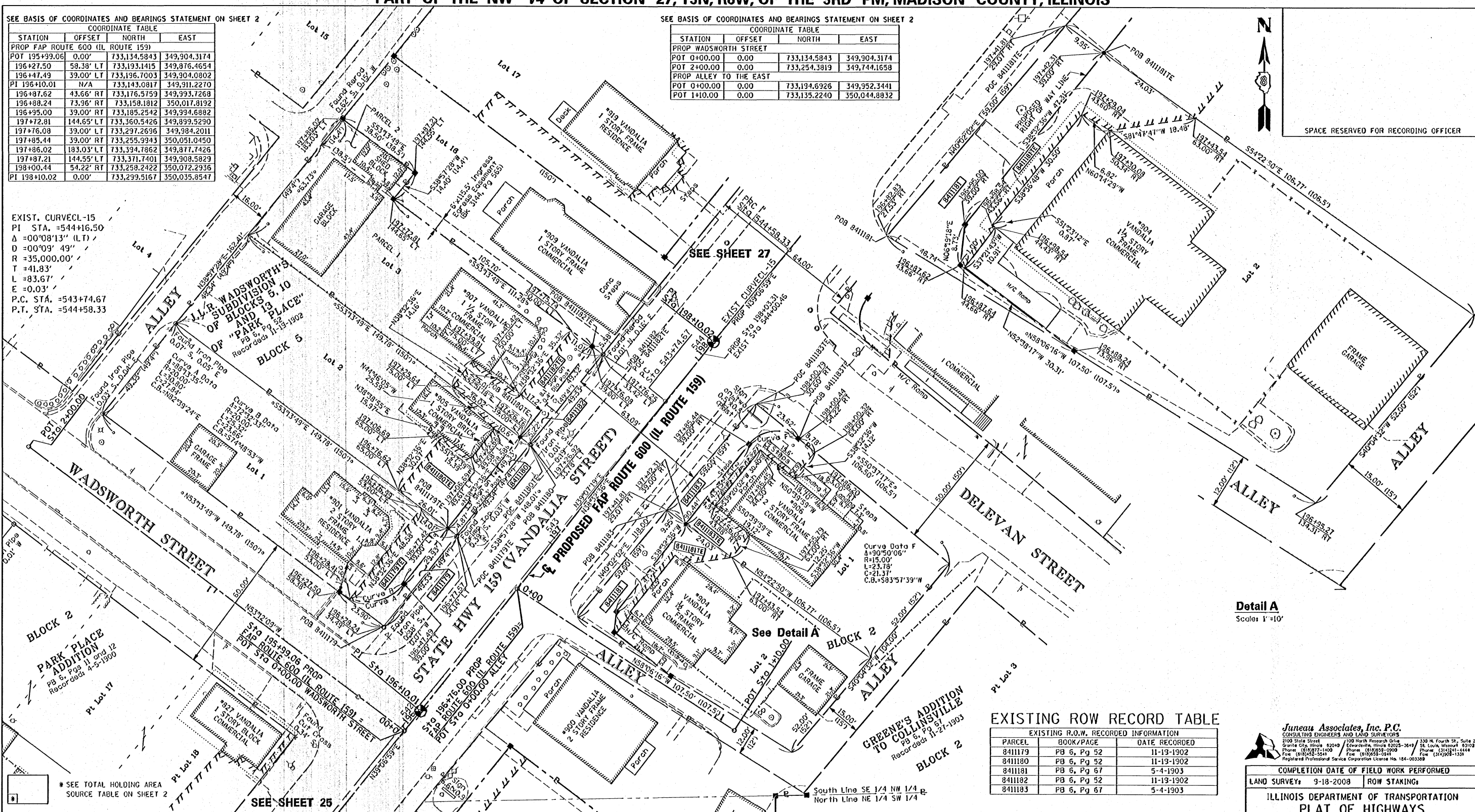
SEE BASIS OF COORDINATES AND BEARINGS STATEMENT ON SHEET 2

STATION	OFFSET	NORTH	EAST
COORDINATE TABLE			
PROP FAP ROUTE 600 (IL ROUTE 159)			
POT 195+99.06	0.00'	733,134.5843	349,904.3174
196+27.50	58.38' LT	733,193.1415	349,876.4654
196+47.49	39.00' LT	733,196.7003	349,904.0802
PI 196+10.01	N/A	733,143.0817	349,911.2270
196+87.62	43.66' RT	733,176.5759	349,993.7268
196+88.24	73.96' RT	733,158.1812	350,017.8192
196+95.00	39.00' RT	733,185.2542	349,994.6882
197+72.81	144.65' LT	733,360.5426	349,899.5290
197+76.08	39.00' LT	733,297.2696	349,984.2011
197+85.44	39.00' RT	733,255.9943	350,051.0450
197+86.02	183.03' LT	733,394.7862	349,877.7426
197+87.21	144.55' LT	733,371.7401	349,908.5829
198+00.44	54.22' RT	733,258.2422	350,072.2936
PI 198+10.02	0.00'	733,299.5167	350,035.8547

SEE BASIS OF COORDINATES AND BEARINGS STATEMENT ON SHEET 2

STATION	OFFSET	NORTH	EAST
COORDINATE TABLE			
PROP WADSWORTH STREET			
POT 0+00.00	0.00	733,134.5843	349,904.3174
POT 2+00.00	0.00	733,254.3819	349,744.1658
PROP ALLEY TO THE EAST			
POT 0+00.00	0.00	733,194.6926	349,952.3441
POT 1+10.00	0.00	733,135.2240	350,044.8832

EXIST. CURVECL-15
 PI STA. =544+16.50
 Δ = 00°08'13" (LT)
 D = 00°09' 49"
 R = 35,000.00'
 T = 41.83'
 L = 83.67'
 E = 0.03'
 P.C. STA. = 543+74.67
 P.T. STA. = 544+58.33



SPACE RESERVED FOR RECORDING OFFICER

Detail A
 Scale: 1" = 10'

EXISTING ROW RECORD TABLE

PARCEL	EXISTING R.O.W. RECORDED INFORMATION	DATE RECORDED
8411179	PB 6, Pg 52	11-19-1902
8411180	PB 6, Pg 52	11-19-1902
8411181	PB 6, Pg 67	5-4-1903
8411182	PB 6, Pg 52	11-19-1902
8411183	PB 6, Pg 67	5-4-1903

Juneau Associates, Inc. P.C.
 CONSULTING ENGINEERS AND LAND SURVEYORS
 2100 State Street, Granite City, Illinois 62040
 Phone: (618) 972-1600 Fax: (618) 972-5241
 1100 North Research Drive, Edwardsville, Illinois 62025-2649
 Phone: (618) 958-0908 Fax: (618) 958-0941
 330 N. Fourth St., Suite 200, St. Louis, Missouri 63102
 Phone: (314) 241-4444 Fax: (314) 241-1331
 Registered Professional Service Corporation License No. 184-003389

COMPLETION DATE OF FIELD WORK PERFORMED	
LAND SURVEY:	9-18-2008
ROW STAKING:	

ILLINOIS DEPARTMENT OF TRANSPORTATION
 PLAT OF HIGHWAYS
 FAP ROUTE 600 (IL 159)
 SECTION 60-(30,31,128)-3
 MADISON COUNTY
 JOB NO. R-98-011-04
 STATION 195+90 TO STATION 198+20

SCALE: 1" = 20'

SHEET 26 OF 34

ILLINOIS DEPARTMENT OF TRANSPORTATION
 DIVISION OF HIGHWAYS/REGION 5/DISTRICT 8
 1102 EASTPORT PLAZA DRIVE
 COLLINGSVILLE, ILLINOIS 62234-6198

PARCEL NO.	OWNER	TOTAL HOLDING ACRES	FEE SIMPLE ACQUISITION		AREA TO BE DEDICATED		REMAINDER ACRES	EASEMENTS		PERMANENT TAX NUMBER	PROPERTY ACQUIRED BY
			GROSS ACRES	SQ. FT.	ACRES	SQ. FT.		PE = PERMANENT ACRES	TE = TEMPORARY SQ. FT.		
8411179	Denzel E. Berry and Eula M. Berry, his wife, as joint tenants MA-3717.0 Bk 2515, Pg 326	0.1695	0.0071	311	N/A	N/A	0.1624	TE=0.0140	TE=612	Grading	13-2-21-27-09-103-017
8411180	Darrell G. Nichols MA-3718.0 Bk 2509, Pg 69	0.1695	0.0057	249	N/A	N/A	0.1638	0.0236	TE=1,030	Entrance Construction and Grading	13-2-21-27-09-103-015
8411181	Karl L. Wulff MA-3457.0 Doc No 2005R60127	0.1356	0.0161	702	N/A	N/A	0.1195	TE=0.0095	TE=414	TE=Sidewalk Construction and Grading	13-2-21-27-10-102-024
8411182	Steven L. Kirsch MA-3719.0 Bk 4210, Pg 1872	0.1822	N/A	N/A	0.0061	266	0.1822	TE=0.0207	TE=895	Entrance Construction and Grading	13-2-21-27-09-103-014
8411183	Marilyn M. Stevens, Trustee of the Marilyn M. Stevens Trust dated 9/26/2002 MA-3456.0 Bk 4519, Pg 2699	0.1357	0.0135	597	N/A	N/A	0.1222	TE=0.0174	TE=757	Sidewalk Construction and Grading	13-2-21-27-10-102-023

STATE OF ILLINOIS)
) SS
 COUNTY OF MADISON)

I, PHILIP H. HUSKEY, AN ILLINOIS PROFESSIONAL LAND SURVEYOR, STATE THAT I HAVE SURVEYED THE PLAT OF HIGHWAY SHOWN HEREON AND THAT THIS PROFESSIONAL SERVICE CONFORMS TO THE CURRENT ILLINOIS MINIMUM STANDARDS FOR A BOUNDARY SURVEY FOR THE PROPOSED PARCELS TO BE ACQUIRED BY THE STATE OF ILLINOIS, DEPARTMENT OF TRANSPORTATION, SHOWN HEREON.

DATED 4/13/2011

Philip H. Huskey
 PHILIP H. HUSKEY, PLS No. 2659
 LICENSE EXPIRATION DATE: 11/30/2012

