

PART OF THE N.W. 1/4 AND PART OF THE N.E. 1/4 OF SECTION 27, T. 3 N., R. 8 W. OF THE 3RD P.M., IN MADISON COUNTY, ILLINOIS

PARCEL NO.	OWNER	TOTAL HOLDING ACRES	FEE SIMPLE ACQUISITION		REMAINDER ACRES	EASEMENTS		PERMANENT TAX NUMBER(S)	PROPERTY ACQUIRED BY
			ACRES	SQ. FT.		PE = PERMANENT ACRES	TE = TEMPORARY SQ. FT.		
8411223	Gateway Apartments, Inc. BK 3489, PG 1795; BK 3946, PG 45 TITLE REPORT NO. MA-3471	1.2485	0	0	1.2485	TE 0.0490	TE 2,135	13-2-21-27-06-102-010.001 13-2-21-27-06-102-011	
8411225	O'Reilly Automotive, Inc. BK 4517, PG 2636 TITLE REPORT NO. MA-3483	0.8436	0	0	0.8436	TE 0.0312	TE 1,359	13-2-21-27-07-201-001.001	

SPACE RESERVED FOR RECORDING OFFICER

* SEE TOTAL HOLDING AREA SOURCE TABLE ON SHEET 2
SEE SHEET 2 FOR LEGEND

STATE OF ILLINOIS)
) SS
COUNTY OF MADISON)

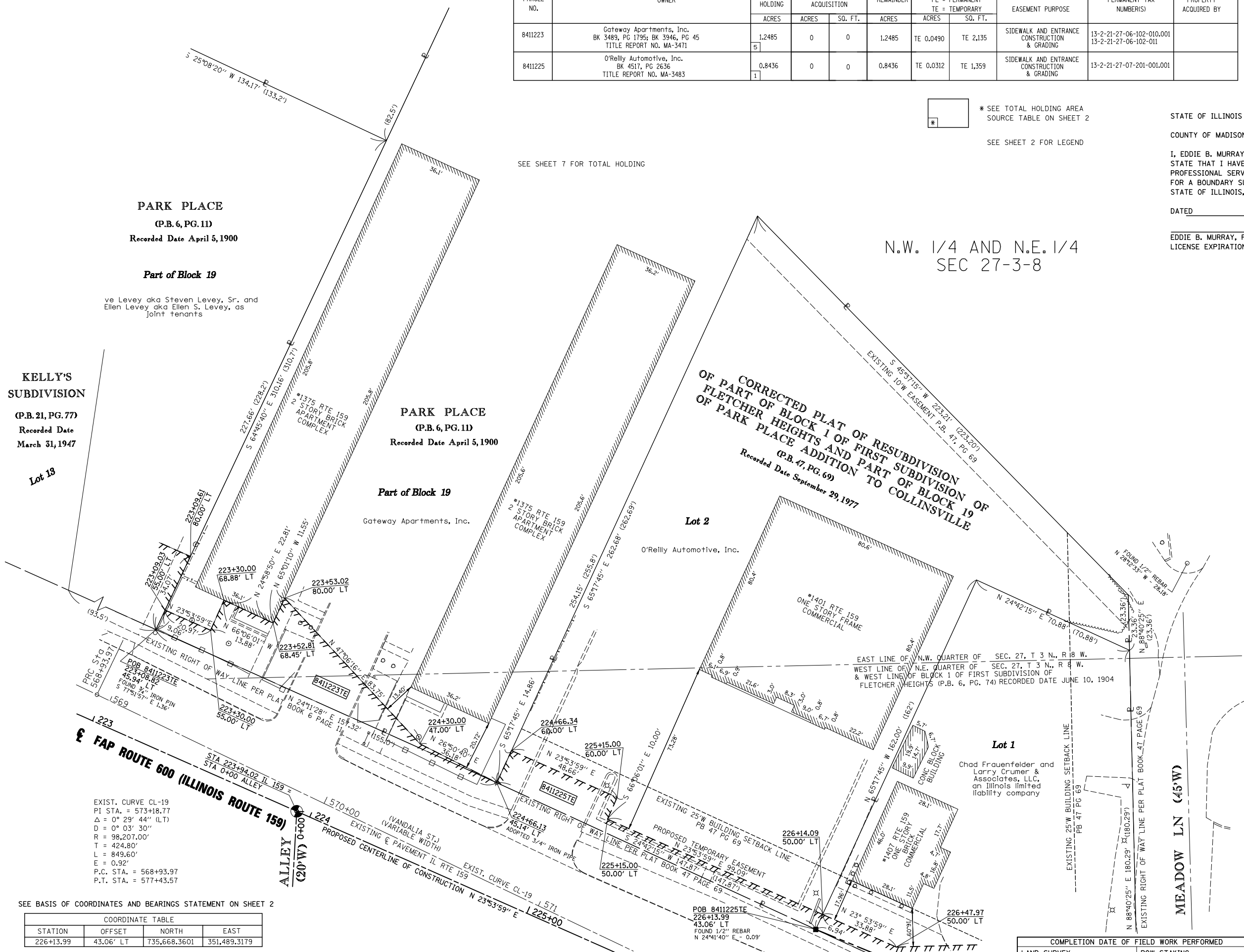
I, EDDIE B. MURRAY, AN ILLINOIS PROFESSIONAL LAND SURVEYOR, STATE THAT I HAVE SURVEYED THE PLAT OF HIGHWAY SHOWN HEREON AND THAT THIS PROFESSIONAL SERVICE CONFORMS TO THE CURRENT ILLINOIS MINIMUM STANDARDS FOR A BOUNDARY SURVEY FOR THE PROPOSED PARCEL(S) TO BE ACQUIRED BY THE STATE OF ILLINOIS, DEPARTMENT OF TRANSPORTATION, SHOWN HEREON.

DATED _____
EDDIE B. MURRAY, PLS NO. 35-003126
LICENSE EXPIRATION DATE: 11/30/2010

INSERT SURVEYORS SEAL HERE

SEE SHEET 7 FOR TOTAL HOLDING

N.W. 1/4 AND N.E. 1/4
SEC 27-3-8



EDSI
ENGINEERING DESIGN SOURCE, INC.

16141 SWINGLEY RIDGE RD, SUITE 300,
CHESTERFIELD, MO 63017
PHONE (636) 537-5585
REG. No 184002570

ILLINOIS DEPARTMENT OF TRANSPORTATION
PLAT OF HIGHWAYS
FAP ROUTE 600 (IL 159)
SECTION 60-(30,31,128)-3
MADISON COUNTY
JOB NO. R-98-011-04
STATION 223+00 TO STATION 226+00

SCALE: 1" = 20'

ILLINOIS DEPARTMENT OF TRANSPORTATION
DIVISION OF HIGHWAYS/REGION 5/DISTRICT 8
1102 EASTPORT PLAZA DRIVE
COLLINSVILLE, ILLINOIS 62234-6198

F.A.P. RTE.	SECTION	COUNTY	TOTAL SHEETS	SHEET NO.
600	60-(30,31,128)-3	MADISON	529	341

CONTRACT NO. _____

FED. ROAD DIST. NO. _____ ILLINOIS FED. AID PROJECT

EXIST. CURVE CL-19
PI STA. = 573+18.77
Δ = 0° 29' 44" (LT)
D = 0° 03' 30"
R = 98,207.00'
T = 424.80'
L = 849.60'
E = 0.92'
P.C. STA. = 568+93.97
P.T. STA. = 577+43.57

SEE BASIS OF COORDINATES AND BEARINGS STATEMENT ON SHEET 2

COORDINATE TABLE			
STATION	OFFSET	NORTH	EAST
226+13.99	43.06' LT	735,668.3601	351,489.3179