

PART OF THE N.W. 1/4 AND PART OF THE N.E. 1/4 OF SECTION 27, AND PART OF THE S.E. 1/4 OF SECTION 22, T. 3 N., R. 8 W. OF THE 3RD P.M., IN MADISON COUNTY, ILLINOIS

PARCEL NO.	OWNER	TOTAL HOLDING		REMAINDER	EASEMENTS		PERMANENT TAX NUMBER(S)	PROPERTY ACQUIRED BY
		ACRES	SO. FT.		ACRES	SO. FT.		
8411226	Chad Frauenfelder and Larry Crumer & Associates, LLC, an Illinois limited liability company DOC. NO. 2009R43732 TITLE REPORT NO. MA-3484	0.4107	0.0218 951	0.3889	TE 0.0611	TE 2,660	13-2-21-27-07-201-001	
8411228	Valvoline Instant Oil Change, Inc., a Delaware Corporation BK 3562, PG 1094 TITLE REPORT NO. MA-3485	0.4086	0.0006 26	0.4080	TE 0.0335	TE 1,460	13-2-21-22-19-403-009	
8411237	Osborn & Osborn, LLC DOC. NO. 2006R04259 TITLE REPORT NO. MA-3486	0.1722	0 0	0.1722	TE 0.0194	TE 843	13-2-21-22-19-403-010	

SPACE RESERVED FOR RECORDING OFFICER

STATE OF ILLINOIS)
COUNTY OF MADISON) SS

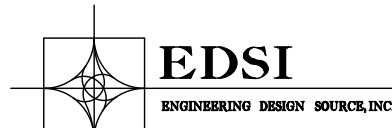
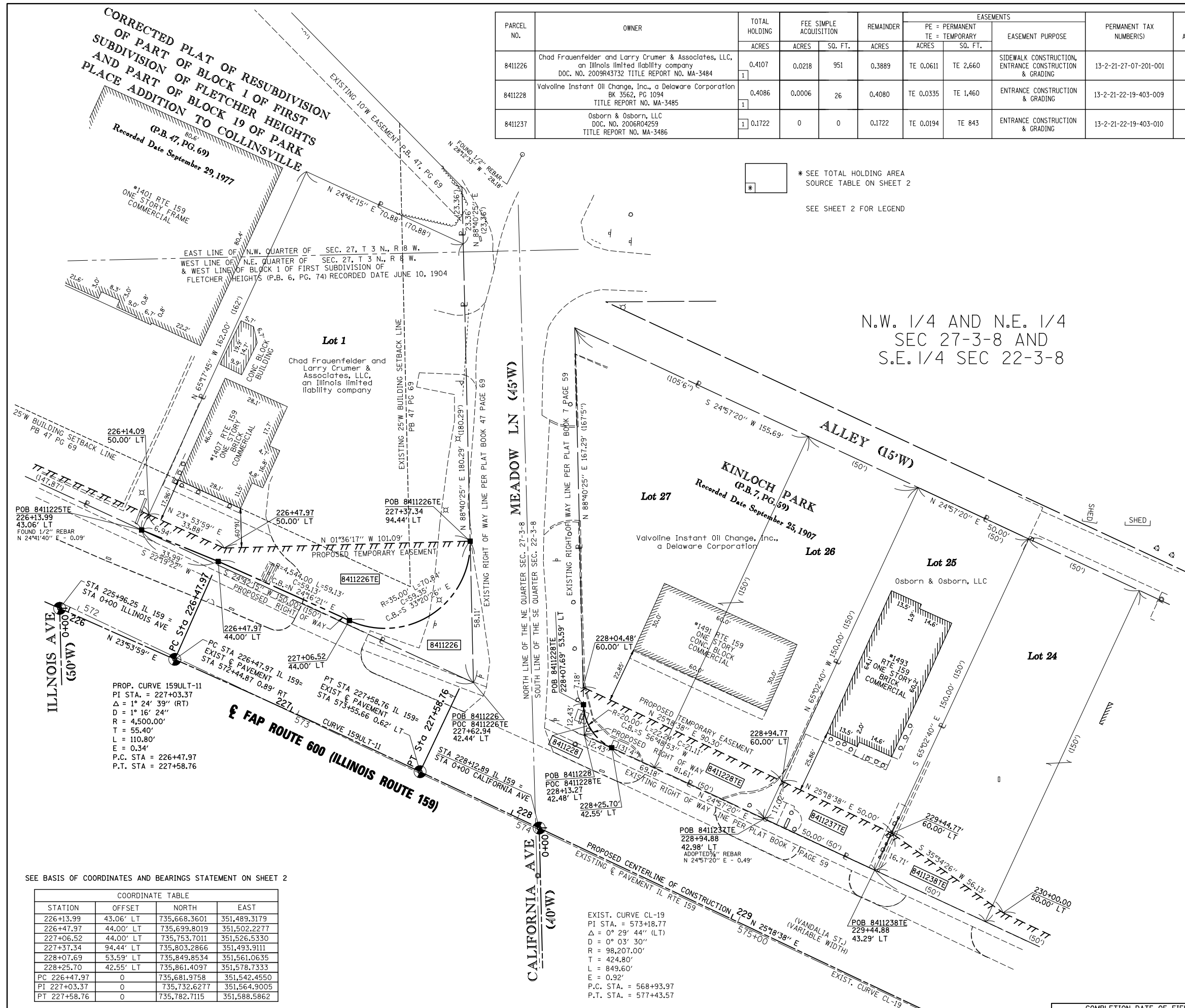
I, EDDIE B. MURRAY, AN ILLINOIS PROFESSIONAL LAND SURVEYOR, STATE THAT I HAVE SURVEYED THE PLAT OF HIGHWAY SHOWN HEREON AND THAT THIS PROFESSIONAL SERVICE CONFORMS TO THE CURRENT ILLINOIS MINIMUM STANDARDS FOR A BOUNDARY SURVEY FOR THE PROPOSED PARCEL(S) TO BE ACQUIRED BY THE STATE OF ILLINOIS, DEPARTMENT OF TRANSPORTATION, SHOWN HEREON.

DATED _____

EDDIE B. MURRAY, PLS NO. 35-003126
LICENSE EXPIRATION DATE: 11/30/2010

INSERT SURVEYORS SEAL HERE

* SEE TOTAL HOLDING AREA SOURCE TABLE ON SHEET 2
SEE SHEET 2 FOR LEGEND



**16141 SWINGLEY RIDGE RD, SUITE 300,
CHESTERFIELD, MO 63017
PHONE (636) 537-5585
REG. No 184002570**

ILLINOIS DEPARTMENT OF TRANSPORTATION
PLAT OF HIGHWAYS
FAP ROUTE 600 (IL 159)
SECTION 60-(30,31,128)-3
MADISON COUNTY
JOB NO. R-98-011-04
STATION 226+00 TO STATION 230+00

ILLINOIS DEPARTMENT OF TRANSPORTATION
DIVISION OF HIGHWAYS/REGION 5/DISTRICT 8
1102 EASTPORT PLAZA DRIVE
COLLINSVILLE, ILLINOIS 62234-6198

F.A.P. RTE.	SECTION	COUNTY	TOTAL SHEETS	SHEET NO.
600	60-(30,31,128)-3	MADISON	529	342

COMPLETION DATE OF FIELD WORK PERFORMED _____
LAND SURVEY: _____ ROW STAKING: _____

FED. ROAD DIST. NO. _____ ILLINOIS FED. AID PROJECT

SEE BASIS OF COORDINATES AND BEARINGS STATEMENT ON SHEET 2

STATION	OFFSET	NORTH	EAST
226+13.99	43.06' LT	735,668.3601	351,489.3179
226+47.97	44.00' LT	735,699.8019	351,502.2277
227+06.52	44.00' LT	735,753.7011	351,526.5330
227+37.34	94.44' LT	735,803.2866	351,493.9111
228+07.69	53.59' LT	735,849.8534	351,561.0635
228+25.70	42.55' LT	735,861.4097	351,578.7333
PC 226+47.97	0	735,681.9758	351,542.4550
PI 227+03.37	0	735,732.6277	351,564.9005
PT 227+58.76	0	735,782.7115	351,588.5862