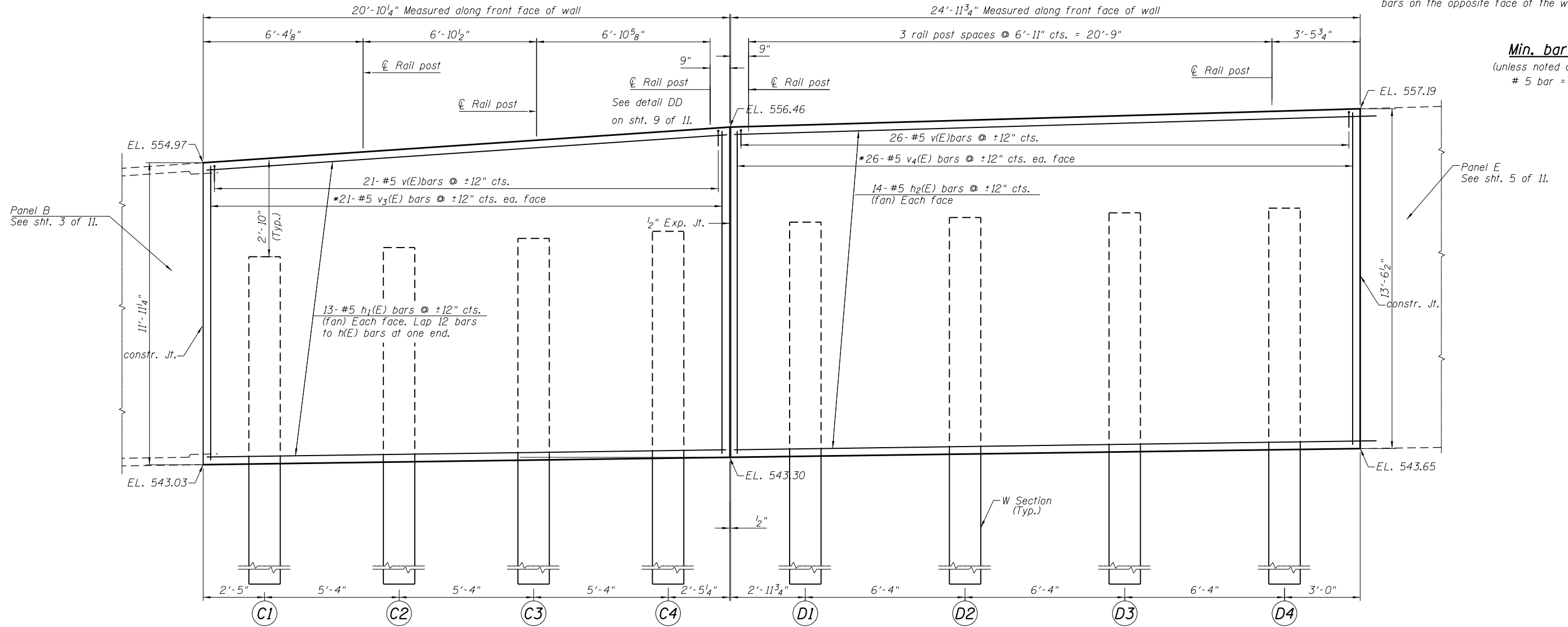


STATE OF ILLINOIS
DEPARTMENT OF TRANSPORTATION

Note:
For cross section thru panels, drilled pile and joint detail see sht. 7 of 11.
For Soldier pile data & Bill of Material see sht. 8 of 11
For Rail Post Details, see sheet 9 of 11.

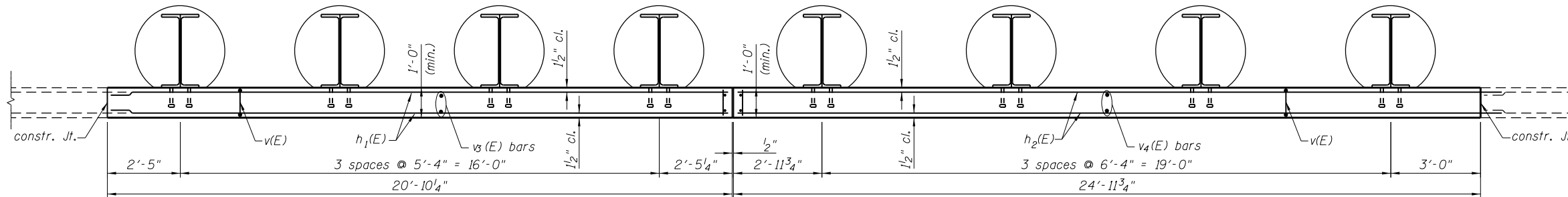
* order $v_3(E)$ & $v_4(E)$ bars full length cut to fit
as per Bar Cutting Diagram shown
on sht. 8 of 11. Use remainder of
bars on the opposite face of the wall.

Min. bar laps
(unless noted otherwise)
5 bar = 1'-8"



ELEVATION
PANEL C

ELEVATION
PANEL D



PLAN
PANEL C

PLAN
PANEL D

PANELS C & D

DESIGNED - KRG
CHECKED - MJK
DRAWN - GSJ
CHECKED - MJK

MID-AMERICA ENGINEERING SERVICES

SHEET NO. 4 11 SHEETS	F.A.P. RTE.	SECTION	COUNTY	TOTAL SHEETS	SHEET NO.
	600	60-(30,31,128)-3	Madison	529	522
Structure No. 060-W007			CONTRACT NO. 76B85		
FED. ROAD DIST. NO.		ILLINOIS FED. AID PROJECT			