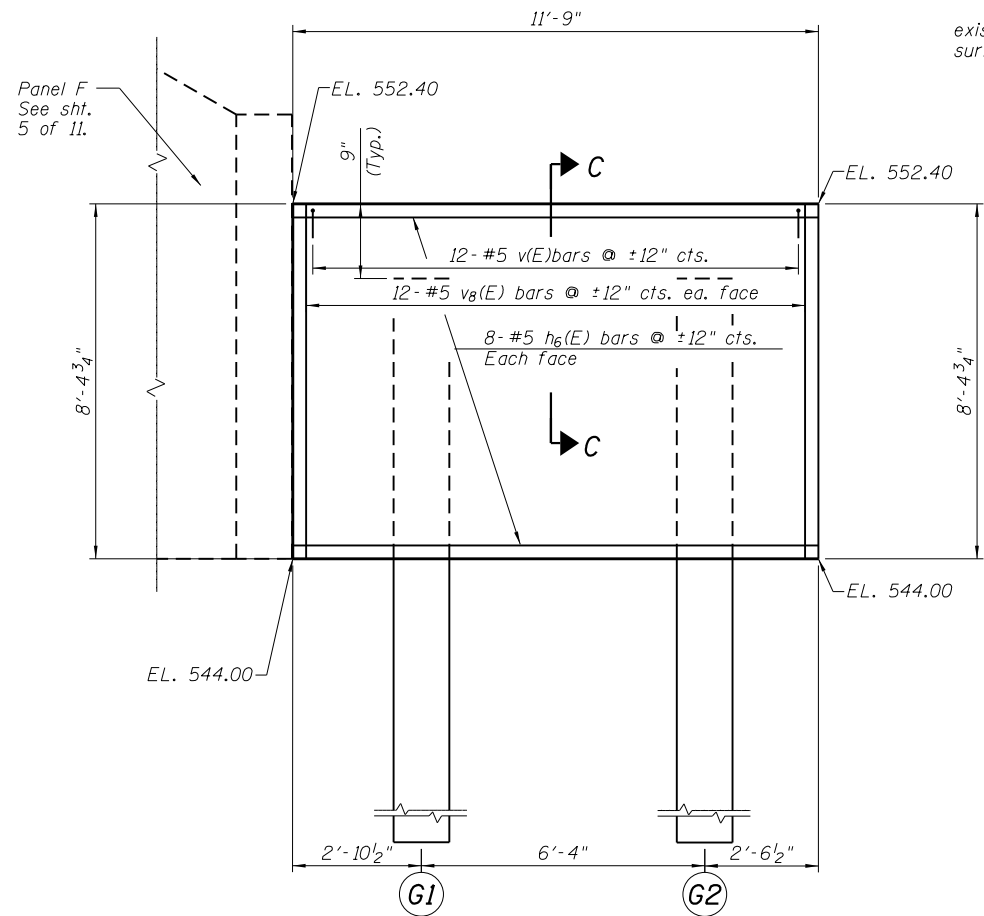
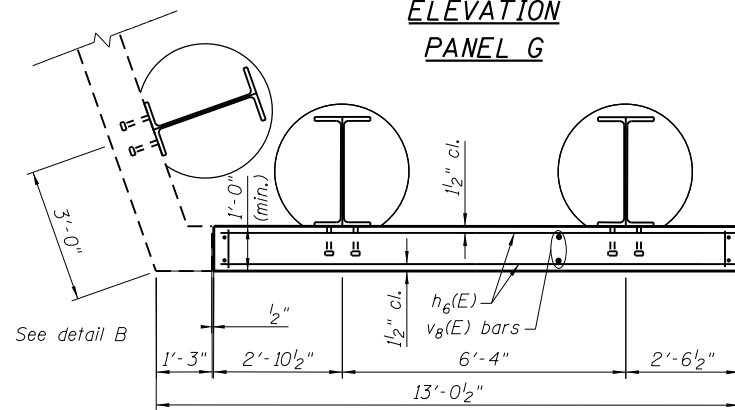


STATE OF ILLINOIS
DEPARTMENT OF TRANSPORTATION

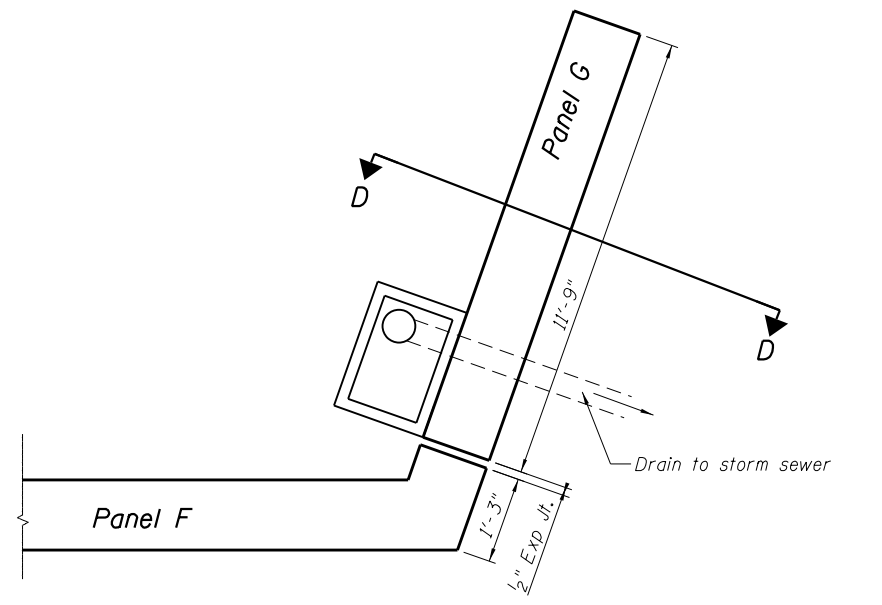
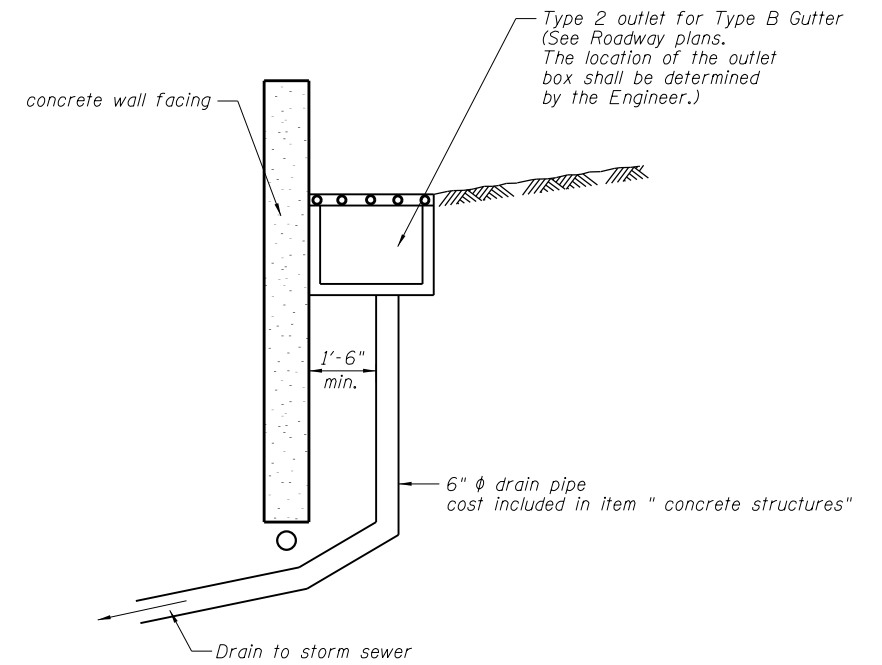
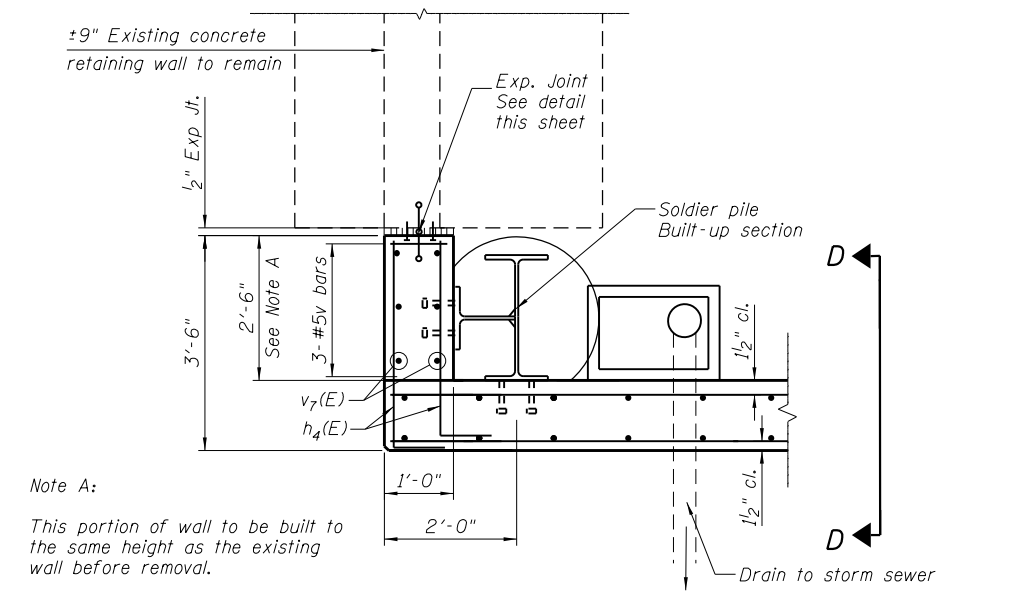
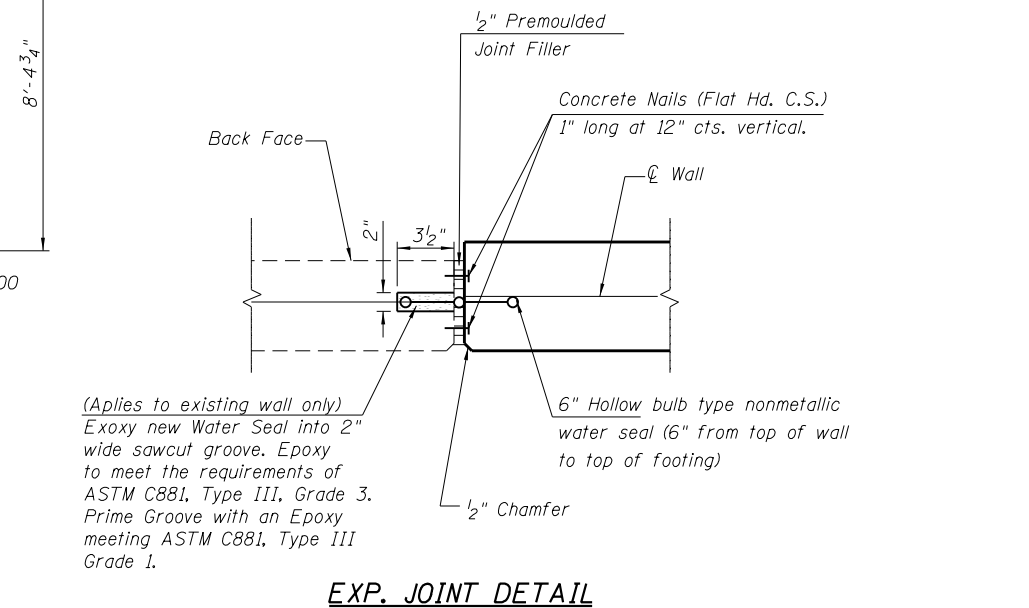
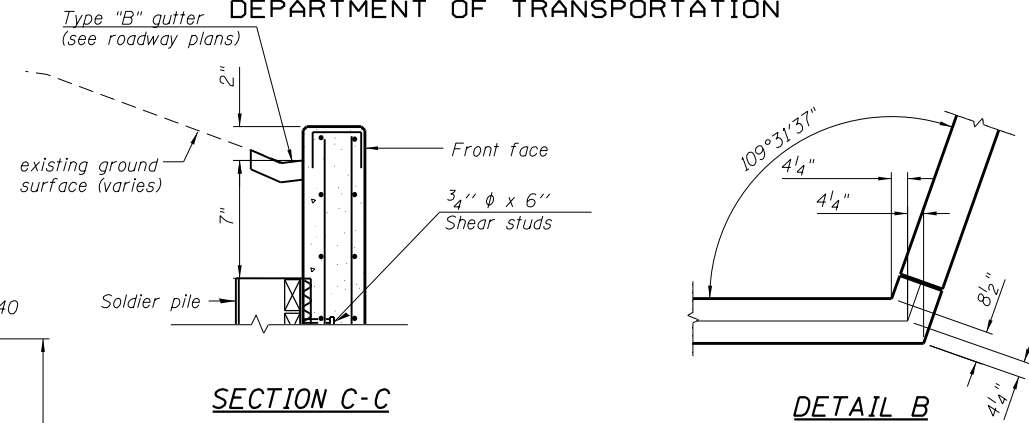
Note:
For cross section thru panels drilled pile and const. Jt. details, see sht. 7 of 11.
For Soldier pile data & Bill of Material see sht. 8 of 11.



ELEVATION
PANEL G



PLAN
PANEL G



PLAN
DETAIL BB
See Detail A for location of Type 2 Outlet at South End of wall

DESIGNED - KRG
CHECKED - MJK
DRAWN - GSJ
CHECKED - MJK

PANEL G

SHEET NO. 6	F.A.P. RTE.	SECTION	COUNTY	TOTAL SHEETS	SHEET NO.
	600	60-(30,31,128)-3	Madison	529	524
11 SHEETS	Structure No. 060-W007		CONTRACT NO. 76B85		
FED. ROAD DIST. NO.		ILLINOIS FED. AID PROJECT			