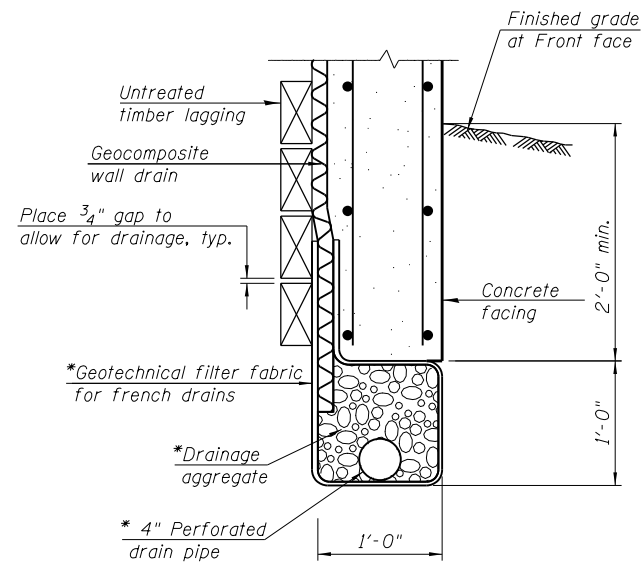
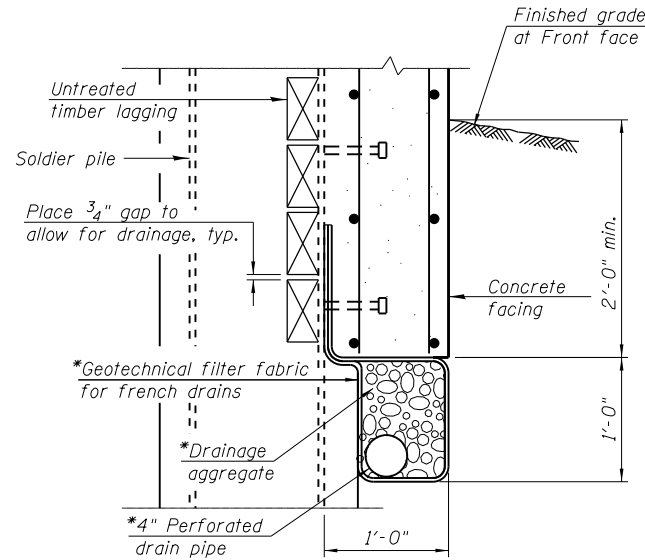


STATE OF ILLINOIS  
DEPARTMENT OF TRANSPORTATION

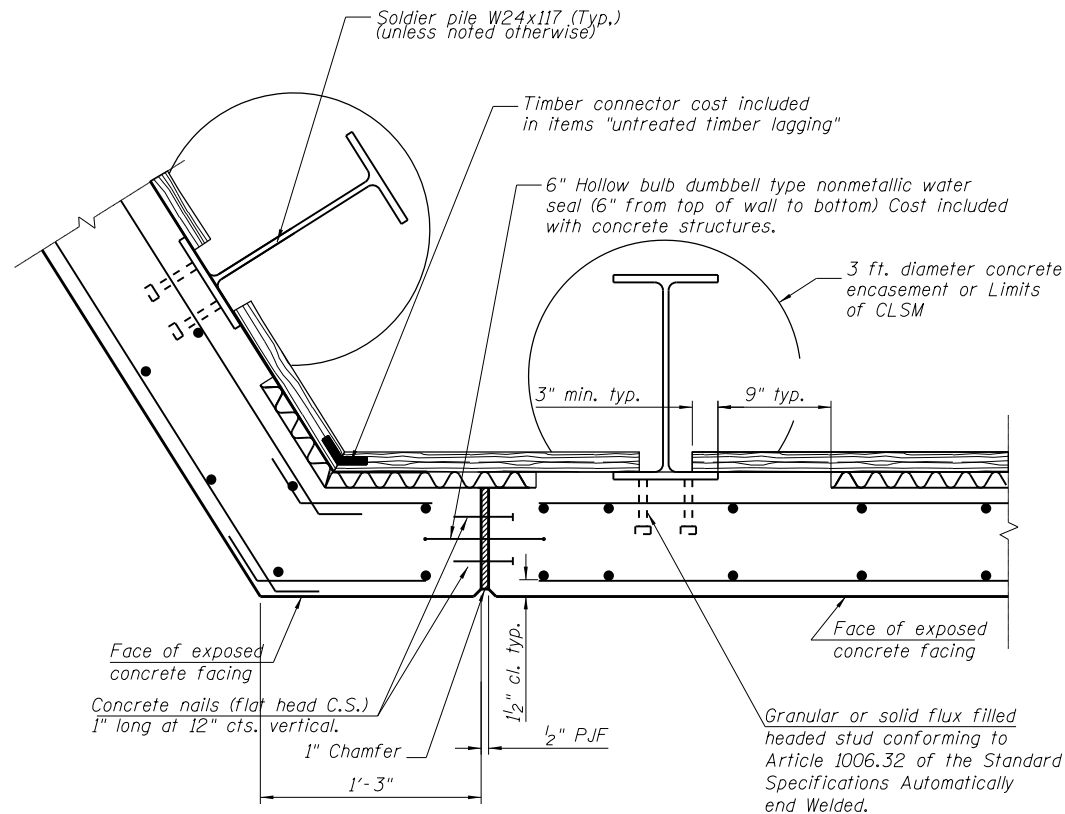


**UNDER DRAIN DETAIL  
BETWEEN SOLDIER PILES**

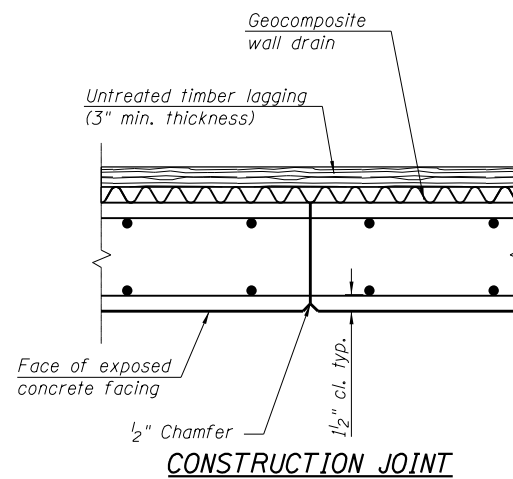


**UNDER DRAIN DETAIL  
AT SOLDIER PILES**

\* Included in the cost of Pipe Underdrains for structures, 4".

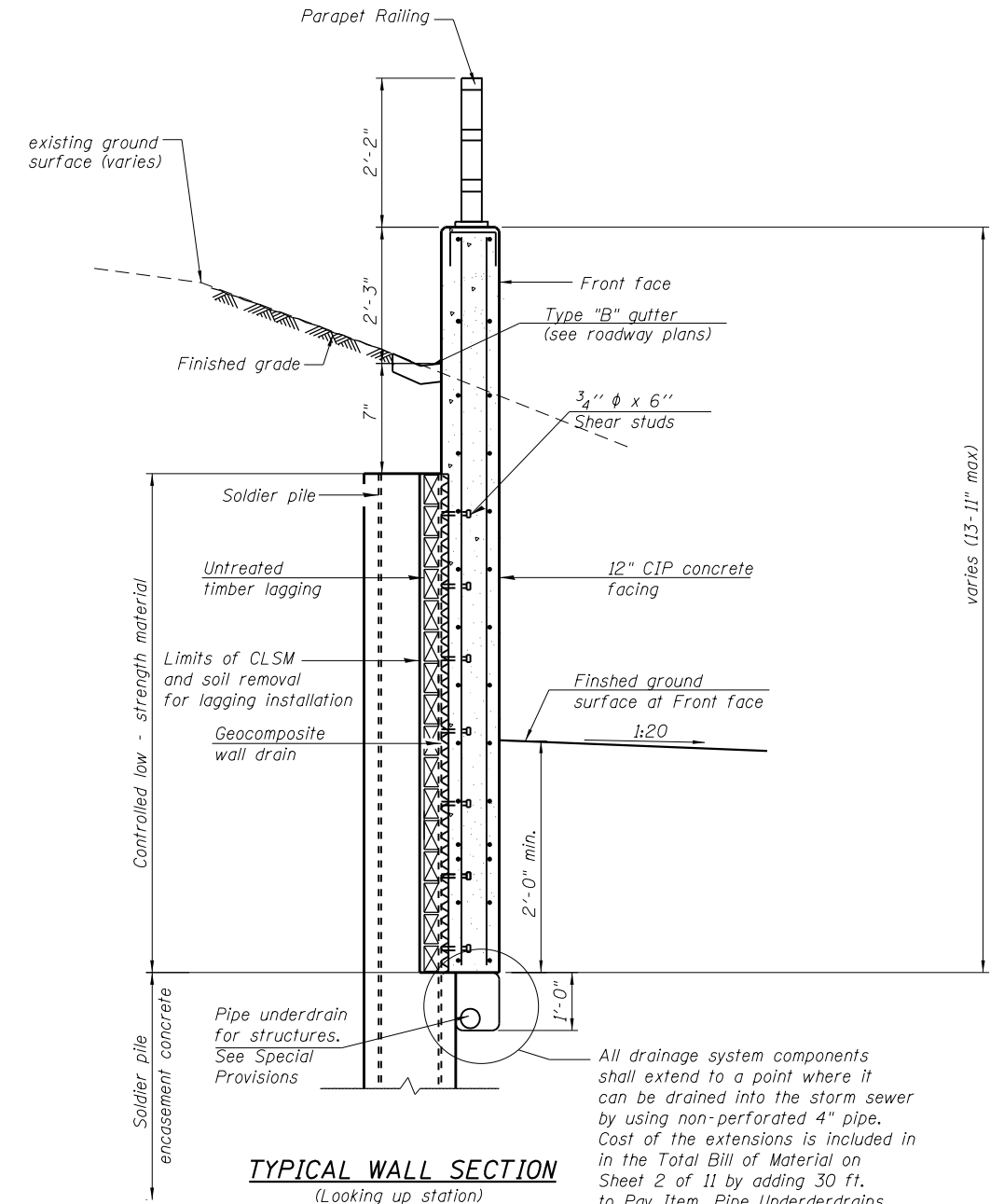


**EXPANSION JOINT**



**CONSTRUCTION JOINT**

Note: The contractor is responsible for the design and performance of the lagging using no less than 3 in. nominal rough-sawn thickness and timber with a minimum allowable bending stress of 1000 psi.



**TYPICAL WALL SECTION  
(Looking up station)**

All drainage system components shall extend to a point where it can be drained into the storm sewer by using non-perforated 4" pipe. Cost of the extensions is included in the Total Bill of Material on Sheet 2 of 11 by adding 30 ft. to Pay Item, Pipe Underdrains for Structures, 4".

DESIGNED - KRG
CHECKED - MJK
DRAWN - GSJ
CHECKED - MJK

**SOLDIER PILE WALL DETAILS**

SHEET NO. 7  11 SHEETS	F.A.P. RTE.	SECTION	COUNTY	TOTAL SHEETS	SHEET NO.
	600	60-(30,31,128)-3	Madison	529	525
Structure No. 060-W007			CONTRACT NO. 76B85		
FED. ROAD DIST. NO.		ILLINOIS FED. AID PROJECT			

MID-AMERICA ENGINEERING SERVICES