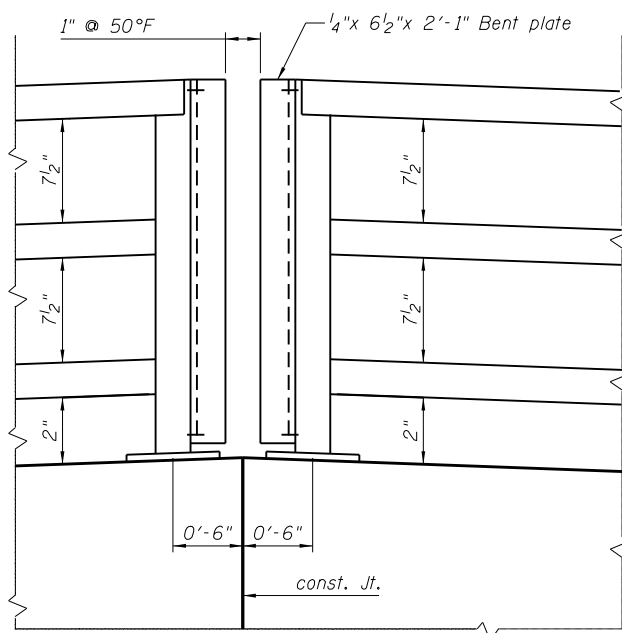
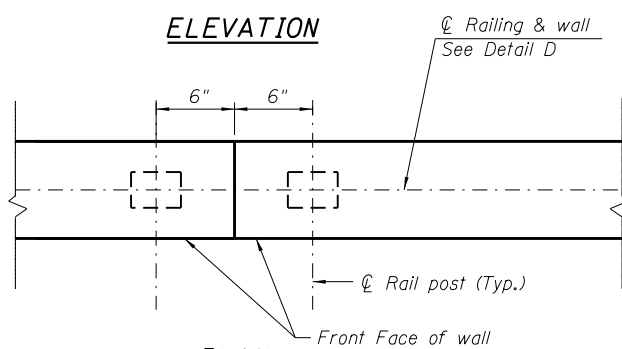


HSS indicates hollow structural section.

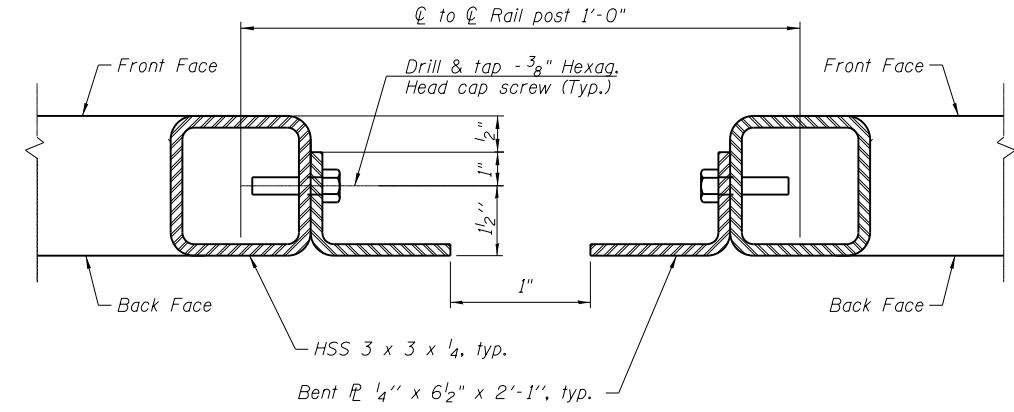
STATE OF ILLINOIS
DEPARTMENT OF TRANSPORTATION



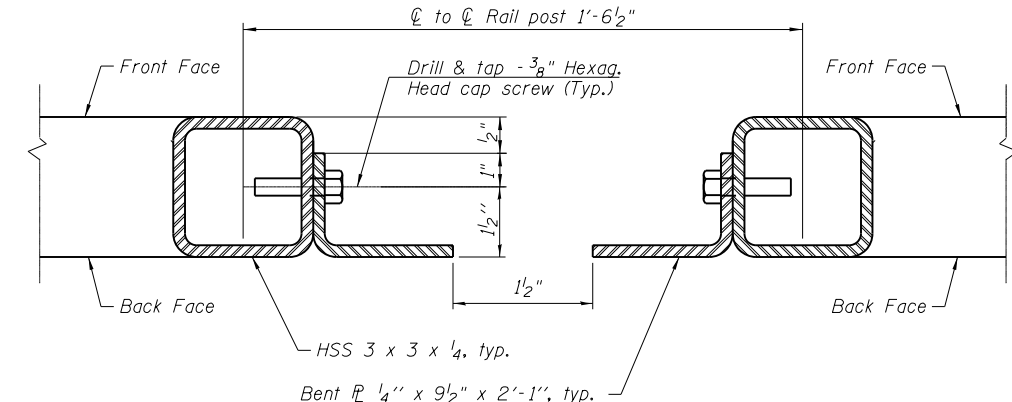
ELEVATION



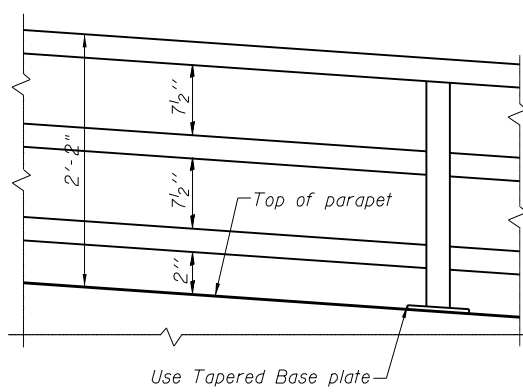
PLAN
DETAIL CC



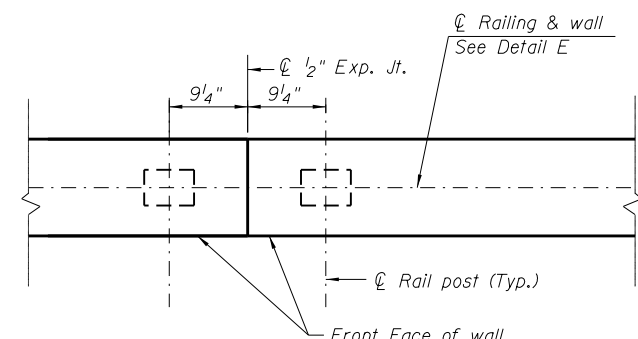
DETAIL D



DETAIL E

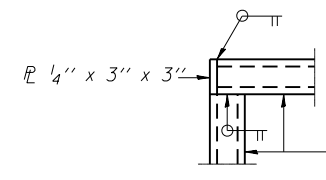


PARAPET RAILING ELEVATION
(Inclined top of wall)

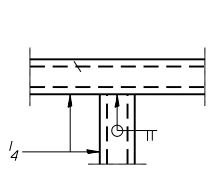


PLAN
DETAIL DD
(See Note A)

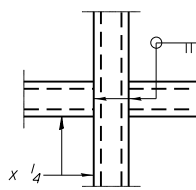
Note A: Elevation view similar to that shown for Detail CC



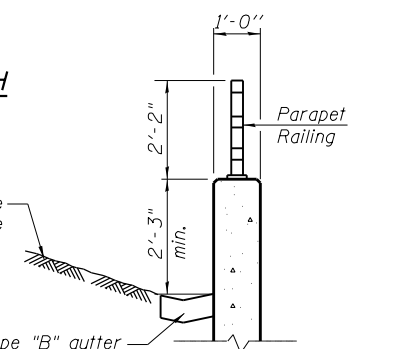
DETAIL A



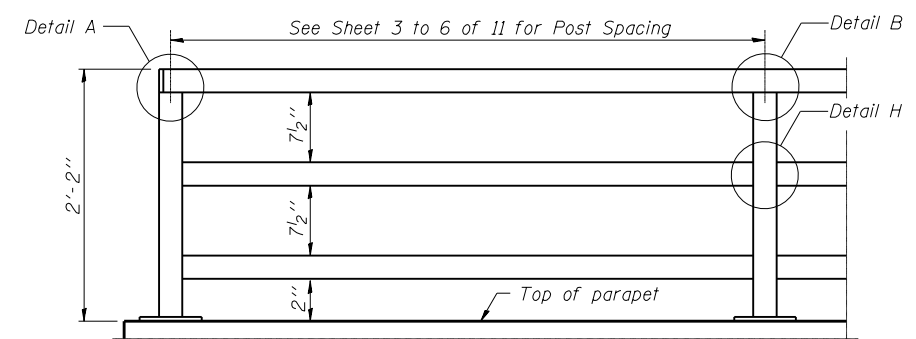
DETAIL B



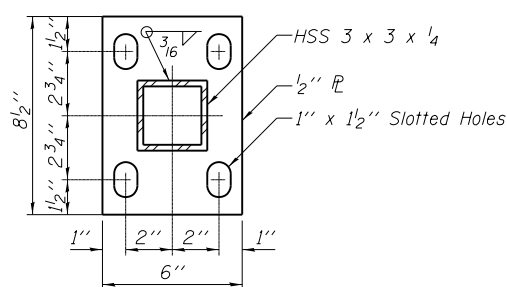
DETAIL H



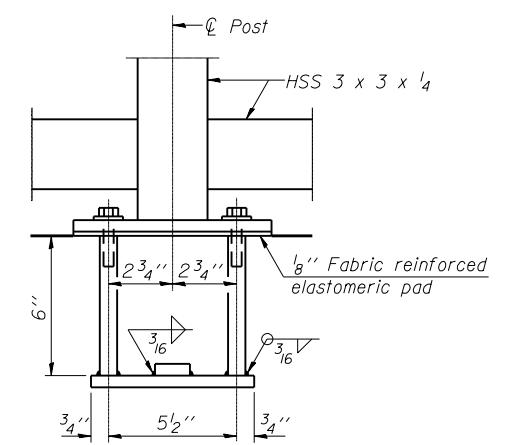
SECTION THRU PARAPET



PARAPET RAILING
ELEVATION
(Inside Face of Three Element Rail)

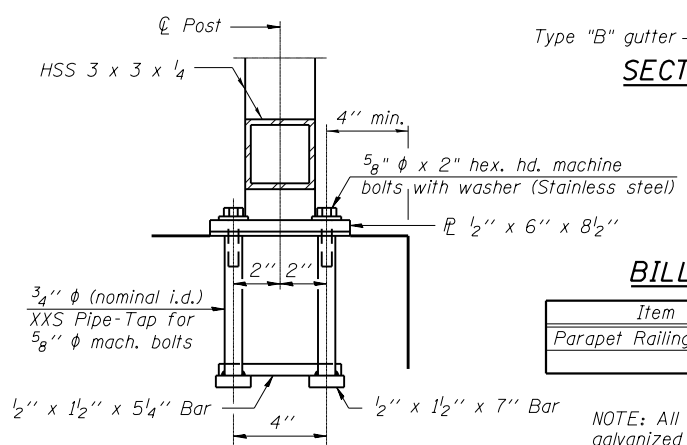


BASE PLATE



ANCHOR BOLT DETAILS

In lieu of the cast-in-place anchor device shown, the Contractor has the option of drilling and setting 5/8 inch diameter anchor rods according to Article 509.06 of the Standard Specifications. Embedment shall be according to the manufacturer's specifications.



BILL OF MATERIAL

Item	Unit	Quantity
Parapet Railing	Foot	138

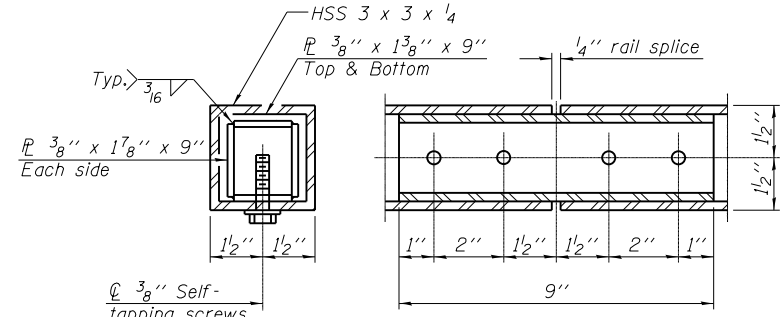
NOTE: All steel railing elements shall be galvanized according to article 509.05 of the Standard Specifications.

HHCS designates Hexagonal head cap screws
HHS designates hollow structural section.

PARAPET RAILING

SHEET NO.	F.A.P. RTE.	SECTION	COUNTY	TOTAL SHEETS	SHEET NO.
11 SHEETS	600	60-(30,31,128)-3	Madison	529	527
		Structure No. 060-W007		CONTRACT NO. 76B85	
		FED. ROAD DIST. NO.	ILLINOIS	FED. AID PROJECT	

DESIGNED - KRG
CHECKED - MJK
DRAWN - GSJ
CHECKED - MJK



RAIL SPLICE

MID-AMERICA ENGINEERING SERVICES