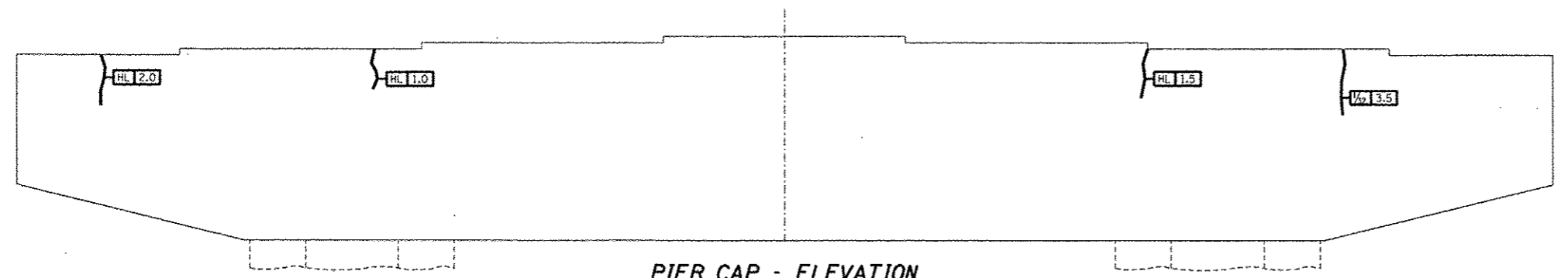
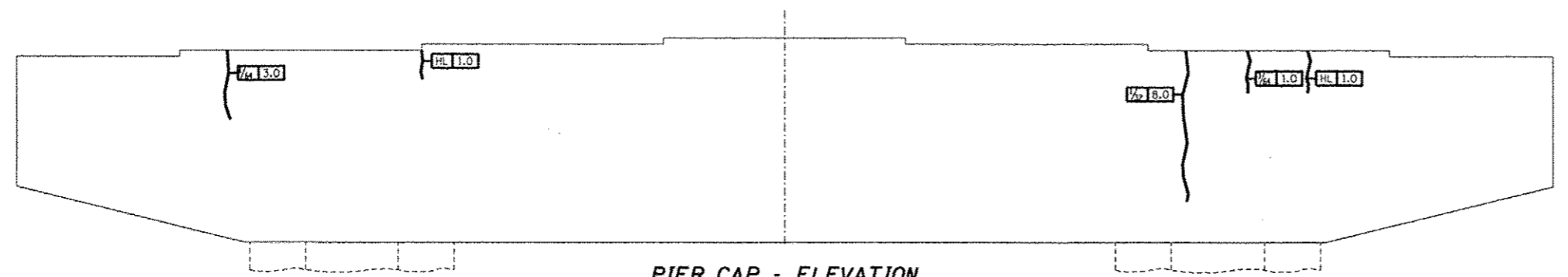


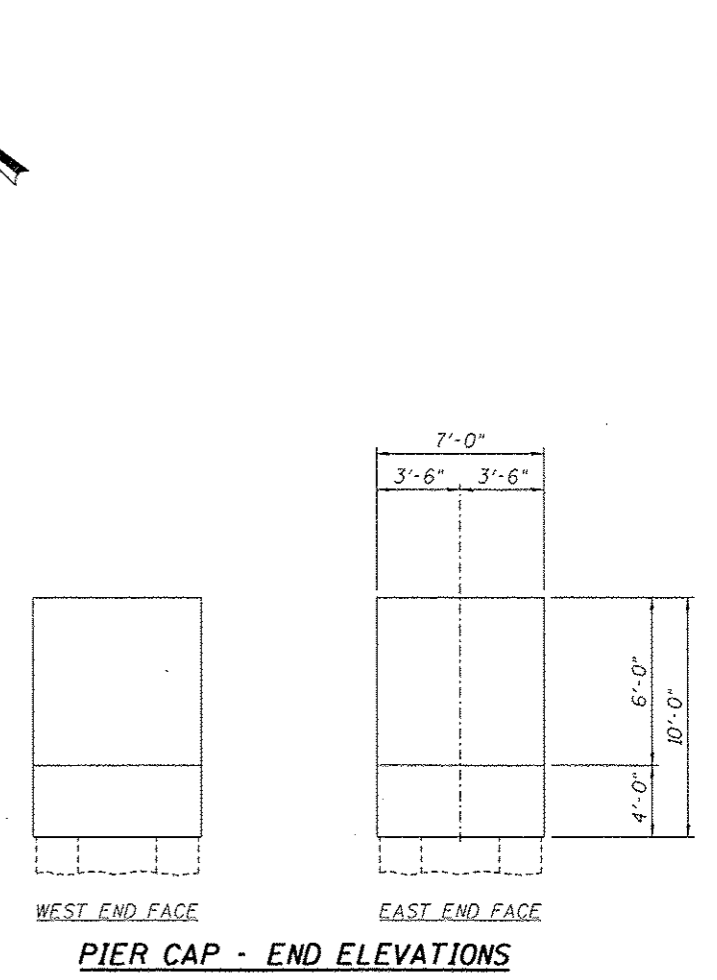
PIER CAP - PLAN - PIER 1



PIER CAP - ELEVATION
Looking North

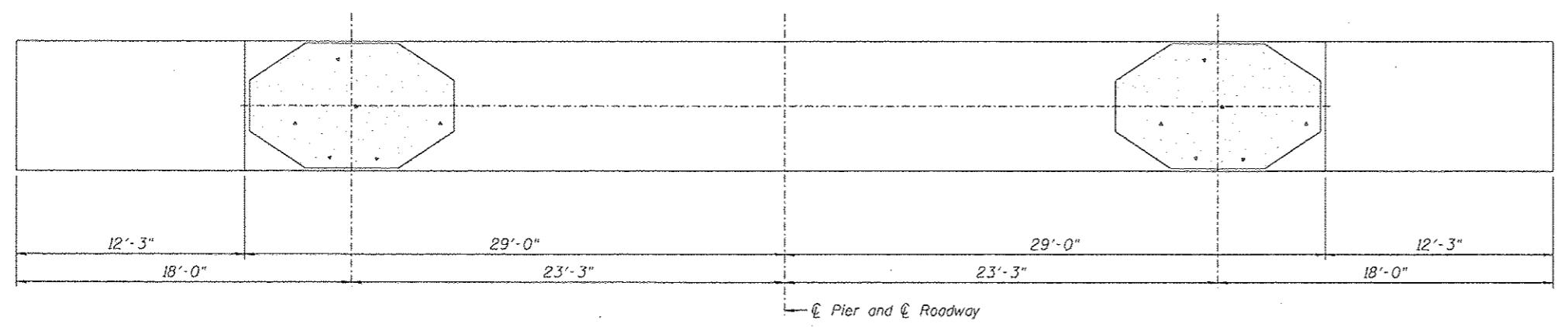


PIER CAP - ELEVATION
Looking South



PIER CAP - END ELEVATIONS

HL 12' Crack Length (Feet)
 Crack Width (Inches)
CRACKS < 1/16"
 Hairline Cracks (HL) or
 Cracks < 1/16" not to be Sealed.



PIER CAP - UNDERSIDE

DESIGNED -	EXAMINED _____ DATE _____	STATE OF ILLINOIS DEPARTMENT OF TRANSPORTATION	REPAIRS TO - PIER NUMBER 1 - CAP		F.A.P. RTE. 304	SECTION 100B-1DS-1	COUNTY MADISON	TOTAL SHEETS 58	SHEET NO. 28
CHECKED -	ENGINEER OF STRUCTURAL SERVICES		STRUCTURE NO. 060-0255		CONTRACT NO. 76E73		ILLINOIS FED. AID PROJECT		
DRAWN Rod	PASSED _____		SHEET NO. 18 OF 48 SHEETS						
CHECKED MNM	ENGINEER OF BRIDGES AND STRUCTURES								