

F.A.I. RTE.	SECTION	COUNTY	TOTAL SHEETS	SHEET NO.
64	82-5HB-3-P	ST. CLAIR	12	1
		ILLINOIS	CONTRACT NO.76G33	

STATE OF ILLINOIS  
DEPARTMENT OF TRANSPORTATION  
DIVISION OF HIGHWAYS

**PROPOSED  
HIGHWAY PLANS**

FAI 64 (I-064)  
SECTION 82-5HB-3-P

BRIDGE PAINTING  
ST CLAIR COUNTY

C-98-035-13

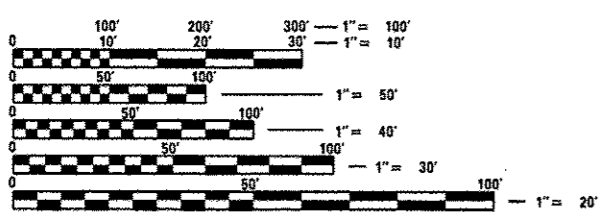
FOR INDEX OF SHEETS, SEE SHEET NO. 2

I 64  
2011 ADT = 77500 (ACTUAL)  
2013 ADT = 78600 (ESTIMATED)  
2033 ADT = 90400 (ESTIMATED)  
SU = 2.0% MU = 9.0%

IL 159  
2011 ADT = 35400 (ACTUAL)  
2013 ADT = 35900 (ESTIMATED)  
2033 ADT = 41300 (ESTIMATED)  
SU = 1.1% MU = 0.8%

DESIGN DESIGNATION  
N/A

PROJECT LOCATION  
IL 159 OVER I-64  
SN 082-0176

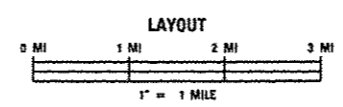
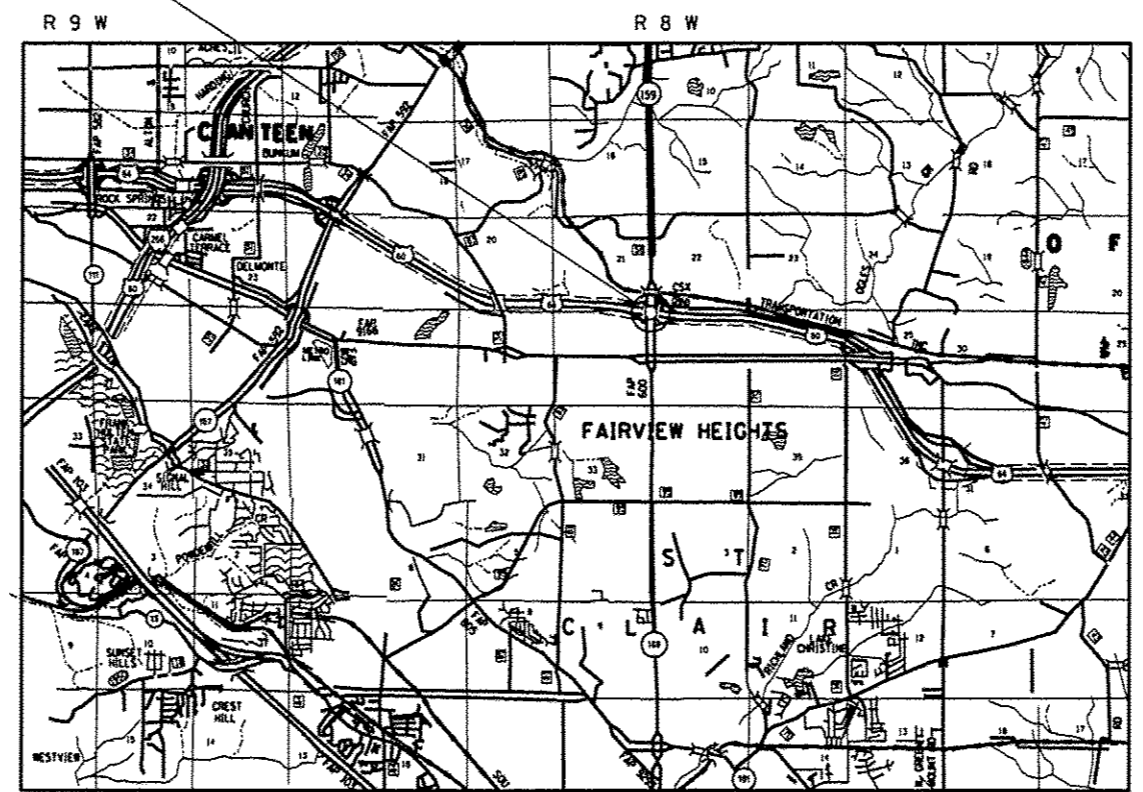


FULL SIZE PLANS HAVE BEEN PREPARED USING STANDARD ENGINEERING SCALES. REDUCED SIZED PLANS WILL NOT CONFORM TO STANDARD SCALES. IN MAKING MEASUREMENTS ON REDUCED PLANS, THE ABOVE SCALES MAY BE USED.

J.U.L.I.E.  
JOINT UTILITY LOCATION INFORMATION FOR EXCAVATION  
1-800-892-0123  
OR 811

PROJECT ENGINEER: PATTI LeBEAU (618) 346-3179  
PROJECT MANAGER: REBECCA THARP (618) 346-3323

CONTRACT NO. 76G33



LATITUDE: 38.59901°  
LONGITUDE: 89.98481°

GROSS LENGTH = 0.044 MI



STATE OF ILLINOIS  
DEPARTMENT OF TRANSPORTATION  
DIVISION OF HIGHWAYS

SUBMITTED March 29 2013  
Jeffrey L. Keim  
DEPUTY DIRECTOR OF HIGHWAYS, REGION 5 ENGINEER

April 26 2013  
John D. Baranelli P.E.  
ENGINEER OF DESIGN AND ENVIRONMENT

April 26 2013  
Omer Osman, P.E.  
DIRECTOR OF HIGHWAYS, CHIEF ENGINEER

**PRINTED BY THE AUTHORITY  
OF THE STATE OF ILLINOIS**