

STATE OF ILLINOIS
DEPARTMENT OF TRANSPORTATION
DIVISION OF HIGHWAYS

**PROPOSED
HIGHWAY PLANS**

FAI ROUTE 24 (I-24)
SECTION (64-3B)L-1

NAVIGATIONAL LIGHTING REPAIRS
MASSAC COUNTY

C-99-061-11

F.A.I. RTE.	SECTION	COUNTY	TOTAL SHEETS	SHEET NO.
I-24	64-3B)L-1	MASSAC	7	1
		ILLINOIS	CONTRACT NO. 78273	

FOR INDEX OF SHEETS, SEE SHEET NO. 2
FOR SUMMARY OF QUANTITIES, SEE SHEET NO. 2

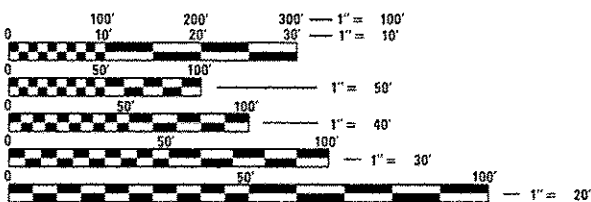
TRAFFIC DATA

I-24 TRAFFIC DATA

2009 ADT = 30,360
20% TRUCKS

TOWNSHIPS:

COUNTY UNIT ROAD DISTRICT



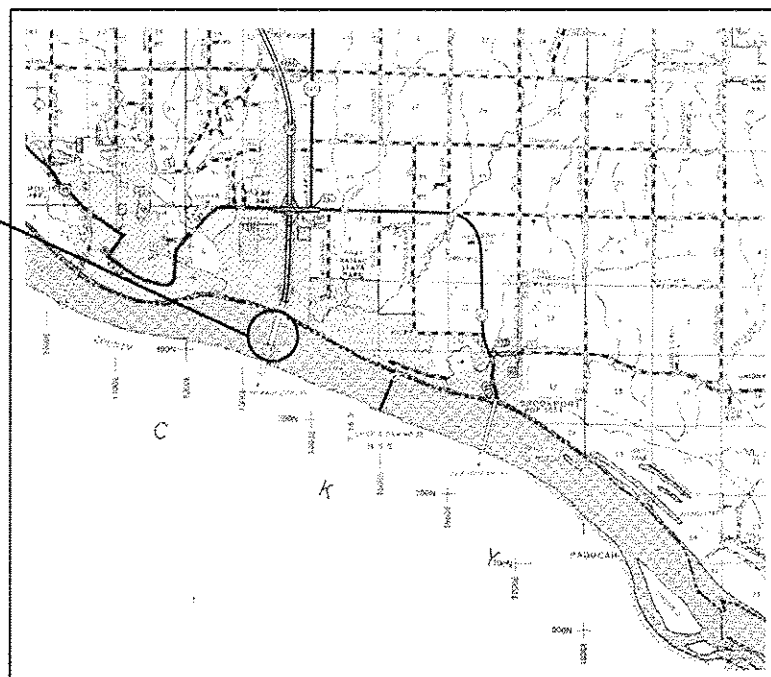
FULL SIZE PLANS HAVE BEEN PREPARED USING STANDARD ENGINEERING SCALES. REDUCED SIZED PLANS WILL NOT CONFORM TO STANDARD SCALES. IN MAKING MEASUREMENTS ON REDUCED PLANS, THE ABOVE SCALES MAY BE USED.

J.U.L.I.E.
JOINT UTILITY LOCATION INFORMATION FOR EXCAVATION
1-800-892-0123
OR 811

PROJECT ENGINEER: T. WAYNE HALSTEAD (618) 351-5228
PROJECT MANAGER: DAVID PICHE (618) 351-5227

CONTRACT NO. 78273

EXISTING STRUCTURE NO. 064-0035
FAI 24



LOCATION OF SECTION INDICATED THUS: - [black rectangle] -

STATE OF ILLINOIS
DEPARTMENT OF TRANSPORTATION
DIVISION OF HIGHWAYS

SUBMITTED March 26 2013
Jeffrey L. Keim
DEPUTY DIRECTOR OF HIGHWAYS, REGION ENGINEER

April 26 2013
John P. Baranzelli, P.E. /a
ENGINEER OF DESIGN AND ENVIRONMENT

April 26 2013
Omer Osman, P.E. /a
DIRECTOR OF HIGHWAYS, CHIEF ENGINEER

**PRINTED BY THE AUTHORITY
OF THE STATE OF ILLINOIS**