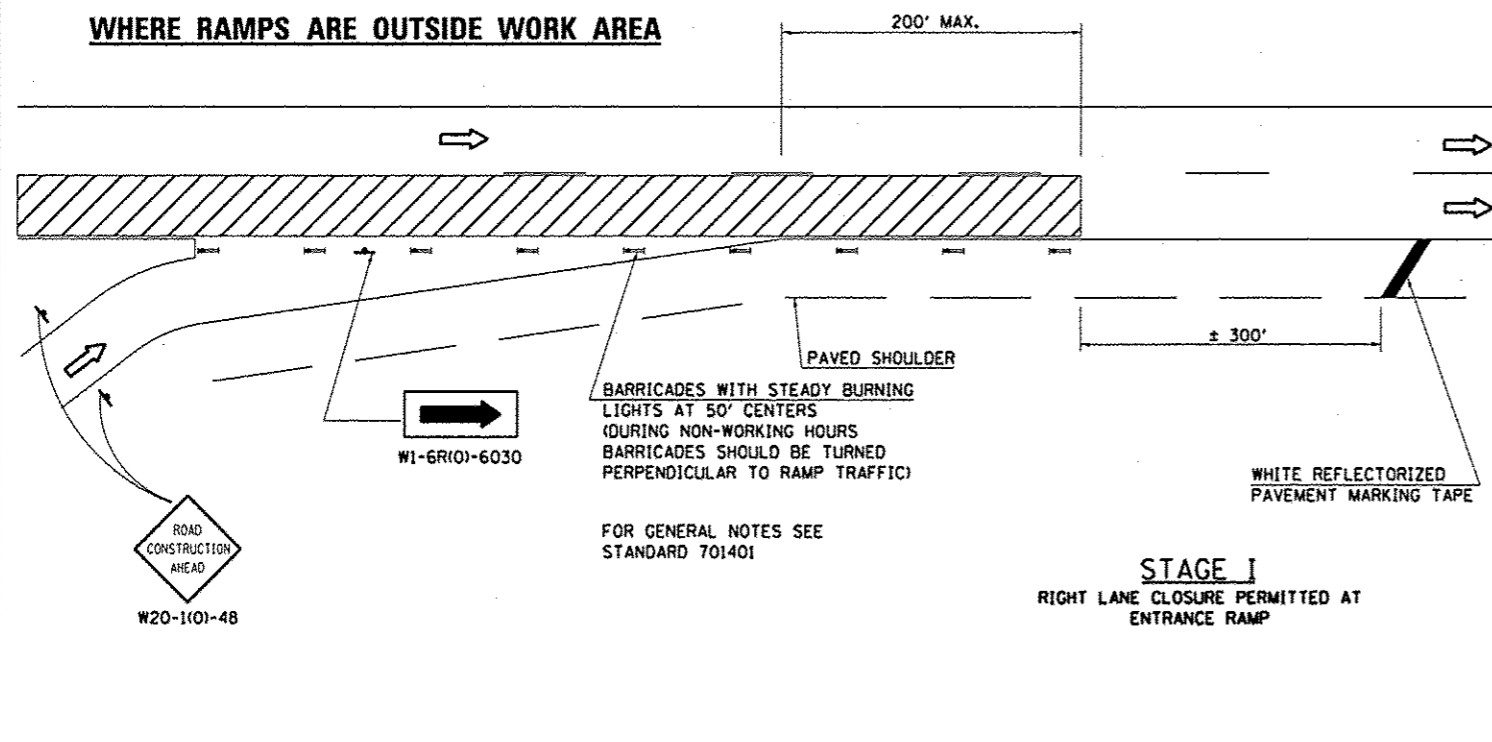


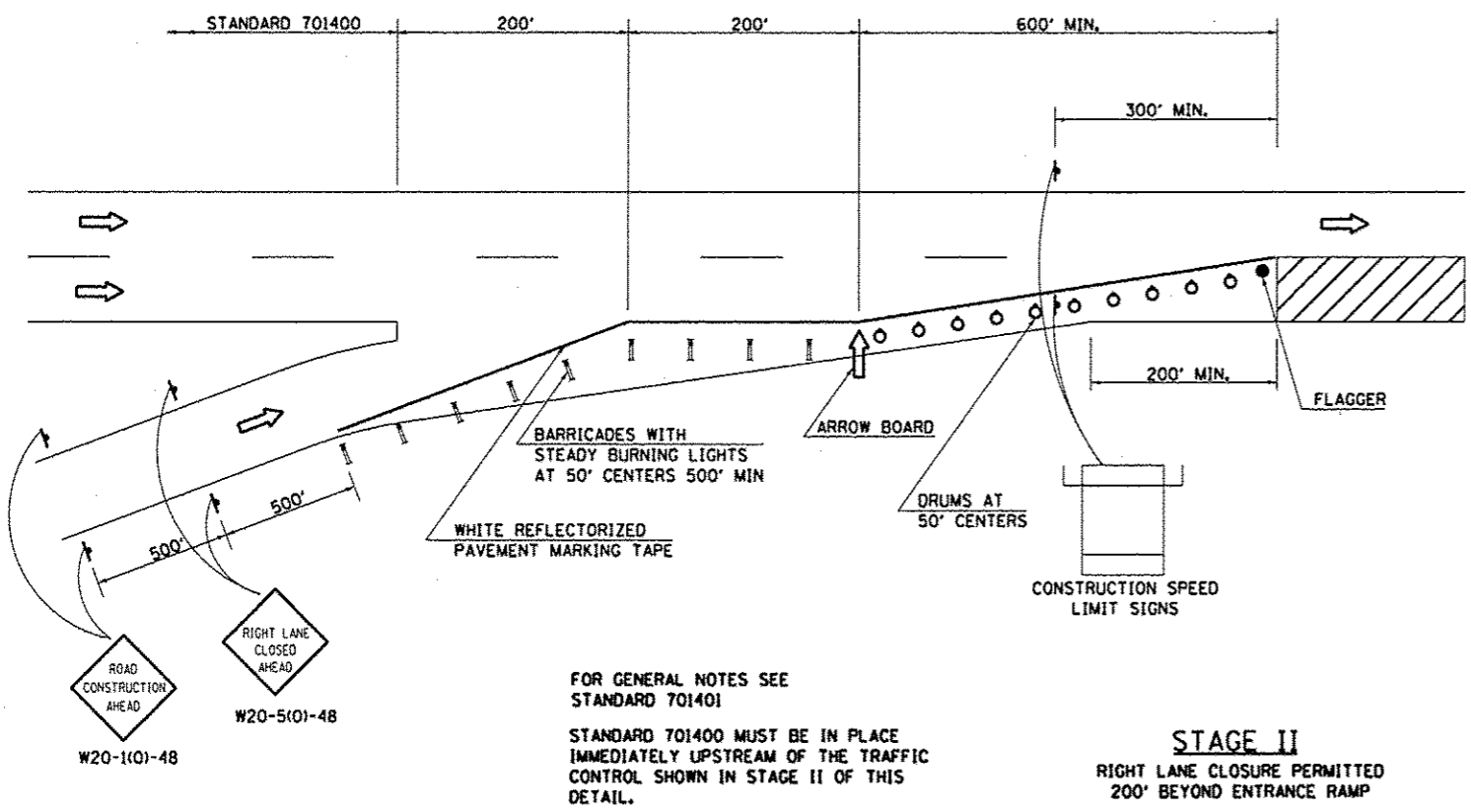
**DETAIL OF TRAFFIC CONTROL  
AT ENTRANCE RAMP**

**WHERE RAMP ARE OUTSIDE WORK AREA**



FOR GENERAL NOTES SEE STANDARD 701401

**STAGE I  
RIGHT LANE CLOSURE PERMITTED AT  
ENTRANCE RAMP**



FOR GENERAL NOTES SEE STANDARD 701401

STANDARD 701400 MUST BE IN PLACE IMMEDIATELY UPSTREAM OF THE TRAFFIC CONTROL SHOWN IN STAGE II OF THIS DETAIL.

**STAGE II  
RIGHT LANE CLOSURE PERMITTED  
200' BEYOND ENTRANCE RAMP**

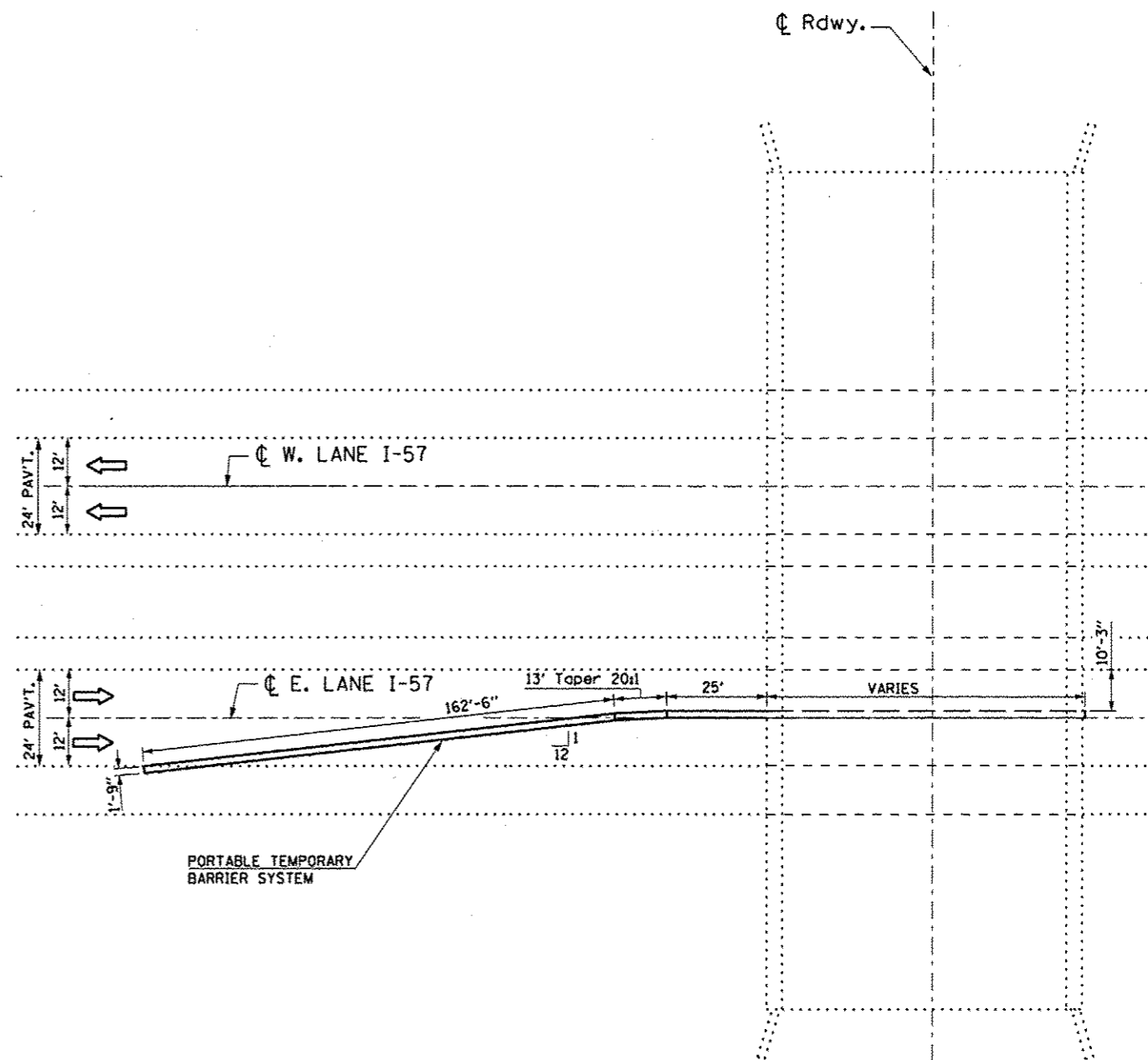
SEE TRAFFIC CONTROL AND PROTECTION STANDARD 701411 FOR DETAILS NOT SHOWN.

REVISIONS	
DRAWN	8-23-09
REVISOR	12-17-01
REVISOR	3-27-08
REVISOR	

STD. 9-43

**PORTABLE TEMPORARY BARRIER SYSTEM  
TYPICAL PLACEMENT**

NOTE: SEE TRAFFIC CONTROL AND PROTECTION, STANDARD 701402 FOR DETAILS NOT SHOWN. SEE SPECIAL PROVISIONS "PORTABLE TEMPORARY BARRIER SYSTEM" AND "LANE RENTAL".



o:\p\work\p\p\dat\gout\enrk\d0319666\7841-shr\plan.dgn
PLOT SCALE = 48,0000' / in.
PLOT DATE = 3/29/2013

DRAWN	-	REVISOR	-
CHECKED	-	REVISOR	-
DATE	-	REVISOR	-

STATE OF ILLINOIS	PORTABLE TEMPORARY BARRIER SYSTEM PLACEMENT	F.A.I. RTE.	SECTION	COUNTY	TOTAL SHEETS	SHEET NO.
DEPARTMENT OF TRANSPORTATION	ENTRANCE RAMP OUTSIDE WORK LIMITS	57	D9 BRIDGE PAINT 2013-1		23	6
SCALE: _____	SHEET _____ OF _____ SHEETS	STA. _____	TO STA. _____	CONTRACT NO. 78355		
ILLINOIS FED. AID PROJECT						

FRANKLIN & WILLIAMSON
-----------------------