

FBI ROUTE	SECTION	COUNTY
	TE-0000(156)	ST CLAIR
CONTRACT NO. 97500	ILLINOIS	
FEDERAL AID PROJECT		

THOUVENOT, WADE & MOERCHEN, INC.
ENGINEERS • SURVEYORS • PLANNERS



- CORPORATE OFFICE
4940 OLD COLLINSVILLE RD.
SWANSEA, ILLINOIS 62226
TEL (618) 624-4488
FAX (618) 624-6888
corp@twm-inc.com
- WATERLOO OFFICE
113 SOUTH MAIN STREET
WATERLOO, ILLINOIS 62298
TEL (618) 939-5050
FAX (618) 939-3938
waterloo@twm-inc.com
- EDWARDSVILLE OFFICE
600 COUNTRY CLUB VIEW, SUITE 1
EDWARDSVILLE, ILLINOIS 62025
TEL (618) 656-4040
FAX (618) 656-4343
edwardsville@twm-inc.com
- ST. LOUIS OFFICE
720 OLIVE ST., SUITE 200 A
ST. LOUIS, MISSOURI 63101
TEL (314) 241-6300
stlouis@twm-inc.com

PROFESSIONAL REGISTRATIONS	LICENSE NO.
ILLINOIS PROFESSIONAL DESIGN FIRM	184-001220
PROFESSIONAL ENGINEERING CORP.	62-033370
PROFESSIONAL STRUCTURAL ENGR. CORP.	81-005202
ILLINOIS PROF. LAND SURVEYING CORP.	048-000029
MISSOURI PROFESSIONAL ENGR. CORP.	MC 001528
MISSOURI LAND SURVEYING CORP.	MC 000346

SEAL

Signature: _____
Signature Date: _____
Expiration Date: _____

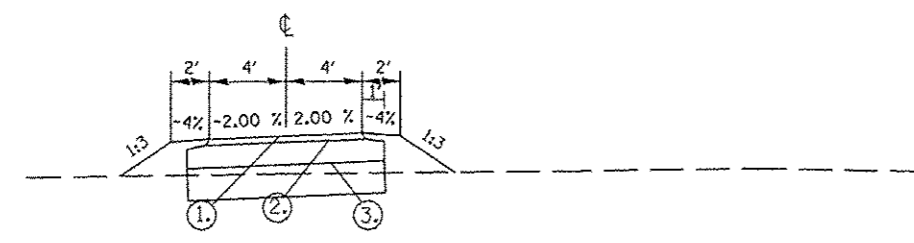
STATEMENT OF RESPONSIBILITY
I hereby confirm that the document herein is authorized by my seal is replicated to this sheet, and I hereby disclaim any responsibility for all other drawings, specifications, estimates, reports or other documents or instruments relating to or intended to be utilized for any other part of the architectural, engineering or survey project.

TITLE: SECTION 10-00032-00-8T
TYPICAL SECTIONS

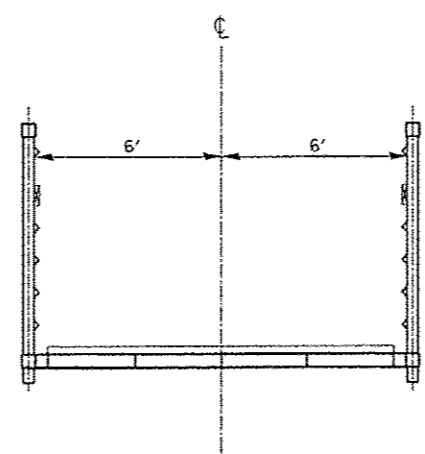
PROJECT: RICHLAND CREEK BIKE TRAIL
PHASE 2B
VILLAGE OF SWANSEA
ST CLAIR COUNTY, IL

REV.	DATE	DESCRIPTION
△		
△		
△		

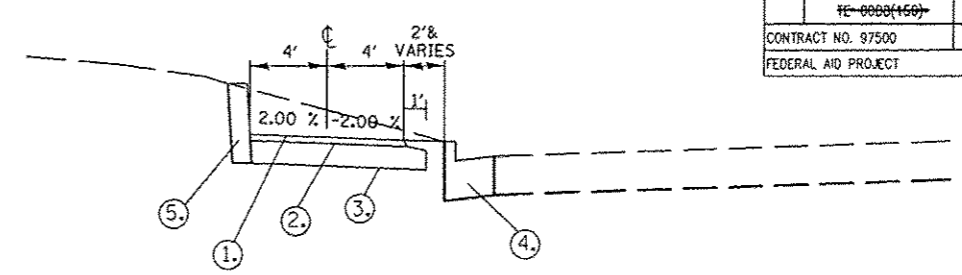
DRAWN BY: JVV	SHEET
DESIGNED BY: JVV	5
CHECKED BY: MJK	OF 46 SHEETS
APPROVED BY: JVV	PROJECT DESCRIPTION
PROJECT NUMBER: M19100072A	
ISSUED FOR REVIEW	ISSUED FOR BIDDING
ISSUED FOR CONSTR.	RECORD DRAWING



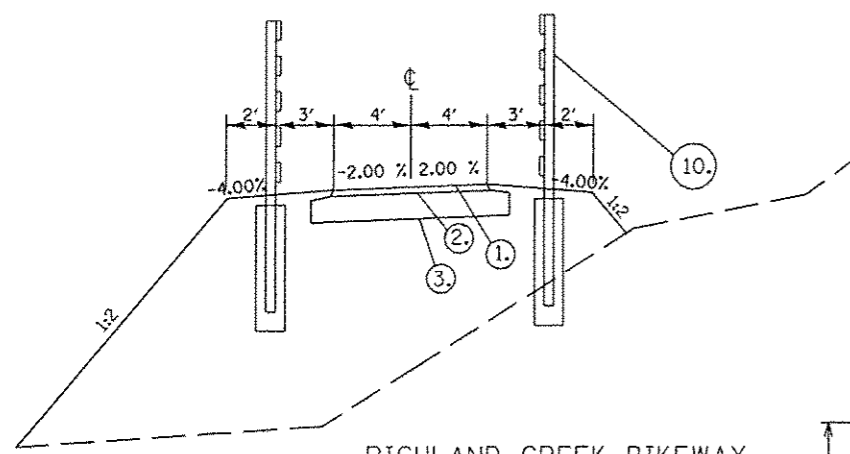
RICHLAND CREEK BIKEWAY
STA. 27+35.19 TO STA. 29+97.27
STA. 46+10.02 TO STA. 48+92.85



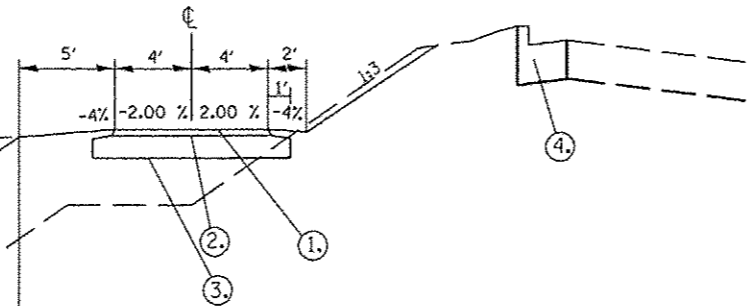
RICHLAND CREEK BIKEWAY
STA. 30+62.82 TO STA. 31+53.99



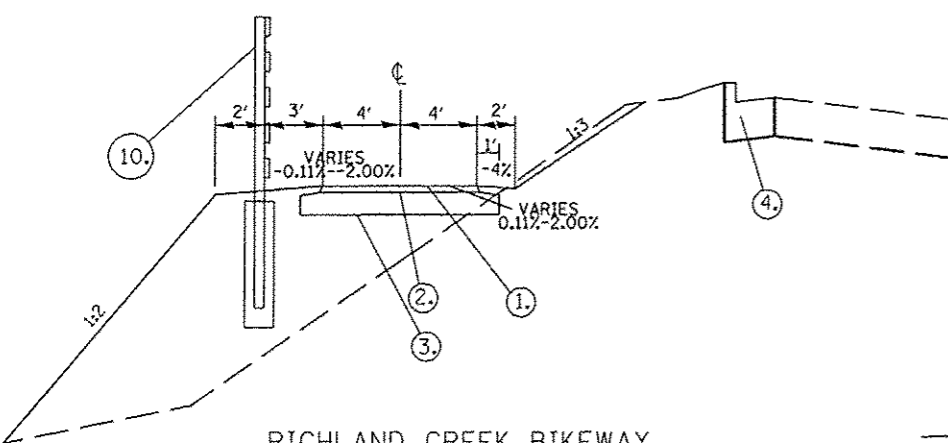
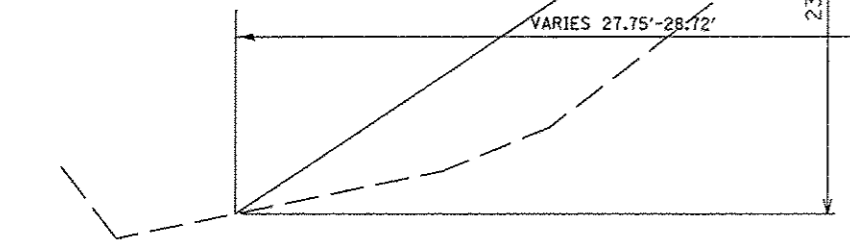
RICHLAND CREEK BIKEWAY
STA. 36+22.68 TO STA. 37+35.12
STA. 37+87.09 TO STA. 38+59.58



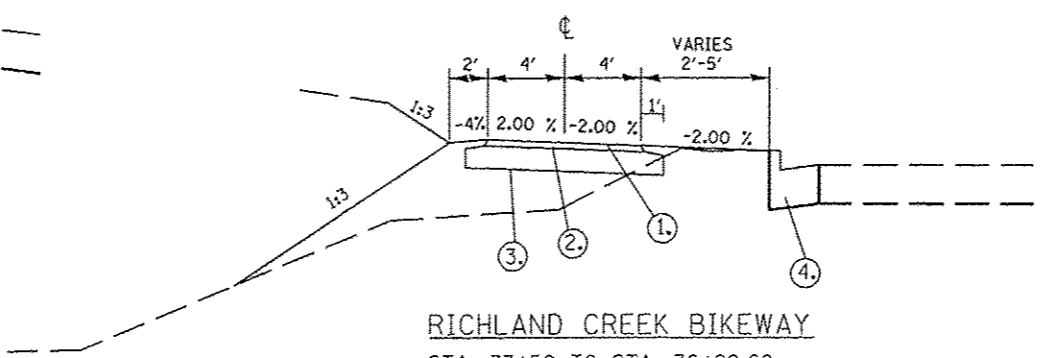
RICHLAND CREEK BIKEWAY
STA. 29+97.27 TO STA. 30+62.82
STA. 31+53.99 TO STA. 31+65.84



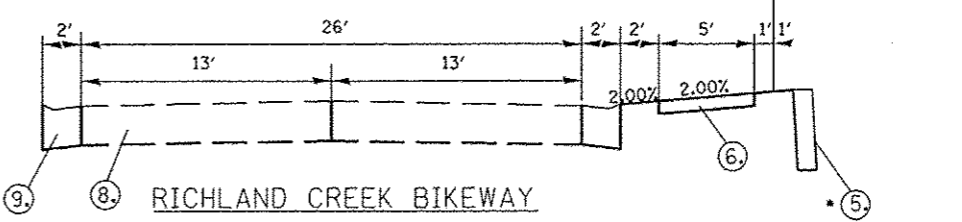
RICHLAND CREEK BIKEWAY
STA. 32+58.37 TO STA. 33+50.00



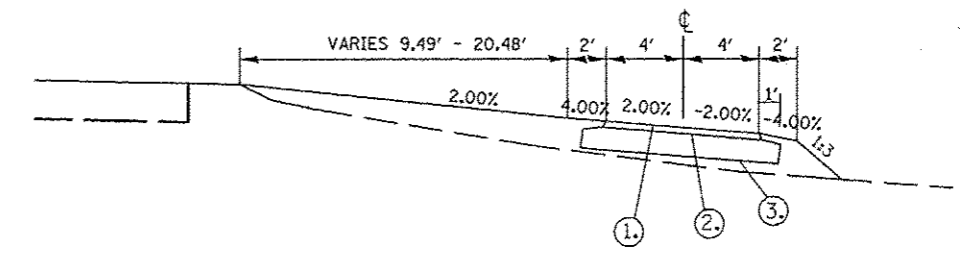
RICHLAND CREEK BIKEWAY
STA. 31+65+84 TO STA. 32+58.37



RICHLAND CREEK BIKEWAY
STA. 33+50 TO STA. 36+22.68
STA. 37+35.12 TO STA. 37+87.09
STA. 38+59.58 TO STA. 38+68.23
STA. 39+41.97 TO STA. 41+11.09



RICHLAND CREEK BIKEWAY
STA. 42+85.16 TO STA. 46+10.02
*RETAINING WALL STA. 45+33.20 TO STA. 46+04.64



RICHLAND CREEK BIKEWAY
STA. 49+17.95 TO STA. 52+56.68

LEGEND

- ① HMA SURFACE COURSE, MIX "C", N70-2"
- ② AGGREGATE BASE COURSE, TYPE A- 8"
- ③ COMPACTED EARTH SUBGRADE
- ④ EXISTING B-6.24 CONCRETE CURB AND GUTTER
- ⑤ SEGMENTAL CONCRETE BLOCK WALL
- ⑥ PCC SIDEWALK, 4"
- ⑦ CHAIN LINK FENCE (SPECIAL)
- ⑧ EXISTING OIL AND CHIP PAVEMENT
- ⑨ EXISTING MOUNTABLE CURB AND GUTTER
- ⑩ WOOD POST AND RAIL FENCE

P:\000220\00032\0008T\00032-00-8T.dwg 9/05/2012 1:55pm