

FAI ROUTE	SECTION	COUNTY
1E-0008(106)	1E-0008(106)	ST CLAIR
CONTRACT NO. 97500		ILLINOIS
FEDERAL AID PROJECT		

**THOUVENOT, WADE & MOERCHEN, INC.**  
ENGINEERS • SURVEYORS • PLANNERS



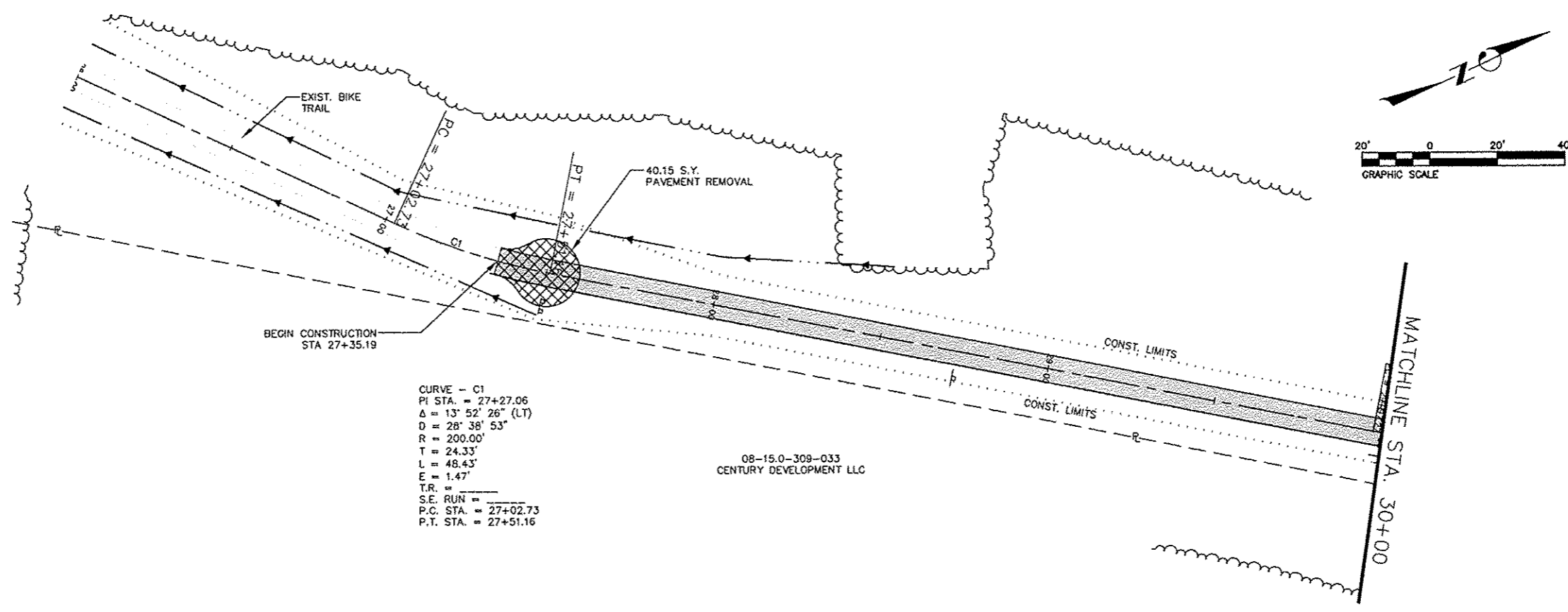
- CORPORATE OFFICE**  
4940 OLD COLLINSVILLE RD.  
SWANSEA, ILLINOIS 62226  
TEL (618) 624-4488  
FAX (618) 624-6688  
corp@twm-inc.com
- WATERLOO OFFICE**  
118 EAST THIRD STREET  
WATERLOO, ILLINOIS 62298  
TEL (618) 939-5050  
FAX (618) 939-3938  
X waterloo@twm-inc.com
- ST. LOUIS OFFICE**  
1001 CRAIG ROAD, SUITE 260  
ST. LOUIS, MISSOURI 63146  
TEL (314) 236-5052  
FAX (314) 872-2194  
stlouis@twm-inc.com

PROFESSIONAL REGISTRATIONS	LICENSE NO.
ILLINOIS PROFESSIONAL DESIGN FIRM	194-001220
PROFESSIONAL ENGINEERING CORP.	62-055370
PROFESSIONAL STRUCTURAL ENGR. CORP.	61-005202
ILLINOIS PROF. LAND SURVEYING CORP.	048-000029
MISSOURI PROFESSIONAL ENGR. CORP.	MC 001528
MISSOURI LAND SURVEYING CORP.	MC 000246

SEAL

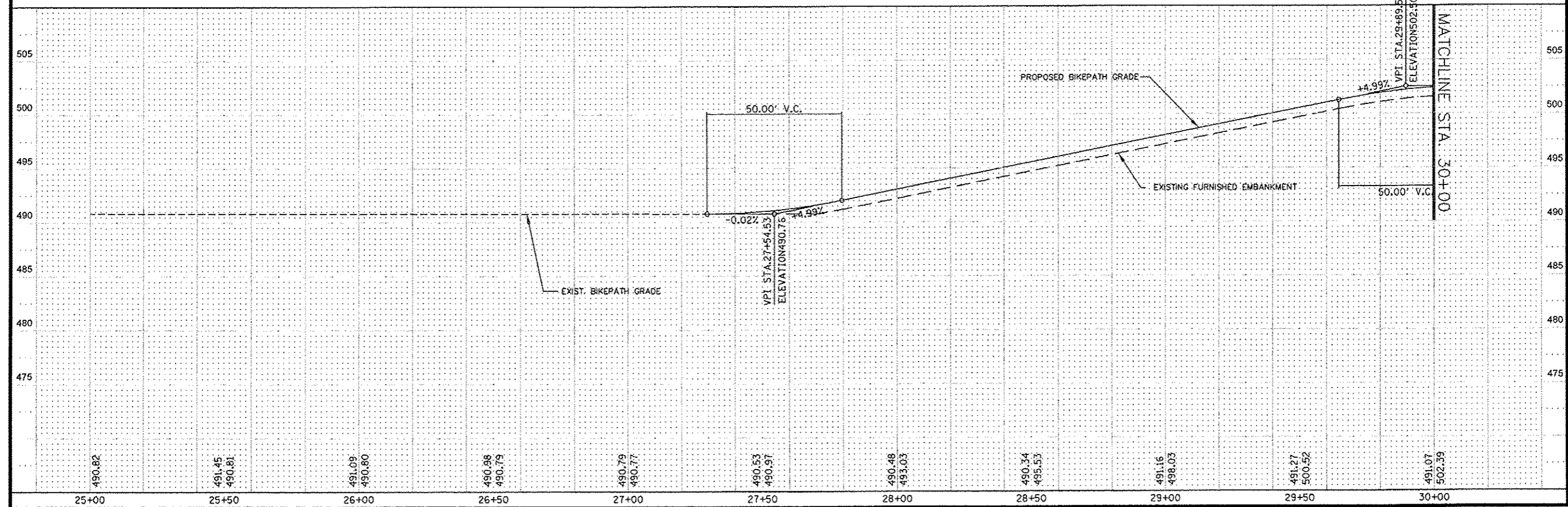
Signature: \_\_\_\_\_  
Signature Date: \_\_\_\_\_  
Expiration Date: \_\_\_\_\_

**STATEMENT OF RESPONSIBILITY**  
I hereby confirm that the document herein to be authorized by my seal is restricted to this sheet, and I hereby disclaim any responsibility for all other drawings, specifications, estimates, reports or other documents or instruments relating to or intended to be utilized for any other part of the architectural, engineering or survey project.



CURVE - C1  
PI STA. = 27+27.06  
Δ = 13° 52' 26" (LT)  
D = 28° 38' 53"  
R = 200.00'  
T = 24.33'  
L = 48.43'  
E = 1.47'  
T.R. = \_\_\_\_\_  
S.E. RUN = \_\_\_\_\_  
P.C. STA. = 27+02.73  
P.T. STA. = 27+51.16

08-15.0-309-033  
CENTURY DEVELOPMENT LLC



**PLAN AND PROFILE**  
STA. 27+35.19 TO STA. 30+00  
SECTION 10-00032-00-BT  
PROJECT: RICHLAND CREEK BIKE TRAIL  
PHASE 2B  
VILLAGE OF SWANSEA  
ST CLAIR COUNTY, IL

REV	DATE	DESCRIPTION
△		
△		
△		

DRAWN BY: JJV	SHEET
DESIGNED BY: JJV	6
CHECKED BY: MJK	
APPROVED BY: JJV	
PROJECT NUMBER: M19100072A	OF 46 SHEETS
<input type="checkbox"/> ISSUED FOR REVIEW	<input type="checkbox"/> ISSUED FOR BIDDING
<input type="checkbox"/> ISSUED FOR CONSTR.	<input type="checkbox"/> RECORD DRAWING