

FBI ROUTE	SECTION	COUNTY
	1E-0008(156)	ST. CLAIR
CONTRACT NO. 97500	ILLINOIS	
FEDERAL AID PROJECT		

**THOUVENOT, WADE & MOERCHEN, INC.**  
ENGINEERS • SURVEYORS • PLANNERS



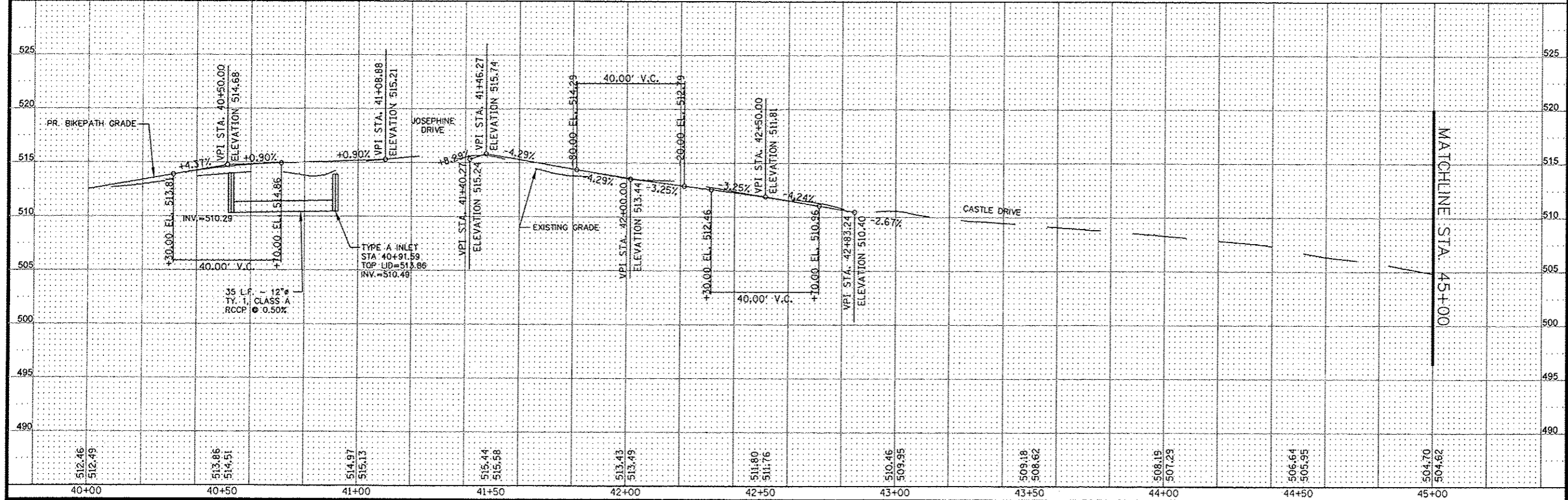
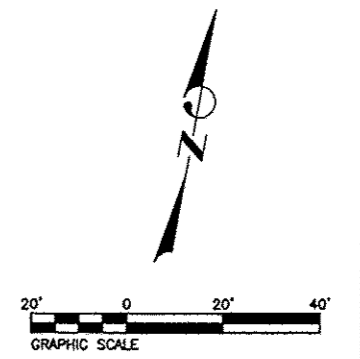
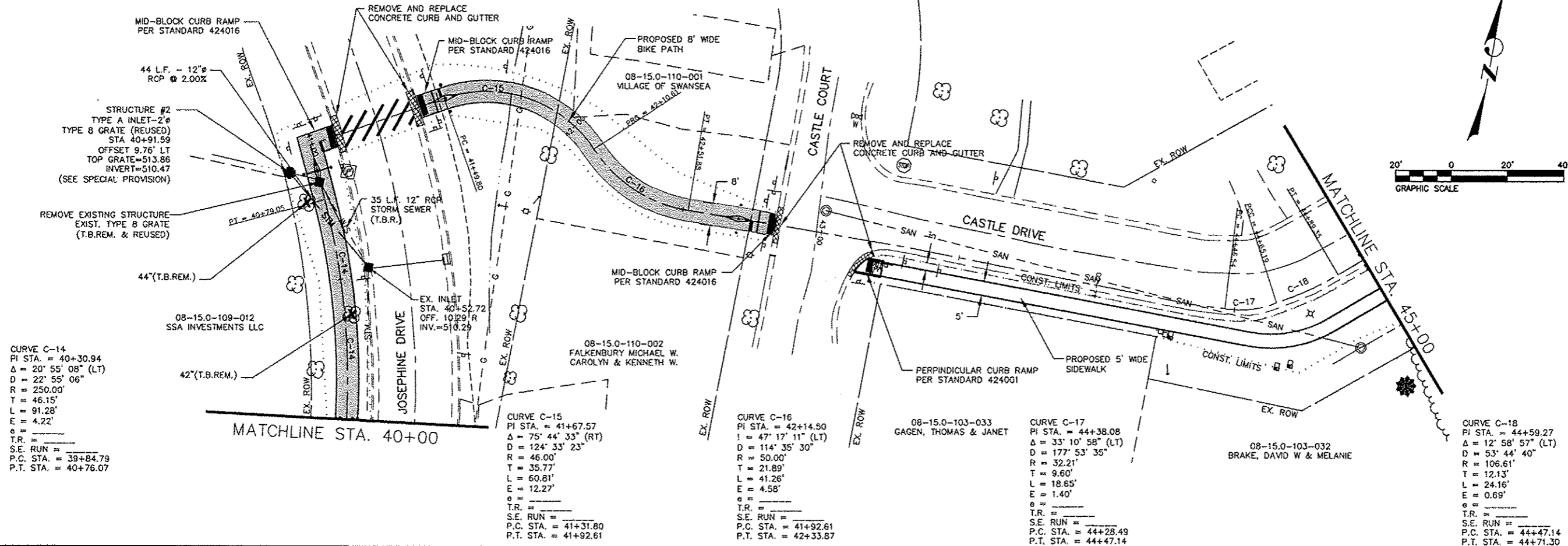
- CORPORATE OFFICE**  
4940 OLD COLLINSVILLE RD.  
SWANSEA, ILLINOIS 62226  
TEL (618) 624-4488  
FAX (618) 624-6688  
corp@twm-inc.com
- WATERLOO OFFICE**  
118 EAST THIRD STREET  
WATERLOO, ILLINOIS 62298  
TEL (618) 939-5050  
FAX (618) 939-3938  
waterloo@twm-inc.com
- ST. LOUIS OFFICE**  
1001 CRAIG ROAD, SUITE 260  
ST. LOUIS, MISSOURI 63146  
TEL (314) 236-5052  
FAX (314) 872-2194  
stlouis@twm-inc.com

PROFESSIONAL REGISTRATIONS	LICENSE NO.
ILLINOIS PROFESSIONAL DESIGN FIRM	184-001220
PROFESSIONAL ENGINEERING CORP.	62-035370
PROFESSIONAL STRUCTURAL ENGR. CORP.	81-005202
ILLINOIS PROF. LAND SURVEYING CORP.	948-000029
MISSOURI PROFESSIONAL ENGR. CORP.	NC 001528
MISSOURI LAND SURVEYING CORP.	NC 000346

SEAL

Signature: \_\_\_\_\_  
Signature Date: \_\_\_\_\_  
Expiration Date: \_\_\_\_\_

**STATEMENT OF RESPONSIBILITY**  
I hereby certify that the document herein to be authorized by my seal is restricted to this sheet, and I hereby disclaim any responsibility for all other drawings, specifications, submittals, reports or other documents or instruments relating to or intended to be utilized for any other part of the architectural, engineering or survey project.



**PLAN AND PROFILE**  
STA. 40+00 - STA. 45+00  
SECTION 10-00032-00-BT

PROJECT: RICHLAND CREEK BIKE TRAIL  
PHASE 2B  
VILLAGE OF SWANSEA  
ST. CLAIR COUNTY, IL

REV.	DATE	DESCRIPTION
1		
2		
3		
4		

DRAWN BY: JJV	SHEET
DESIGNED BY: JJV	9
CHECKED BY: MJR	
APPROVED BY: JJV	
PROJECT NUMBER: 10-00032-00-BT	OF 46 SHEETS
<input type="checkbox"/> ISSUED FOR CONSTRUCTION <input type="checkbox"/> RECORD DRAWING	