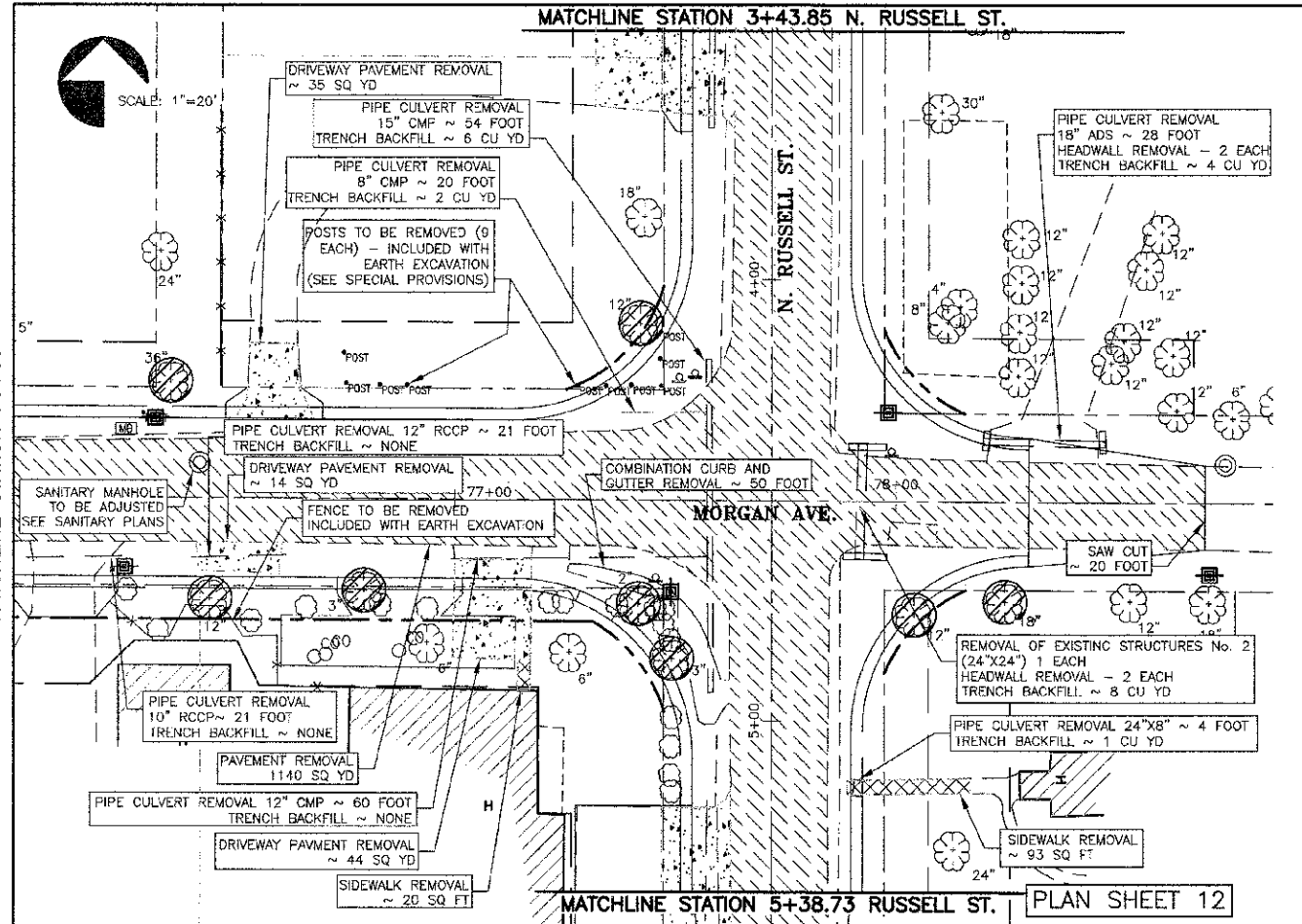
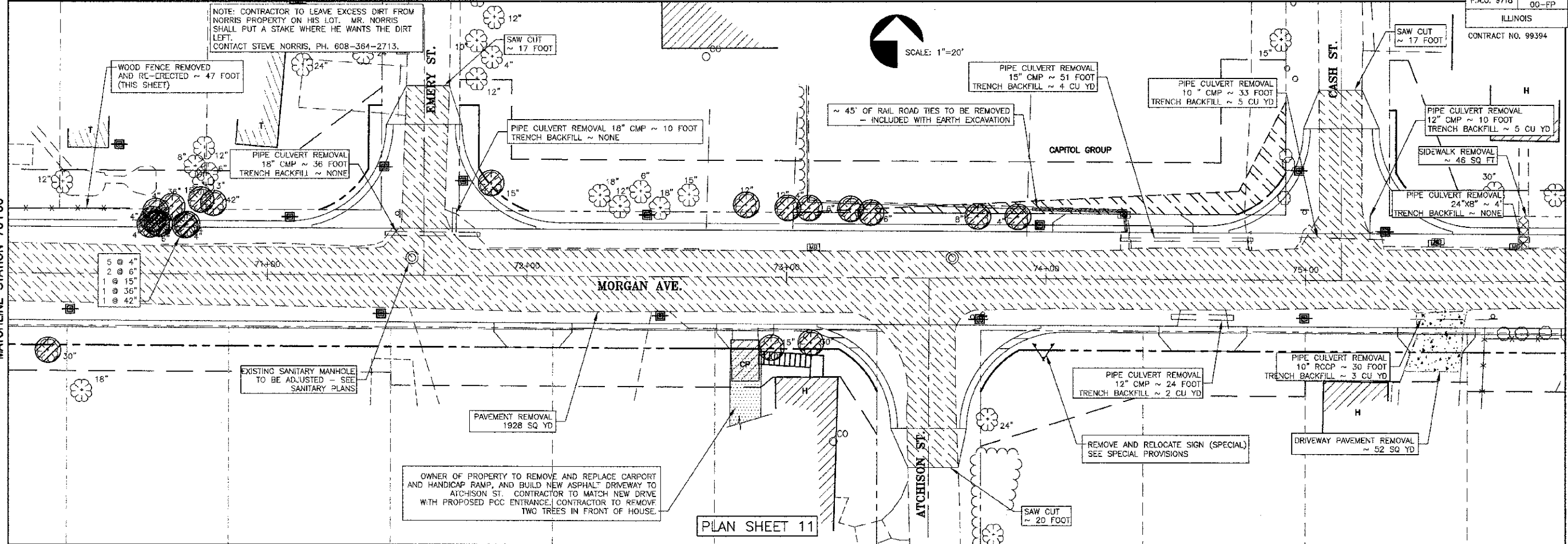


CONTRACT NO. 99394



TREE REMOVAL (MORGAN)			
STATION	OFFSET	6"-15"	OVER 15"
60+35	60 L	12	
60+72	28 L		24
60+93	52 R		30
<b>TOTAL PLAN SHEET 9</b>			
64+14	43 L	4	
67+16	23 L	6	
67+28	21 L	6	
67+33	21 L	6	
67+42	20 L	6	
67+95	33 L		48
68+12	32 L		30
69+14	31 L	6	
69+13	33 L	6	
69+58	52 R		18
69+59	19 R	15	
<b>TOTAL PLAN SHEET 10</b>			
70+16	30 R		30
70+55	19 L	4	
70+56	21 L	4	
70+57	24 L	4	
70+57	20 L	6	
70+58	19 L	6	
70+63	26 L		36
70+68	19 L	4	
70+74	29 L	15	
70+79	27 L		42
71+86	36 L	15	
72+84	28 L	12	
72+94	27 R	15	
73+00	27 L	12	
73+09	27 R	4	
73+25	26 L	6	30
73+32	25 L	6	
73+74	24 L	8	
73+89	24 L	4	
<b>TOTAL PLAN SHEET 11</b>			
76+36	26 L		36
76+45	23 R	12	
76+80	21 R	3	
77+42	40 L	12	
77+42	24 R	2	
77+49	36 R	3	
78+04	26 R	12	
78+25	23 R		18
<b>TOTAL PLAN SHEET 12</b>			
<b>TOTALS</b>		200	342

PIPE CULVERT REMOVAL				
STATION	OFFSET	SIZE/TYPE	LENGTH	TRENCH BACKFILL
63+75	17 L	24"/ADS	21'	9 C.Y.
<b>TOTAL PLAN SHEET 9</b>				
64+15	AR	36"/ADS	38'	27 C.Y.
64+50	22 L	18"/ADS	22'	4 C.Y.
64+93	21 L	10"/RCCP	4'	1 C.Y.
67+02	17 L	12"/CMP	20'	NONE
67+52	17 L	15"/RCCP	13'	NONE
68+89	18 L	30"/RCCP	18'	9 C.Y.
69+38	15 R	24x18"/CMP AR	27'	4 C.Y.
69+50	18 L	30"/RCCP	26'	12 C.Y.
69+96	18 L	24"/ADS	7'	2 C.Y.
<b>TOTAL PLAN SHEET 10</b>				
71+63	16 L	18"/CMP	36'	NONE
71+72	17 L	18"/CMP	10'	NONE
74+54	15 L	15"/CMP	51'	4 C.Y.
74+60	14 R	12"/CMP	24'	2 C.Y.
75+14	16 L	10"/CMP	33'	5 C.Y.
75+56	15 R	10"/RCCP	30'	NONE
75+24	16 L	12"/CMP	10'	3 C.Y.
75+84	16 L	24"x8"	4'	NONE
<b>TOTAL PLAN SHEET 11</b>				
76+14	14 R	10"/RCCP	21'	NONE
76+51	13 R	12"/RCCP	21'	NONE
77+28	13 R	12"/CMP	60'	NONE
77+47	20 L	8"/CMP	20'	2 C.Y.
77+58	AR	15"/CMP	54'	6 C.Y.
77+91	65 R	24"x8"	4'	8 C.Y.
78+33	13 L	18"/ADS	28'	4 C.Y.
<b>TOTAL PLAN SHEET 12</b>				
<b>TOTALS (MORGAN STREET)</b>			844'	223 C.Y.

PIPE CULVERT REMOVAL, 24" RCCP				
STATION	OFFSET	SIZE/TYPE	LENGTH	TRENCH BACKFILL
60+16	14 L	24"/RCCP	8'	4 C.Y.
61+95	9 L	24"/RCCP	34'	10 C.Y.
63+01	13 L	24"/ADS	48'	23 C.Y.
<b>TOTAL PLAN SHEET 9</b>				
			263'	37 C.Y.

STORM SEWER REMOVAL, 24" RCCP				
STATION	OFFSET	SIZE/TYPE	LENGTH	TRENCH BACKFILL
61+15	8 L	24"/RCCP	152'	84 C.Y.
<b>TOTAL PLAN SHEET 9</b>				
			263'	84 C.Y.

LEGEND	
	DRIVEWAY REMOVAL (PAID AS EARTH EXCAVATION)
	DRIVEWAY PAVEMENT REMOVAL (SEE SCHEDULE SHEET 6)
	PAVEMENT REMOVAL
	FLARED END SECTION TO BE REMOVED (SEE SPECIAL PROVISIONS)

NOTE: TREES LESS THAN 6" SHOWN TO BE REMOVED SHALL NOT BE PAID FOR SEPARATELY, BUT SHALL BE INCLUDED WITH EARTH EXCAVATION.

NOTE: FOR ALL UTILITIES SEE SHEETS 46-49.

STATE OF ILLINOIS PROFESSIONAL DESIGN FIRM LICENSE NO. 184-004515

© 2013 ALL RIGHTS RESERVED

**CLARIDA & ZIEGLER ENGINEERING CO.**  
 308 South Court St, P.O. Box 937  
 Marion, Illinois 62959  
 Phone - (618)993-8411, Fax - (618)993-6750

REMOVALS  
 MORGAN AVE IMPROVEMENTS  
 MARION, ILLINOIS

REVISIONS	DATE	NO.

Date: 2/27/13 DR. By: TW CK'D By: HGC  
 Scale: 1"=20' Job No. Q8155 Sheet No. 06 of 45