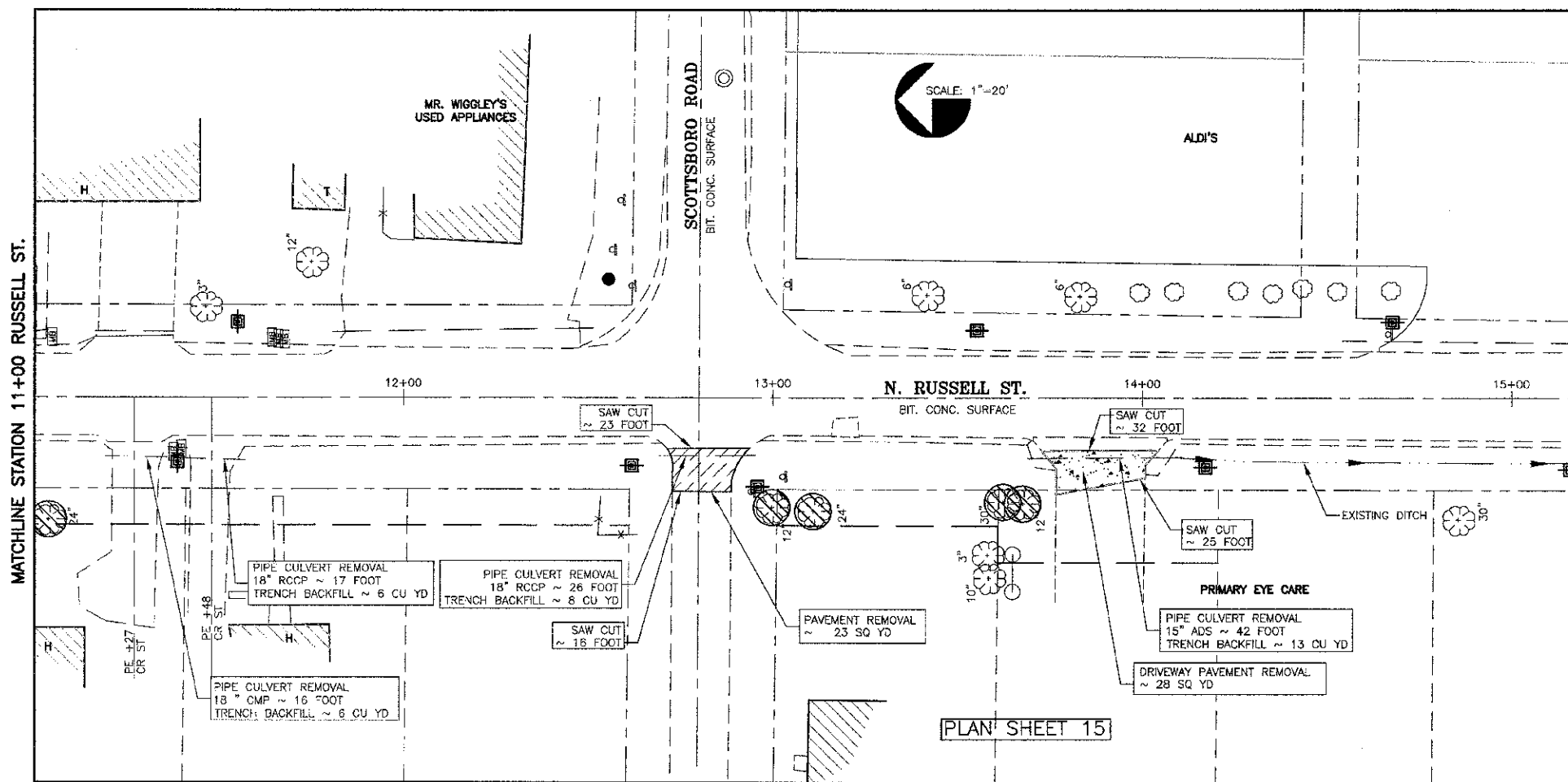


ROUTE NO.	SECTION	COUNTY	TOTAL SHEETS	SHEET NO.
F.A.U. 9718	08-00105-00-FP	WILLIAMSON	45	08
ILLINOIS		MORGAN ST.		

CONTRACT NO. 99394



**TREE REMOVALS (RUSSELL)**

STATION	OFFSET	6"-15"	OVER 15"
<b>TOTAL SHEET 13</b>			
5+73	23 R	12	
5+91	22 L	12	
6+57	23 L		18
7+51	25 L		18
7+53	30 R		36
8+93	34 R		24
9+95	34 R		18
<b>TOTAL SHEET 14</b>			
11+04	33 R		24
13+00	30 R	12	
13+11	31 R		24
13+82	28 R		30
13+88	29 R	12	
<b>TOTAL SHEET 15</b>			
		24	78

- NOTES:
- TREES LESS THAN 6" SHOWN TO BE REMOVED SHALL NOT BE PAID FOR SEPARATELY, BUT SHALL BE INCLUDED WITH EARTH EXCAVATION.
  - LILAC BUSHES RIGHT OF STATION 10+20 AND 10+70 TO BE REMOVED. COST TO BE INCLUDED WITH EARTH EXCAVATION.
  - CONTRACTOR TO REMOVE STUMP AND DEAD TREE RIGHT OF STATION 11+25±. COST TO BE INCLUDED WITH EARTH EXCAVATION.

**PIPE CULVERT REMOVAL**

STATION	OFFSET	SIZE/TYPE	LENGTH	TRENCH BACKFILL
2+00	20' L	15" ADS	163'	21 C.Y.
2+43	15' R	15" RCCP	29'	5 C.Y.
3+44	14' R	15" RCCP	28'	NONE
<b>TOTAL PLAN SHEET 13</b>				26 C.Y.
5+39	15' R	12" CMP	44'	4 C.Y.
6+24	15' R	12" RCCP	45'	10 C.Y.
6+76	15' R	15" RCCP	17'	4 C.Y.
6+80	18' L	18" RCCP	32'	10 C.Y.
7+83	18' L	12" CMP	34'	7 C.Y.
8+71	15' R	18" ADS	34'	NONE
8+85	17' L	12" CMP	29'	NONE
9+83	16' L	15" RCCP	20'	6 C.Y.
10+82	16' R	18" RCCP	18'	6 C.Y.
<b>TOTAL PLAN SHEET 14</b>				47 C.Y.
11+27	17' R	18" CMP	16'	6 C.Y.
11+48	17' R	18" RCCP	17'	6 C.Y.
12+80	16' R	18" RCCP	26'	8 C.Y.
13+89	17' R	15" ADS	42'	13 C.Y.
<b>TOTAL PLAN SHEET 15</b>				33 C.Y.
<b>TOTALS (RUSSELL STREET)</b>				106 C.Y.

**LEGEND**

- DRIVEWAY REMOVAL (PAID AS EARTH EXCAVATION)
- DRIVEWAY PAVEMENT REMOVAL (SEE SCHEDULE SHEET 6)
- SIDEWALK REMOVAL
- PAVEMENT REMOVAL
- FLARED END SECTION TO BE REMOVED (SEE SPECIAL PROVISIONS)

NOTE: FOR ALL UTILITIES SEE SHEETS 46-49.

STATE OF ILLINOIS PROFESSIONAL DESIGN FIRM LICENSE NO. 184-004515

© 2013 ALL RIGHTS RESERVED

**CLARIDA & ZIEGLER ENGINEERING CO.**  
 308 South Court St, P.O. Box 937  
 Marion, Illinois 62959  
 Phone - (618)993-6411, Fax - (618)993-8750

REMOVALS ALONG N. RUSSELL ST.  
 MORGAN AVE IMPROVEMENTS  
 MARION, ILLINOIS

DATE: 2/27/13 DR. BY: TW CK'D BY: HGC  
 Scale: 1"=20' Job No. 08155 Sheet No. 08 of 45