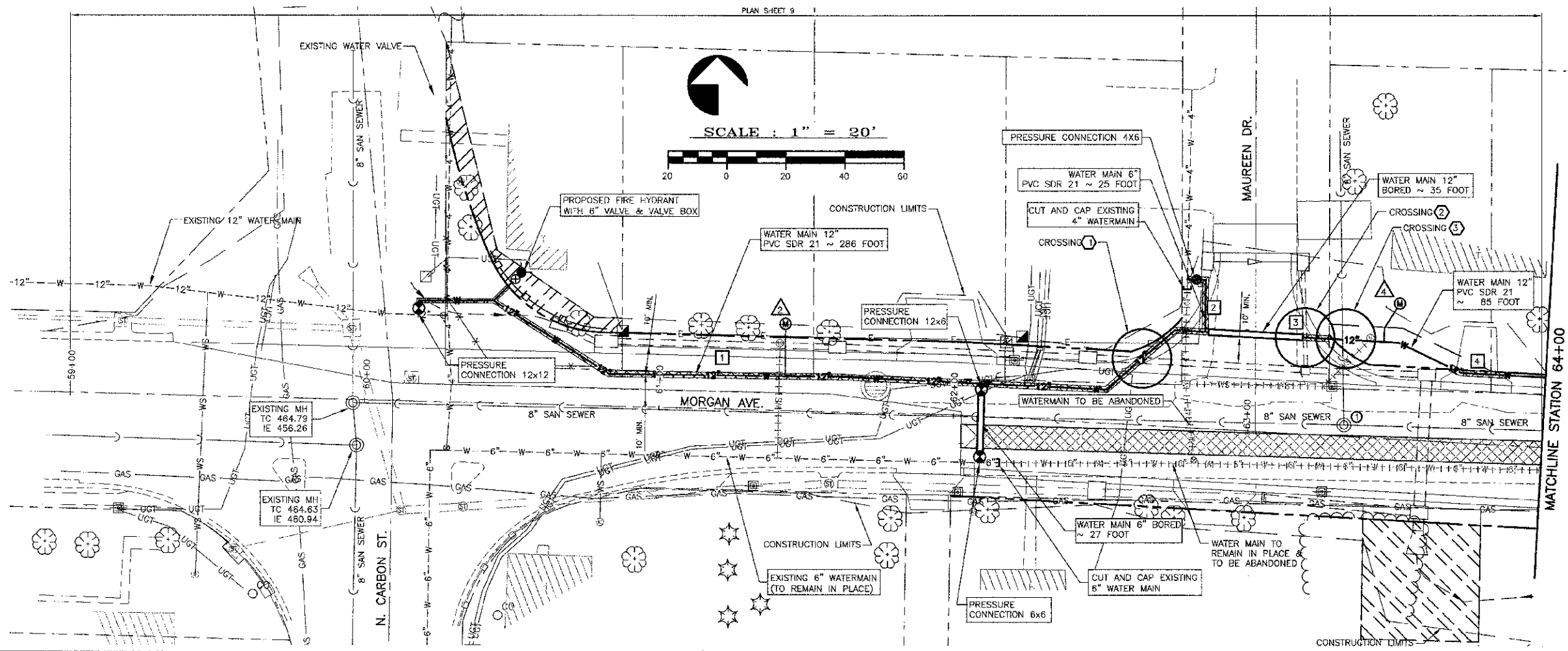


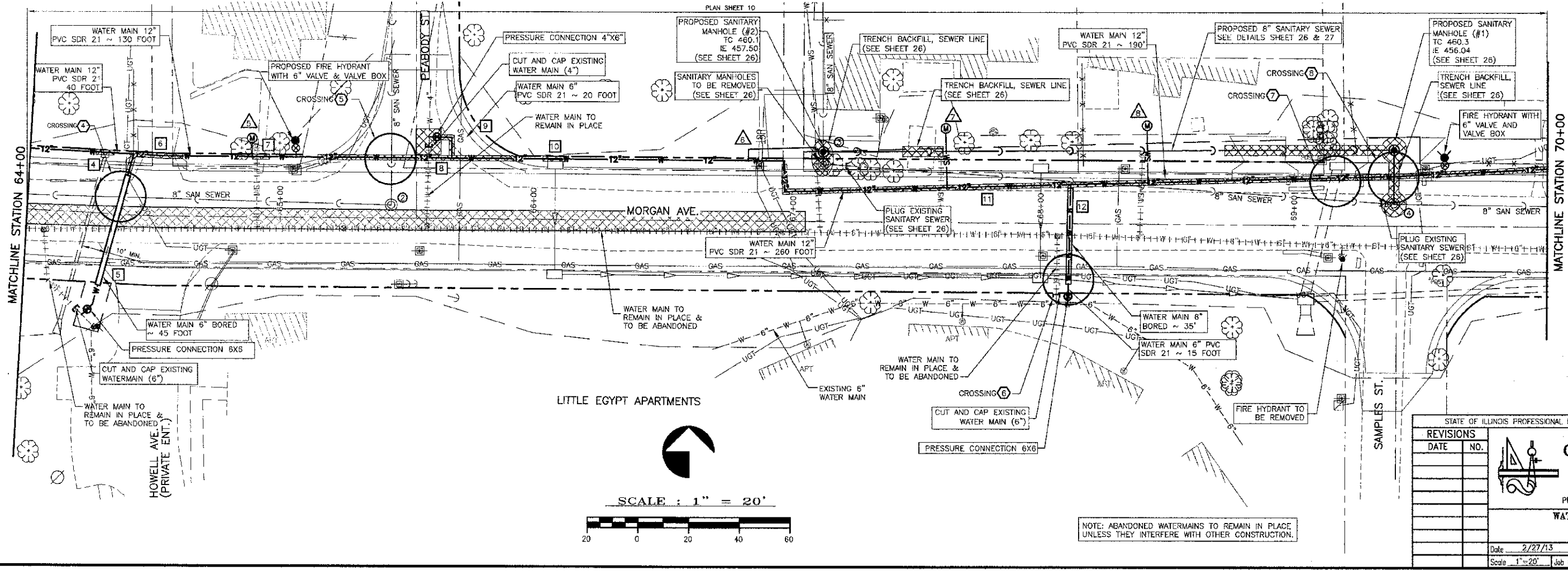
CONTRACT NO. 99394



LEGEND

- CROSSING*
- SANITARY MH TO BE ADJUSTED*
- TRENCH BACKFILL, WATERMAIN*
- WATER SERVICE *
- POWER POLE
- GUY ANCHOR
- LIGHT POLE
- ELECTRIC TRANSFORMER
- ELECTRIC PEDESTAL
- TELEPHONE PEDESTAL
- WATER VALVE
- WATER METER
- FIRE HYDRANT
- SURFACE DRAIN
- STORM INLET
- PROP. SANITARY SEWER MANHOLE
- EXIST. SANITARY SEWER MANHOLE
- SANITARY SEWER CLEAN-OUT
- GAS METER
- GAS VALVE
- GAS REGULATOR
- UNDERGROUND ELECTRIC
- UNDERGROUND TELEPHONE
- WS EXIST. WATER SERVICE LINE
- WS PROP. WATER SERVICE LINE
- W EXIST. WATER MAIN
- WATER MAIN TO BE ABANDONED
- PROP. WATER MAIN
- PROP. WATER MAIN BORED
- TRENCH BACKFILL, WATERMAIN *
- EXIST. STORM SEWER/CULVERT
- PROP. STORM SEWER
- EXIST. SANITARY SEWER
- PROP. SANITARY SEWER
- GAS UNDERGROUND GAS LINE

*SEE SCHEDULE SHEET 23



MATCHLINE STATION 70+00

STATE OF ILLINOIS PROFESSIONAL DESIGN FIRM LICENSE NO. 184-004515

© 2013 ALL RIGHTS RESERVED

CLARIDA & ZIEGLER ENGINEERING CO.
 308 South Court St, P.O. Box 937
 Marion, Illinois 62959
 Phone - (618)993-6411, Fax - (618)993-6750

WATER AND SEWER PLAN
 MORGAN AVE.
 MARION, ILLINOIS

REVISIONS	DATE	NO.

Date: 2/27/13 DR. By: TW CKD By: HGC
 Scale: 1"=20' Job No.: 08155 Sheet No.: 22 of 45

NOTE: ABANDONED WATERMANS TO REMAIN IN PLACE UNLESS THEY INTERFERE WITH OTHER CONSTRUCTION.