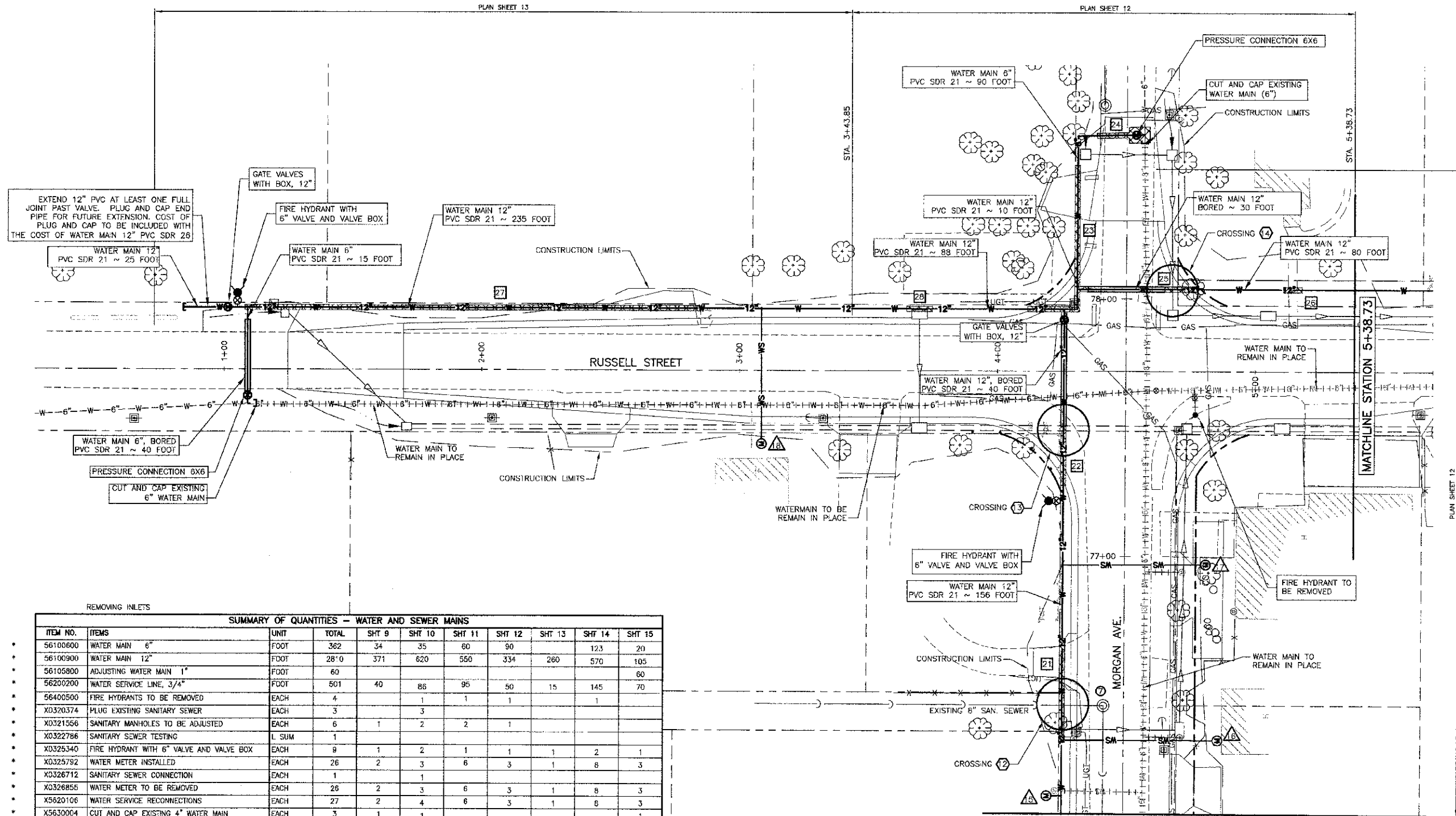
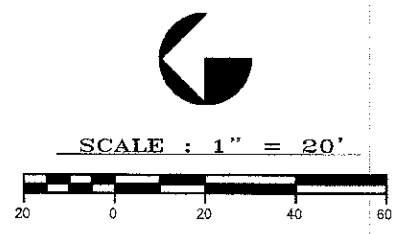


CONTRACT NO. 99394



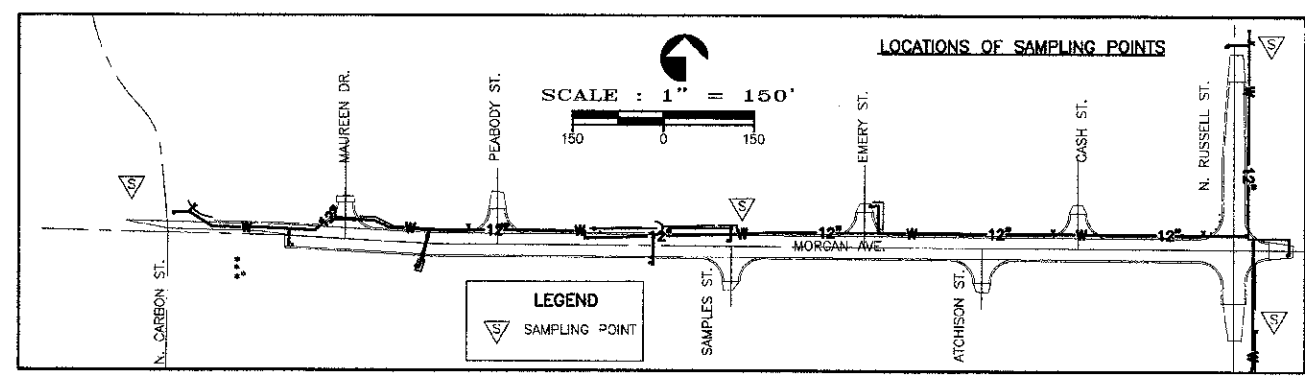
LEGEND

- CROSSING*
- SANITARY MH TO BE ADJUSTED*
- TRENCH BACKFILL, WATERMAIN*
- WATER SERVICE *
- POWER POLE
- GUY ANCHOR
- LIGHT POLE
- ELECTRIC TRANSFORMER
- ELECTRIC PEDESTAL
- TELEPHONE PEDESTAL
- WATER VALVE
- WATER METER
- FIRE HYDRANT
- SURFACE DRAIN
- STORM INLET
- PROP. SANITARY SEWER MANHOLE
- EXIST. SANITARY SEWER MANHOLE
- SANITARY SEWER CLEAN-OUT
- GAS METER
- GAS VALVE
- GAS REGULATOR
- UNDERGROUND ELECTRIC
- UGT
- EXIST. WATER SERVICE LINE
- PROP. WATER SERVICE LINE
- EXIST. WATER MAIN
- WATER MAIN TO BE ABANDONED
- PROP. WATER MAIN
- PROP. WATER MAIN BORED
- TRENCH BACKFILL, WATERMAIN *
- EXIST. STORM SEWER/CULVERT
- PROP. STORM SEWER
- EXIST. SANITARY SEWER
- PROP. SANITARY SEWER
- UNDERGROUND GAS LINE

REMOVING INLETS

SUMMARY OF QUANTITIES - WATER AND SEWER MAINS

ITEM NO.	ITEMS	UNIT	TOTAL	SHT 9	SHT 10	SHT 11	SHT 12	SHT 13	SHT 14	SHT 15
56100600	WATER MAIN 6"	FOOT	362	34	35	60	90		123	20
56100900	WATER MAIN 12"	FOOT	28'0	371	620	550	334	260	570	105
56105800	ADJUSTING WATER MAIN 1"	FOOT	60							60
56200200	WATER SERVICE LINE, 3/4"	FOOT	501	40	86	95	50	15	145	70
56400500	FIRE HYDRANTS TO BE REMOVED	EACH	4		1	1	1			1
X0320374	PLUG EXISTING SANITARY SEWER	EACH	3		3					
X0321556	SANITARY MANHOLES TO BE ADJUSTED	EACH	6	1	2	2	1			
X0322786	SANITARY SEWER TESTING	L SUM	1							
X0325340	FIRE HYDRANT WITH 6" VALVE AND VALVE BOX	EACH	9	1	2	1	1	1	2	1
X0325792	WATER METER INSTALLED	EACH	26	2	3	6	3	1	8	3
X0326712	SANITARY SEWER CONNECTION	EACH	1		1					
X0326856	WATER METER TO BE REMOVED	EACH	26	2	3	6	3	1	8	3
X5620106	WATER SERVICE RECONNECTIONS	EACH	27	2	4	6	3	1	8	3
X5630004	CUT AND CAP EXISTING 4" WATER MAIN	EACH	3	1	1					1
X5630006	CUT AND CAP EXISTING 6" WATER MAIN	EACH	6	1	2		1	1		1
X6022810	MANHOLES, SANITARY, 4" DIA. TY 1 FR., CL. LID	EACH	2		2					
X6026054	SANITARY MANHOLES TO BE REMOVED	EACH	1		1					
XX001386	SANITARY SEWER PVC (C-900) 8"	FOOT	247		247					
XX005789	RECONNECT SANITARY SERVICE LATERAL 4"	EACH	2		2					
XX005690	DETECTION WIRE	FOOT	4530	507	821	870	614	350	1043	325
XX006537	WATER SERVICE LINE 3/4", BORED	FOOT	385			105	70	35	140	35
Z0044400	PRESSURE CONNECTION 4" X 6"	EACH	4	1	1	1				1
Z0044500	PRESSURE CONNECTION 6" X 8"	EACH	5		2		1	1		1
Z0045000	PRESSURE CONNECTION 12" X 6"	EACH	1	1						
Z0045100	PRESSURE CONNECTION 12" X 12"	EACH	1	1						
	GATE VALVES, 6", WITH VALVE BOX	EACH	1						1	
	GATE VALVES, 12", WITH VALVE BOX	EACH	3				1	1		1
	WATER MAIN 12", BORED	FOOT	230	35		60	70			65
	WATER MAIN 6", BORED	FOOT	182	27	80			40	35	
	WATER MAIN CASING, 12"	FOOT	44		44					
	WATER MAIN CASING, 18"	FOOT	274	68	70	68	68			



*SEE SCHEDULE SHEET 23

NOTE: ABANDONED WATERMAINS TO REMAIN IN PLACE UNLESS THEY INTERFERE WITH OTHER CONSTRUCTION.

STATE OF ILLINOIS PROFESSIONAL DESIGN FIRM LICENSE NO. 184-004615

© 2013 ALL RIGHTS RESERVED

CLARIDA & ZIEGLER ENGINEERING CO.
 308 South Court St, P.O. Box 937
 Marion, Illinois 62959
 Phone: (618)983-6411, Fax: (618)993-6750

WATER AND SEWER PLAN
MORGAN AVE.
MARION, ILLINOIS

Date: 2/27/13 DR. By: TW CK'D By: HGC
 Scale: 1"=20' Job No.: 08155 Sheet No.: 24 of 45

* SEE SPECIAL PROVISIONS