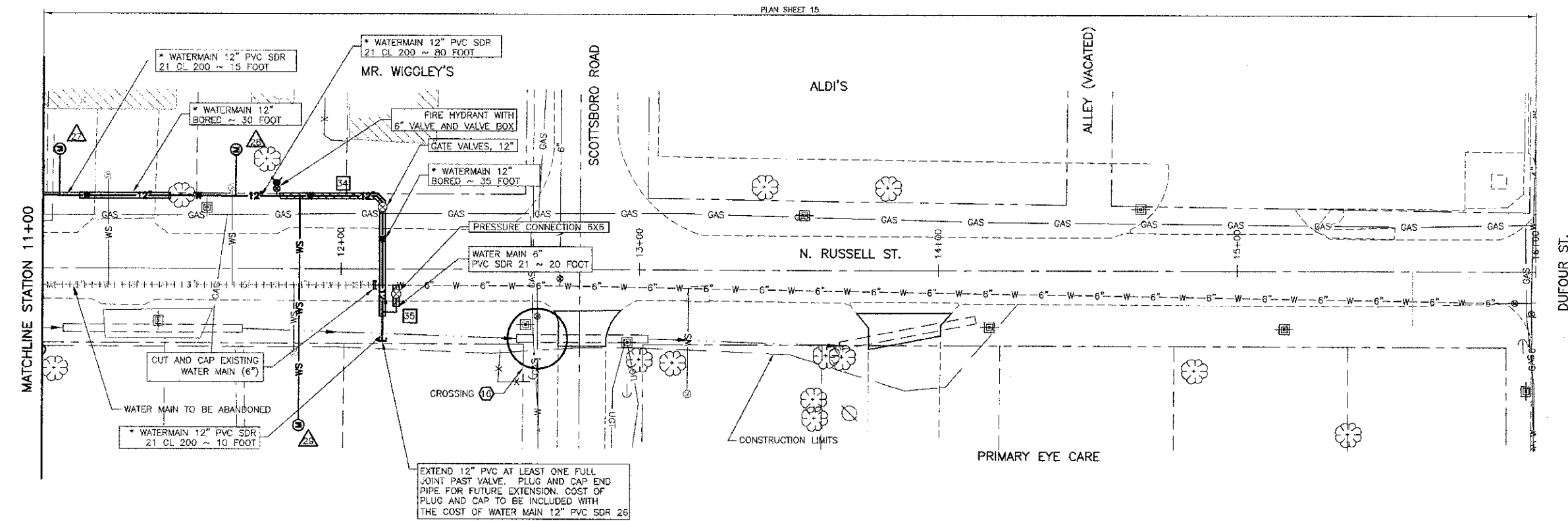
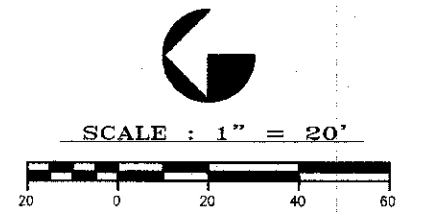
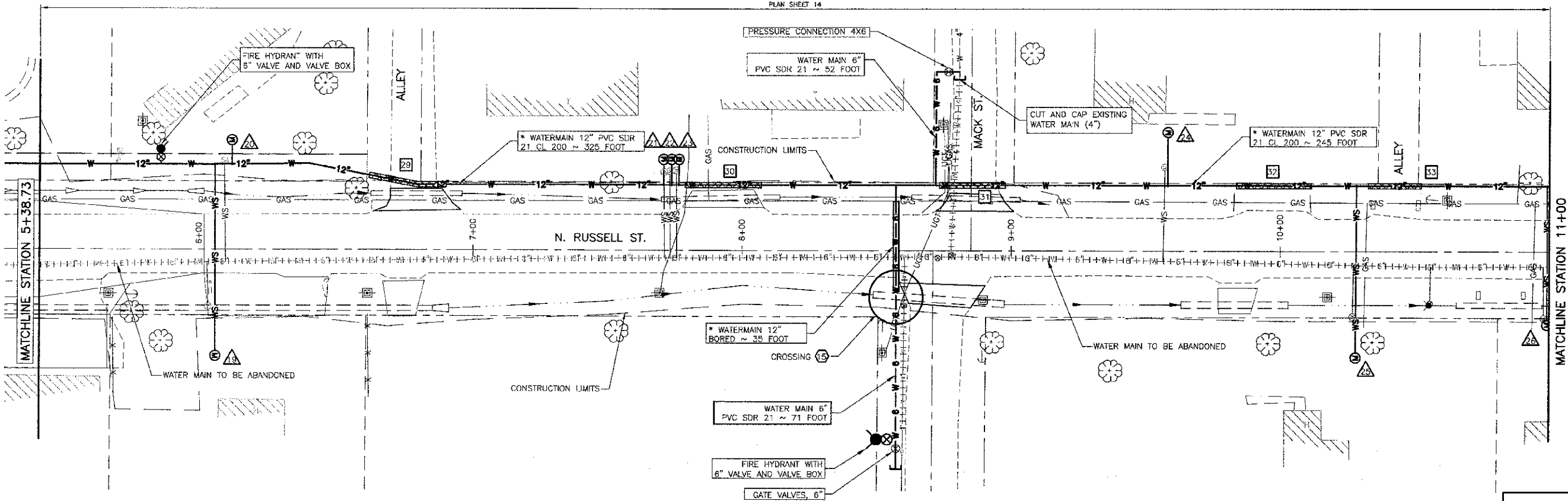


ROUTE NO.	SECTION	COUNTY	TOTAL SHEETS	SHEET NO.
F.A.U. 9718	08-00105-00-FP	WILLIAMSON	45	25
ILLINOIS		MORGAN ST.		

CONTRACT NO. 99394

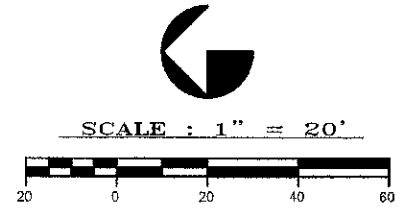


**LEGEND**

- CROSSING\*
- SANITARY MH TO BE ADJUSTED\*
- TRENCH BACKFILL, WATERMAIN\*
- WATER SERVICE \*
- POWER POLE
- GUY ANCHOR
- LIGHT POLE
- ELECTRIC TRANSFORMER
- ELECTRIC PEDESTAL
- TELEPHONE PEDESTAL
- WATER VALVE
- WATER METER
- FIRE HYDRANT
- SURFACE DRAIN
- STORM INLET
- PROP. SANITARY SEWER MANHOLE
- EXIST. SANITARY SEWER MANHOLE
- SANITARY SEWER CLEAN-OUT
- GAS METER
- GAS VALVE
- GAS REGULATOR
- UNDERGROUND ELECTRIC
- UGT UNDERGROUND TELEPHONE
- WS EXIST. WATER SERVICE LINE
- WS PROP. WATER SERVICE LINE
- W EXIST. WATER MAIN
- W WATER MAIN TO BE ABANDONED
- W PROP. WATER MAIN
- W PROP. WATER MAIN BORED
- TRENCH BACKFILL, WATERMAIN \*
- EX-ST. STORM SEWER/CULVERT
- SS PROP. STORM SEWER
- SS EXIST. SANITARY SEWER
- SS PROP. SANITARY SEWER
- GAS UNDERGROUND GAS LINE

\*SEE SCHEDULE SHEET 23

NOTE: ABANDONED WATERMANS TO REMAIN IN PLACE UNLESS THEY INTERFERE WITH OTHER CONSTRUCTION.  
 AREAS OF WATERMAIN INSTALLATION DESIGNATED WITH AN ASTERISK (\*) SHALL BE INSTALLED AT 42" BELOW GRADE.



STATE OF ILLINOIS PROFESSIONAL DESIGN FIRM LICENSE NO. 184-004515

© 2013 ALL RIGHTS RESERVED

**CLARIDA & ZIEGLER ENGINEERING CO.**  
 308 South Court St, P.O. Box 937  
 Marion, Illinois 62859  
 Phone - (618)993-6411, Fax - (618)993-6750

**WATER AND SEWER PLAN**  
 MORGAN AVE.  
 MARION, ILLINOIS

REVISIONS	DATE	NO.

Date: 2/27/13 DR. By: TW CK'D By: HGC  
 Scale: 1"=20' Job No.: 08153 Sheet No.: 25 of 45