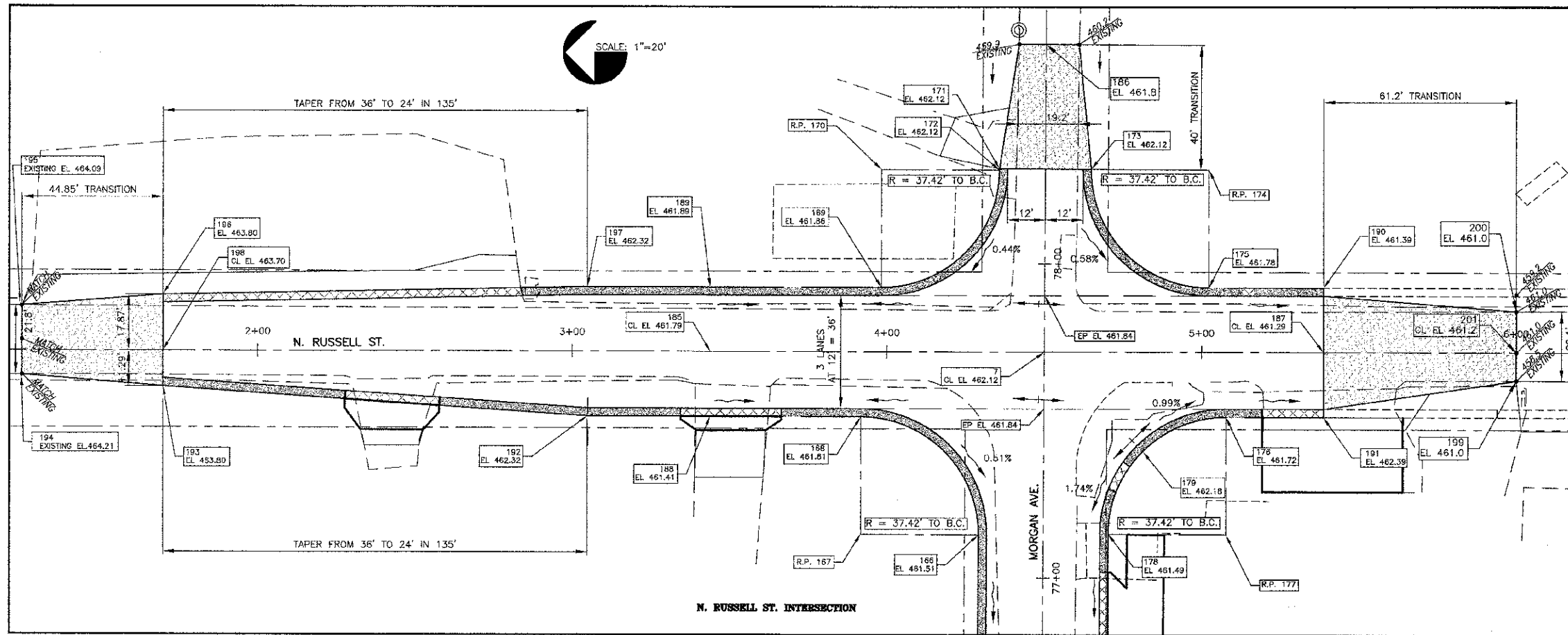


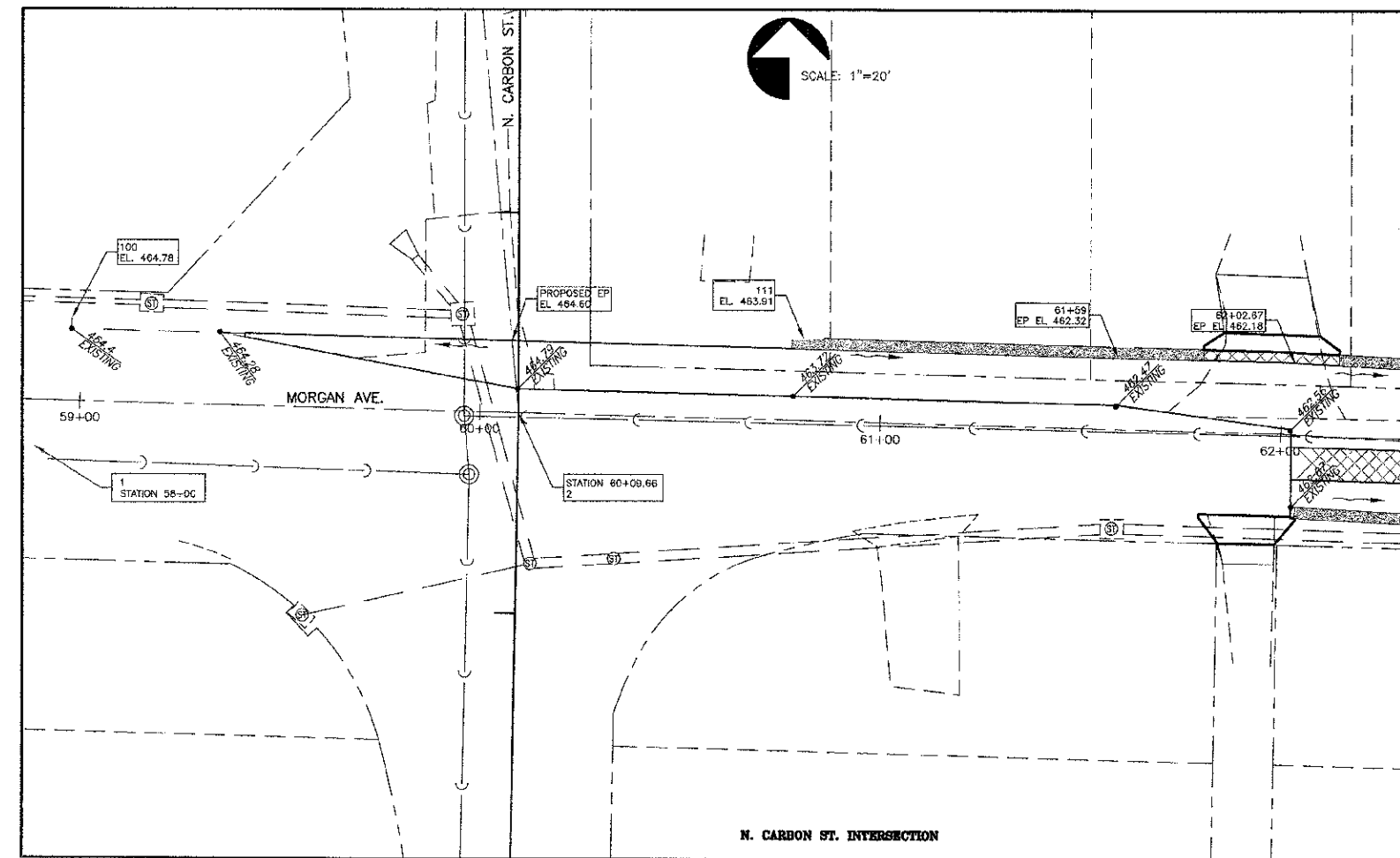
CONTRACT NO. 99394



MORGAN AVE. STATIONING

STAKEOUT POINTS

NO.	STATION	OFFSET	NORTHING	EASTING
1	58+00.00	0.00	393042.62	806307.35
2	60+09.66	0.00	393037.35	806516.95
3	61+97.77	0.00	393032.63	806705.00
4	64+49.65	0.00	393018.80	806956.50
5	67+01.54	0.00	393017.11	807208.38
6	69+20.50	0.00	393015.64	807427.34
7	71+71.83	0.00	393011.37	808278.65
8	74+86.88	0.00	393010.72	808406.82
9	77+86.88	450.00 L	393461.37	808278.97
10	77+75.41	830.00 R	392181.35	808278.07
11	77+77.06	1149.99 R	391861.37	808278.11
110	80+80.33	68.00 L	393103.56	806589.30
112	82+47.44	20.58 L	393050.51	806755.73
113	82+47.44	58.00 L	393087.87	806757.80
114	83+13.93	59.97 L	393087.77	806795.22
115	83+13.93	61.50 L	393087.70	806824.38
116	83+14.22	56.03 L	393082.22	806824.36
117	83+51.59	58.00 L	393082.12	806861.78
118	83+51.59	20.58 L	393050.51	806755.73
119	83+02.57	0.00 R	393087.74	806809.80
120	82+99.37	80.74 L	393076.45	807008.44
121	83+01.46	58.10 R	393076.45	807008.44
122	83+01.46	58.10 R	393076.45	807008.44
123	83+01.46	58.10 R	393076.45	807008.44
124	83+01.46	58.10 R	393076.45	807008.44
125	83+01.46	58.10 R	393076.45	807008.44
126	83+01.46	58.10 R	393076.45	807008.44
127	83+01.46	58.10 R	393076.45	807008.44
128	83+01.46	58.10 R	393076.45	807008.44
129	83+01.46	58.10 R	393076.45	807008.44
130	83+01.46	58.10 R	393076.45	807008.44
131	83+01.46	58.10 R	393076.45	807008.44
132	83+01.46	58.10 R	393076.45	807008.44
133	83+01.46	58.10 R	393076.45	807008.44
134	83+01.46	58.10 R	393076.45	807008.44
135	83+01.46	58.10 R	393076.45	807008.44
136	83+01.46	58.10 R	393076.45	807008.44
137	83+01.46	58.10 R	393076.45	807008.44
138	83+01.46	58.10 R	393076.45	807008.44
139	83+01.46	58.10 R	393076.45	807008.44
140	83+01.46	58.10 R	393076.45	807008.44
141	83+01.46	58.10 R	393076.45	807008.44
142	83+01.46	58.10 R	393076.45	807008.44
143	83+01.46	58.10 R	393076.45	807008.44
144	83+01.46	58.10 R	393076.45	807008.44
145	83+01.46	58.10 R	393076.45	807008.44
146	83+01.46	58.10 R	393076.45	807008.44
147	83+01.46	58.10 R	393076.45	807008.44
148	83+01.46	58.10 R	393076.45	807008.44
149	83+01.46	58.10 R	393076.45	807008.44
150	83+01.46	58.10 R	393076.45	807008.44
151	83+01.46	58.10 R	393076.45	807008.44
152	83+01.46	58.10 R	393076.45	807008.44
153	83+01.46	58.10 R	393076.45	807008.44
154	83+01.46	58.10 R	393076.45	807008.44
155	83+01.46	58.10 R	393076.45	807008.44
156	83+01.46	58.10 R	393076.45	807008.44
157	83+01.46	58.10 R	393076.45	807008.44
158	83+01.46	58.10 R	393076.45	807008.44
159	83+01.46	58.10 R	393076.45	807008.44
160	83+01.46	58.10 R	393076.45	807008.44
161	83+01.46	58.10 R	393076.45	807008.44
162	83+01.46	58.10 R	393076.45	807008.44
163	83+01.46	58.10 R	393076.45	807008.44
164	83+01.46	58.10 R	393076.45	807008.44
165	83+01.46	58.10 R	393076.45	807008.44
166	83+01.46	58.10 R	393076.45	807008.44
167	83+01.46	58.10 R	393076.45	807008.44
168	83+01.46	58.10 R	393076.45	807008.44
169	83+01.46	58.10 R	393076.45	807008.44
170	83+01.46	58.10 R	393076.45	807008.44
171	83+01.46	58.10 R	393076.45	807008.44
172	83+01.46	58.10 R	393076.45	807008.44
173	83+01.46	58.10 R	393076.45	807008.44
174	83+01.46	58.10 R	393076.45	807008.44
175	83+01.46	58.10 R	393076.45	807008.44
176	83+01.46	58.10 R	393076.45	807008.44
177	83+01.46	58.10 R	393076.45	807008.44
178	83+01.46	58.10 R	393076.45	807008.44
179	83+01.46	58.10 R	393076.45	807008.44
180	83+01.46	58.10 R	393076.45	807008.44
181	83+01.46	58.10 R	393076.45	807008.44
182	83+01.46	58.10 R	393076.45	807008.44
183	83+01.46	58.10 R	393076.45	807008.44
184	83+01.46	58.10 R	393076.45	807008.44
185	83+01.46	58.10 R	393076.45	807008.44
186	83+01.46	58.10 R	393076.45	807008.44
187	83+01.46	58.10 R	393076.45	807008.44



N. RUSSELL ST. STATIONING

STAKEOUT POINTS

NO.	STATION	OFFSET	NORTHING	EASTING
185	3+43.85	0.00 L	393117.51	808278.73
187	5+38.73	0.00 L	392922.64	808278.99
186	3+43.85	0.00 R	393117.51	808278.73
188	3+43.85	20.58 L	393117.53	808258.15
189	3+43.85	20.58 L	393117.50	808299.31
190	5+38.73	20.58 R	392922.62	808299.17
191	5+38.73	20.58 R	392922.65	808258.01
192	3+04.79	20.58 R	393156.59	808258.17
193	1+69.85	11.29 R	393291.53	808267.56
194	1+25.00	7.65 R	393336.37	808271.23
195	1+25.00	14.32 L	393336.36	808293.20
196	1+69.85	17.87 L	393291.51	808296.72
197	3+04.79	20.58 L	393156.56	808299.33
198	1+69.85	0.00 R	393291.52	808278.85
199	6+00.00	8.91 L	392861.37	808268.63
200	6+00.00	13.15 L	392861.38	808291.69
201	6+00.00	0.00 L	392861.37	808278.55

NOTE: UNLESS OTHERWISE NOTED, COORDINATE POINTS AND ELEVATIONS ARE TO BACK OF CURB.

STATE OF ILLINOIS PROFESSIONAL DESIGN FIRM LICENSE NO. 184-004515

REVISIONS

DATE	NO.

© 2013 ALL RIGHTS RESERVED

CLARIDA & ZIEGLER ENGINEERING CO.

308 South Court St, P.O. Box 937
Marion, Illinois 62959
Phone - (618)993-6411, Fax - (618)993-6750

INTERSECTION DETAILS
MORGAN AVE IMPROVEMENTS
MARION, ILLINOIS

Date 2/27/13 DR. By JW CK'D By SDD
Scale 1"=20' Job No. 08155 Sheet No. 32 of 45