

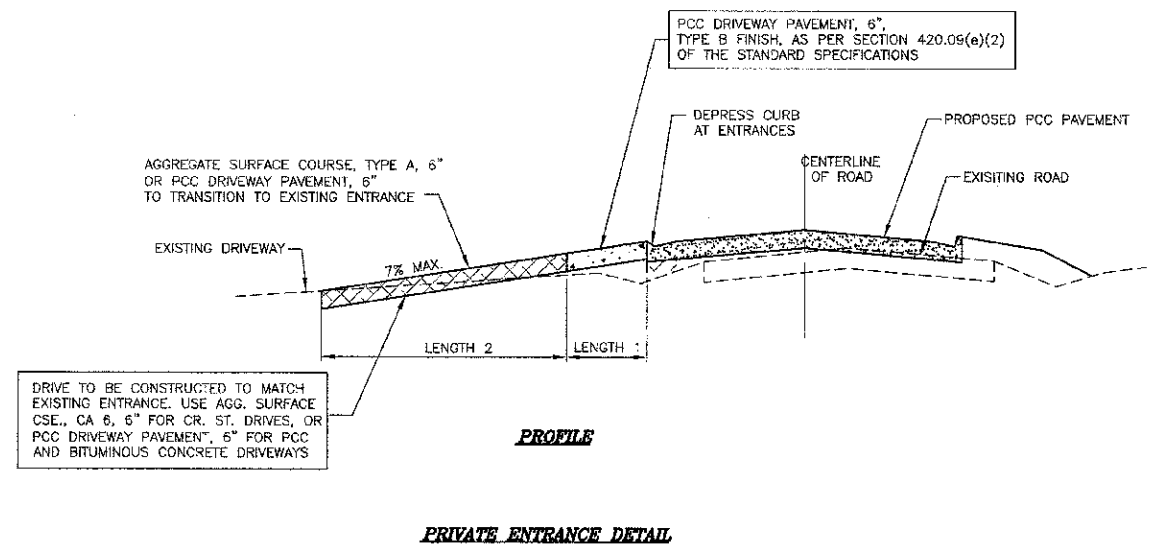
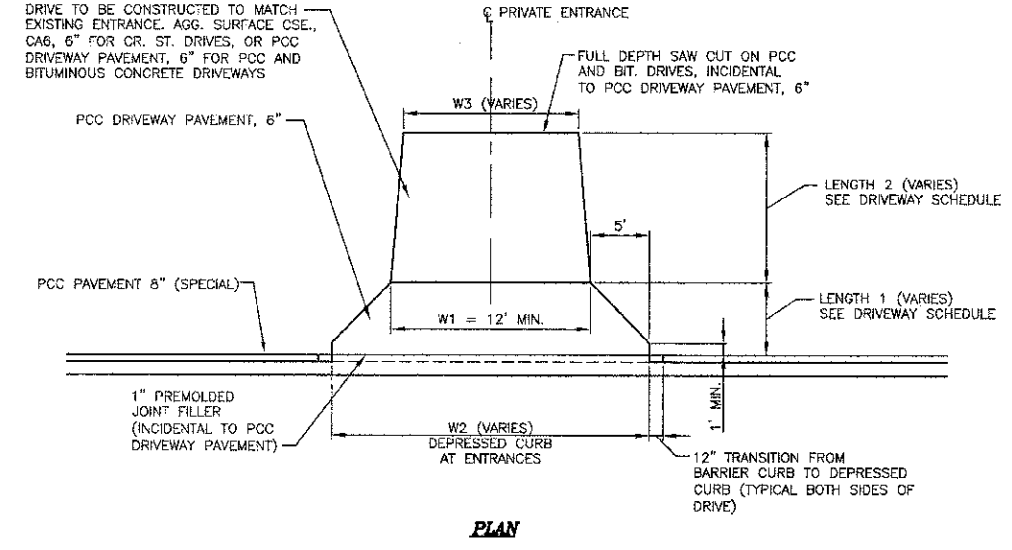
ENTRANCE QUANTITIES

STATION	TYPE	EXISTING SURFACE	WIDTH 1 (FOOT)	WIDTH 2 (FOOT)	WIDTH 3 (FOOT)	LENGTH 1 (FOOT)	LENGTH 2 (FOOT)	DRIVEWAY PAVEMENT REMOVAL (SQ YD)	AGG. SURFACE COURSE CA-6 6" (TON)	PCC DRIVEWAY PAVEMENT 6" (SQ YD)
PLAN SHEET 9										
61+92 RT	PE	CR STONE	24.0	14.0	12.7	7.1	5.0		3	16
61+98 LT	PE	CR STONE	34.0	24.0	22.9	4.3	14.4		12	15
62+90 RT	PE	CR STONE	28.0	18.0	14.8	6.9	5.0		3	18
63+15 LT	PE	CR STONE		13.0	13.0		25.0		13	
63+77 LT	PE	CR STONE	24.0	13.4	10.8	4.4	15.0		7	10
SUBTOTAL								0	34	59
PLAN SHEET 10										
64+50 LT	PE	ASPHALT	24.0	14.0	16.7	4.6	10.0	19	6	10
64+50 RT	PRIVATE RD	PCC	37.8	24.4	NA	16.6	NA	95		55
67+02 LT	BRUCE ALLEY	CR STONE	28.0	18.0	25.0	4.4	25.0		38	12
67+53 LT	PE	CR STONE	NA	12.0	12.0	NA	25	19	15	
68+88 LT	PE	CR STONE	25.4	16.0	22.2	4.4	10.0		7	11
69+39 LT	PE	CR STONE	30.0	20.0	30.9	4.4	10.0		9	13
SUBTOTAL								133	75	101
PLAN SHEET 11										
72+02 RT	PE	CR STONE	30.0	20.0	20.0	6.9	11.7		9	20
72+84 RT	PE	CR STONE	22.0	12.0	12.0	6.9	10.5		5	14
74+30 LT	CE	CR STONE	54.0	44.0	59.4	4.4	14.9		36	25
74+61 RT	PE	CR STONE	34.0	24.0	24.0	6.9	5.0		5	23
75+50 RT	PE	ASPHALT	30.0	20.0	21.9	14.4	NA	52		37
SUBTOTAL								52	55	119
PLAN SHEET 12										
76+11 RT	PE	CR STONE	25.0	15.0	20.1	6.9	10.5		7	16
* 76+50 RT	PE	PCC	NA	NA	NA	NA	NA	14		
76+59 LT	PE	ASPHALT	22.0	12.0	10.9	4.4	10.0	35		22
76+88 RT	PE	CR STONE	28.5	20.0	52.9	6.0	11.8			86
* 77+09 RT	PE	PCC	NA	NA	NA	NA	NA	44		
78+40 LT	PE	CR STONE	NA	19.6	13.1	NA	18.1		11	
SUBTOTAL								93	18	124
PLAN SHEET 13										
2+43 RT	PE	CR STONE	30.0	20.0	17.4	7.2	5.0		4	21
1+25 TO 2+85 LT	REPLACE P.I.	CR STONE	180	152	NA	VARIES	NA		55	NA
3+50 RT	PE	ASPHALT	32.0	22.0	21.9	4.4	15.0	84	12	14
SUBTOTAL								84	71	35
PLAN SHEET 14										
5+50 RT	PE	ASPHALT	NA	34.1	45.0	NA	6.2	76	11	
6+23 RT	PE	CR STONE	NA	46.3	43.4	NA	15.8		24	
6+73 RT	PE	CR STONE	NA	15.4	10.2	NA	13.1		6	
7+93 LT	PE	CR STONE	NA	30.2	23.0	NA	6.3		6	
9+83 RT	PE	CR STONE	NA	14.8	11.9	NA	9.5		6	
10+82 RT	PE	DIRT	NA	22.0	12.0	NA	13.4		9	
SUBTOTAL								76	62	
PLAN SHEET 15										
11+27 & 11+48 RT	PE (DOUBLE)	CR STONE	NA	36.6	31.9	NA	9.4		12	
13+89 RT	CE	PCC	24.1	31.7	24.6	4.4	5.3	28		28
SUBTOTAL								28	12	28

* DRIVEWAY PAVEMENT REMOVAL ONLY

ROUTE NO.	SECTION	COUNTY	TOTAL SHEETS	SHEET NO.
F.A.U. 9718	08-00105-00-PP	WILLIAMSON	45	34
ILLINOIS		MORGAN ST.		

CONTRACT NO. 99394



STATE OF ILLINOIS PROFESSIONAL DESIGN FIRM LICENSE NO. 184-000872

© 2013 ALL RIGHTS RESERVED

CLARIDA & ZIEGLER ENGINEERING CO.
 308 South Court St, P.O. Box 937
 Marion, Illinois 62959
 Phone - (618)993-6411, Fax - (618)993-6750

ENTRANCE DETAILS
MORGAN AVENUE IMPROVEMENTS
MARION, ILLINOIS

Date: 2/27/13 DR. By: TDE CK'D By: WBZ
 Scale: NONE Job No. 08155 Sheet No. 34 of 45