

ROUTE NO.	SECTION	COUNTY	TOTAL SHEETS	SHEET NO.
F.A.U. 9718	08-00105-00-PP	WILLIAMSON	45	36
ILLINOIS		MORGAN ST.		

# DETAILS OF INLET SPECIAL NO. 1

N.T.S.

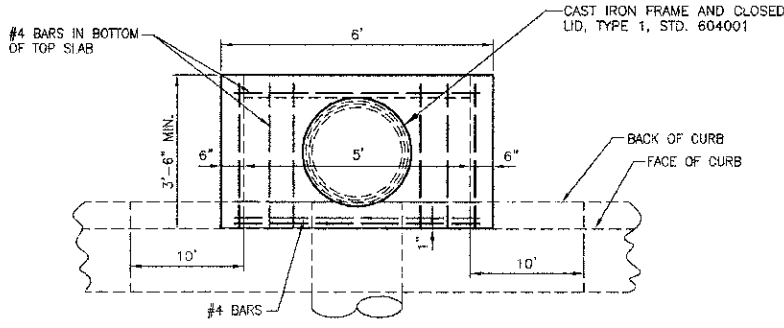
PIPE DIAM.	"D"
18" OR LESS	2'-6"
21" & 24"	3'-0"
27" & 30"	3'-6"
33" & 36"	4'-0"
42"	4'-6"
48"	5'-0"
54"	6'-0"

**NOTES:**  
 CLASS SI CONCRETE SHALL BE USED THROUGHOUT. SET FACE OF INLET 1" BEHIND FACE OF CURB. DEPRESS GUTTER FLOWLINE AT INLET 2 1/2" BELOW NORMAL GUTTER FLOWLINE. CONSTRUCT TRANSITION IN FLOWLINE IN 10 FEET EACH SIDE OF INLET. PIPES SHALL BE CONNECTED TO INLET AS SHOWN ON STORM SEWER LAYOUT.

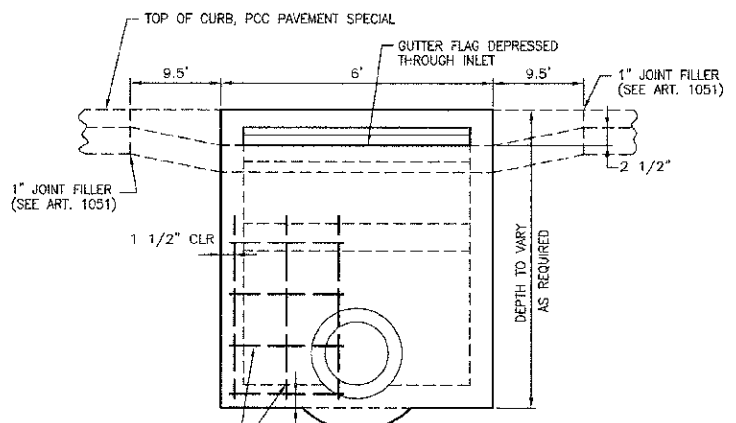
INLETS WILL BE PAID FOR AT THE CONTRACT UNIT PRICE EACH FOR INLET SPECIAL NO. 1, WHICH PRICE SHALL INCLUDE THE CAST IRON FRAME AND CLOSED LID, THE REINFORCEMENT BARS, METAL STEPS, AND JOINT FILLER.

\*\*THE GALV. IRON STEPS AS DETAILED HEREON ARE TYPICAL. STEPS OF OTHER DESIGN AND MATERIAL THAT WILL CONFORM TO THE MINIMUM REQUIREMENTS OF THE STEPS SHOWN MAY BE USED WHEN APPROVED BY THE ENGINEER.

PRECAST INLETS WILL NOT BE ALLOWED. PRECAST BOTTOMS FOR INLET SPECIAL NO. 1, SIMILAR TO INLET SPECIAL NO. 2, DETAILED IN THESE PLANS, WILL BE ALLOWED. HOWEVER, THE TOP OF INLET SPECIAL NO. 1 FROM BELOW THE THROAT OF THE INLET WILL BE CAST-IN-PLACE IF PRECAST BOTTOMS ARE UTILIZED BY THE CONTRACTOR.

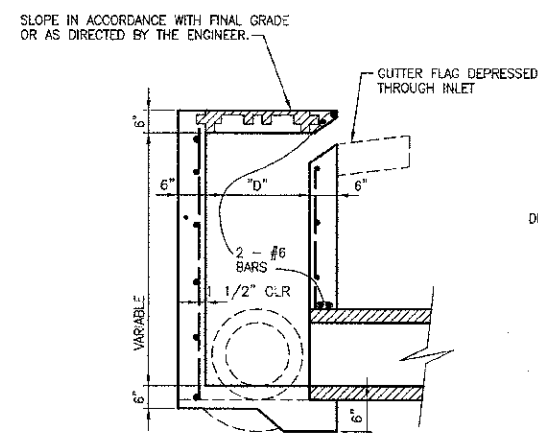


**PLAN**

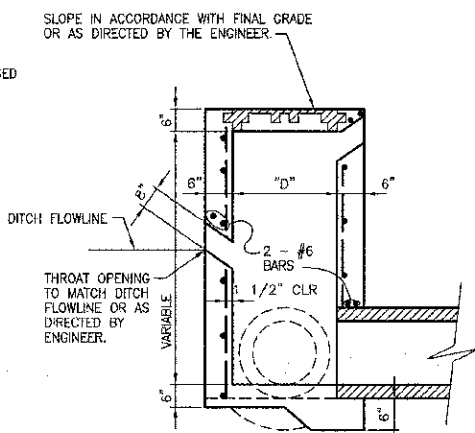


**ELEVATION**

PLACE #4 BARS 12" ON CTRS. IN BOTH DIRECTIONS IN WALLS AND IN TOP OF BOTTOM SLAB

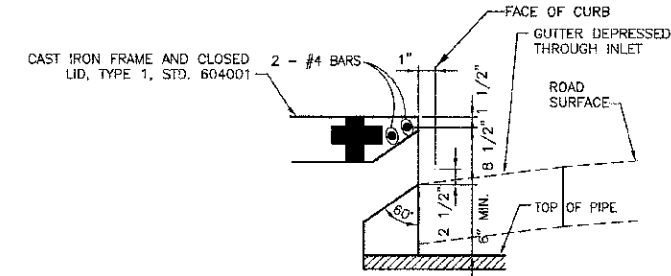


**SECTION**

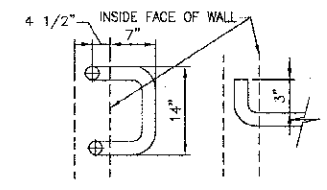


**SECTION WITH REAR OPENING**

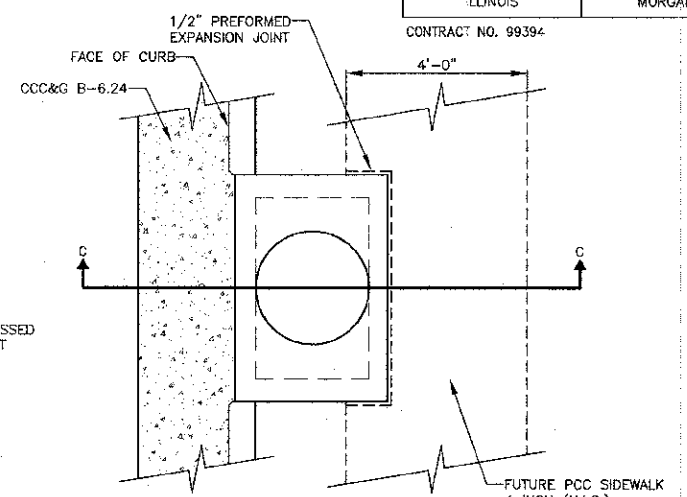
INLET 28D



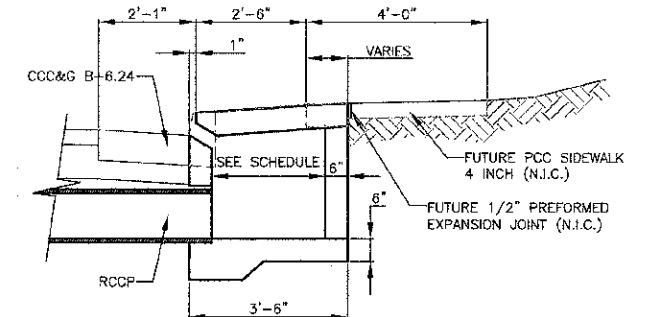
**DETAIL AT WEIR**



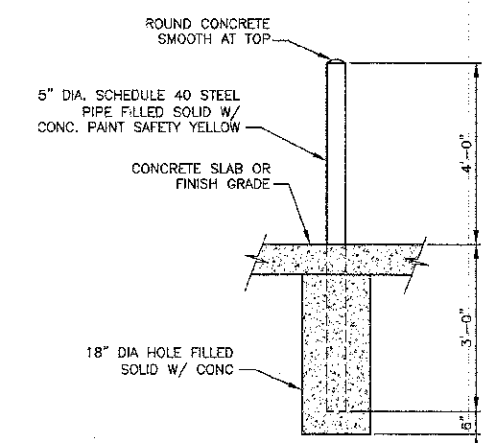
**DETAIL OF MANHOLE STEPS**



**DETAIL OF INLET SPECIAL NO. 1 AT SIDEWALK**



**SECTION C-C**



**STEEL BOLLARD DETAIL**

NOT TO SCALE

STATE OF ILLINOIS PROFESSIONAL DESIGN FIRM LICENSE NO. 184-000872

© 2013 ALL RIGHTS RESERVED

**CLARIDA & ZIEGLER ENGINEERING CO.**  
 308 South Court St, P.O. Box 937  
 Marion, Illinois 62959  
 Phone - (618)993-6411, Fax - (618)993-6750

MISCELLANEOUS DETAILS  
 MORGAN AVE. IMPROVEMENTS  
 MARION, ILLINOIS

Date: 2/27/13 DR. By: TW CKD By: HGC  
 Scale: NONE Job No: 08155 Sheet No: 36 of 45