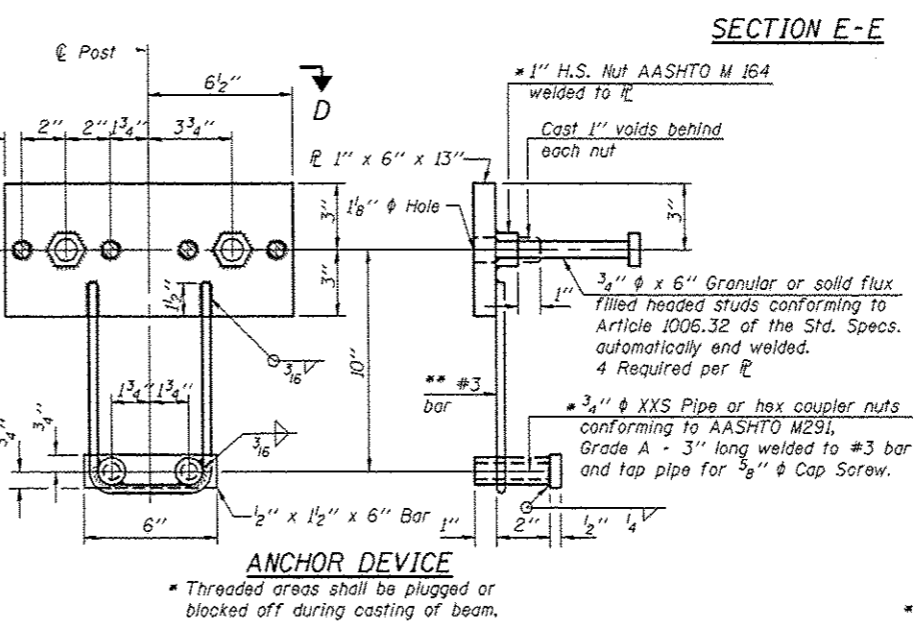
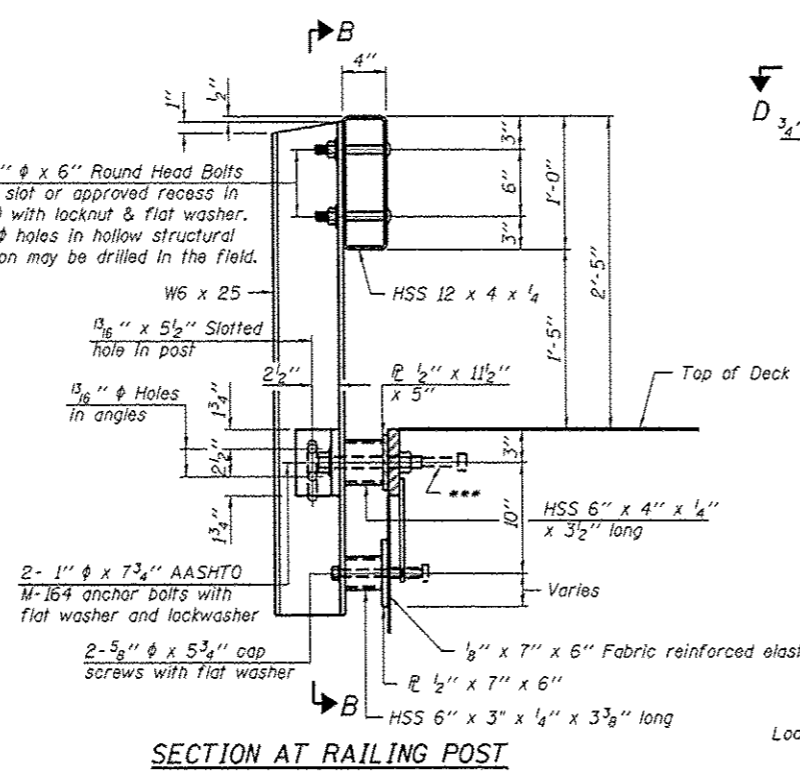
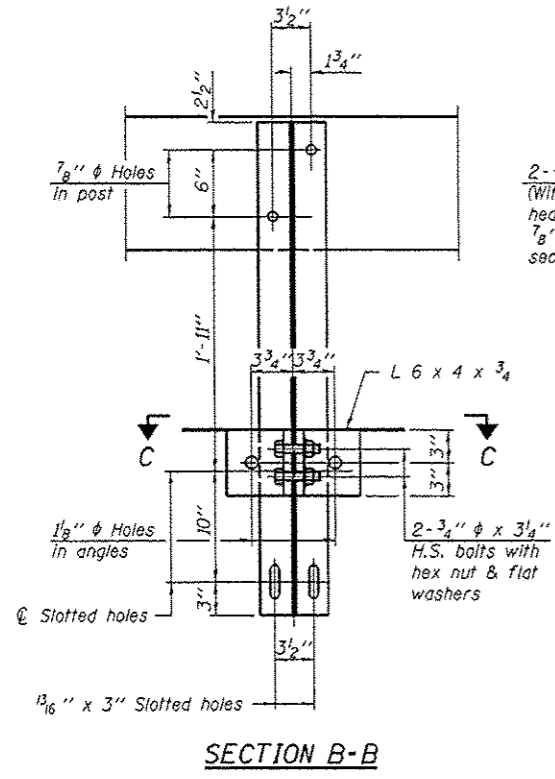
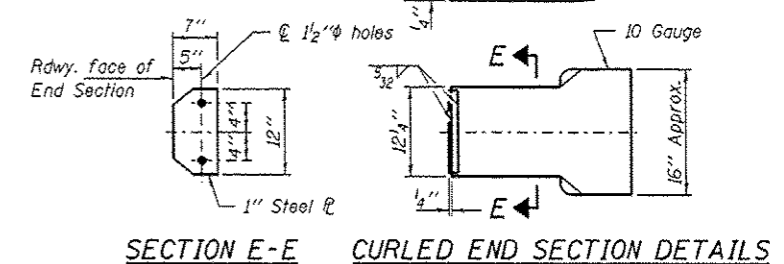
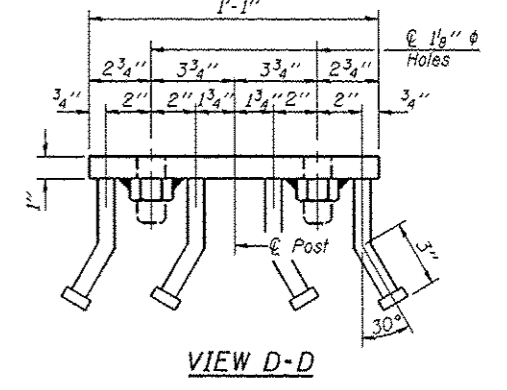
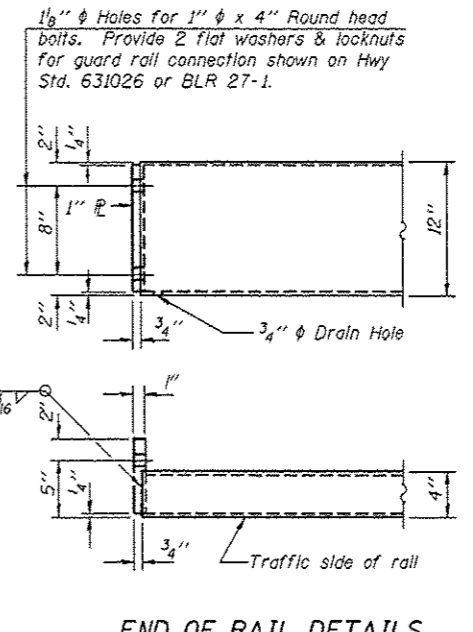
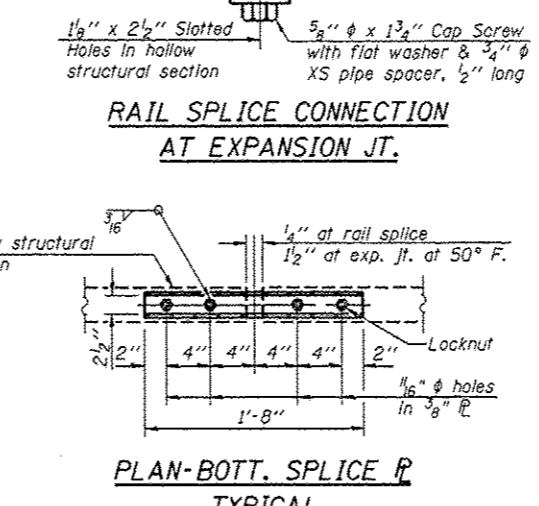
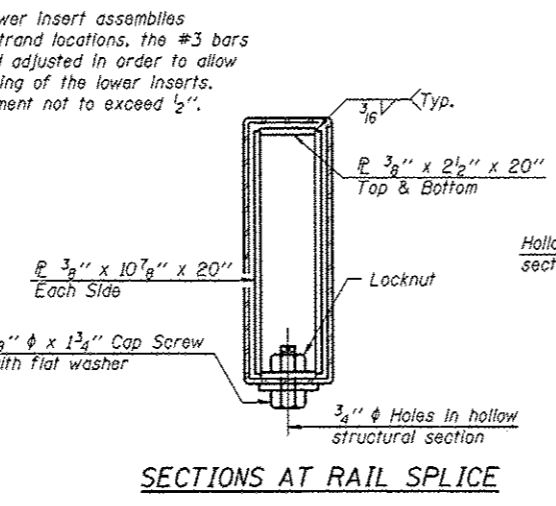
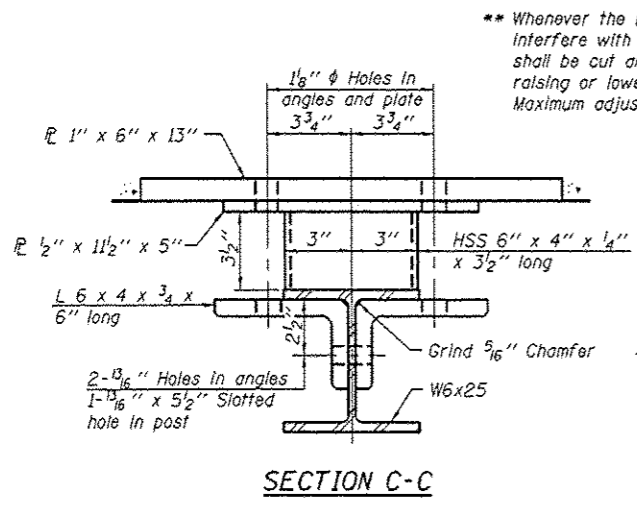


Note: Cost of curled end sections shall be included with the Steel Railing. (2 Required)



Notes:  
 All field drilled holes shall be coated with an approved zinc rich paint before erection.  
 For multi-span bridges, sufficient 1/4 inch x 6 inch x 1-2 inch galvanized steel shims shall be provided to align rail between adjacent spans. Cost Included with Steel Railing, Type S-1.  
 All steel rail elements shall be galvanized according to Article 509.05 of the Standard Specifications.  
 \*\*\* The studs of the anchor devices shall be placed below the top reinforcement bars and the outermost longitudinal reinforcement bar shall be placed directly above the studs of the rail post anchor device.



**BILL OF MATERIAL**

Item	Unit	Quantity
Steel Railing, Type S-1	Foot	101

R-23A 7-1-10 (10'-9" Maximum Post Spacing)

FILE NAME: 120857-shr-bridge.dgn	USER NAME:	DESIGNED - D.W.T.	REVISIONS -	STATE OF ILLINOIS HARDIN COUNTY HIGHWAY DEPARTMENT	STEEL RAILING, TYPE S-1 STRUCTURE NO. 035-3052 SHEET NO. 5 OF 11 SHEETS	T.R.	SECTION	COUNTY	TOTAL SHEETS	SHEET NO.	
HAMPTON, LENZINI AND REINICK, INC.	PLOT SCALE:	CHECKED - S.W.M.	REVISIONS -			97	07-01161-00-BR	HARDIN	15	9	
1471000000	PLOT DATE:	DRAWN - D.A.B.	REVISIONS -			COUNTY UNIT ROAD DISTRICT CONTRACT NO. 99491					
ILLINOIS PROFESSIONAL DESIGN FIRM		CHECKED - S.W.M.	REVISIONS -			ILLINOIS FED. AID PROJECT					
1471000000											