

RTE.	SECTION	COUNTY	TOTAL SHEETS	SHEET NO.
FAS 1872	11-00182-00-RS	FRANKLIN	6	1

ROAD CLASSIFICATION: MAJOR COLLECTOR
DESIGN SPEED: 50 M.P.H.

STATE OF ILLINOIS
DEPARTMENT OF TRANSPORTATION
DIVISION OF HIGHWAYS

PLANS FOR PROPOSED ROADWAY IMPROVEMENTS

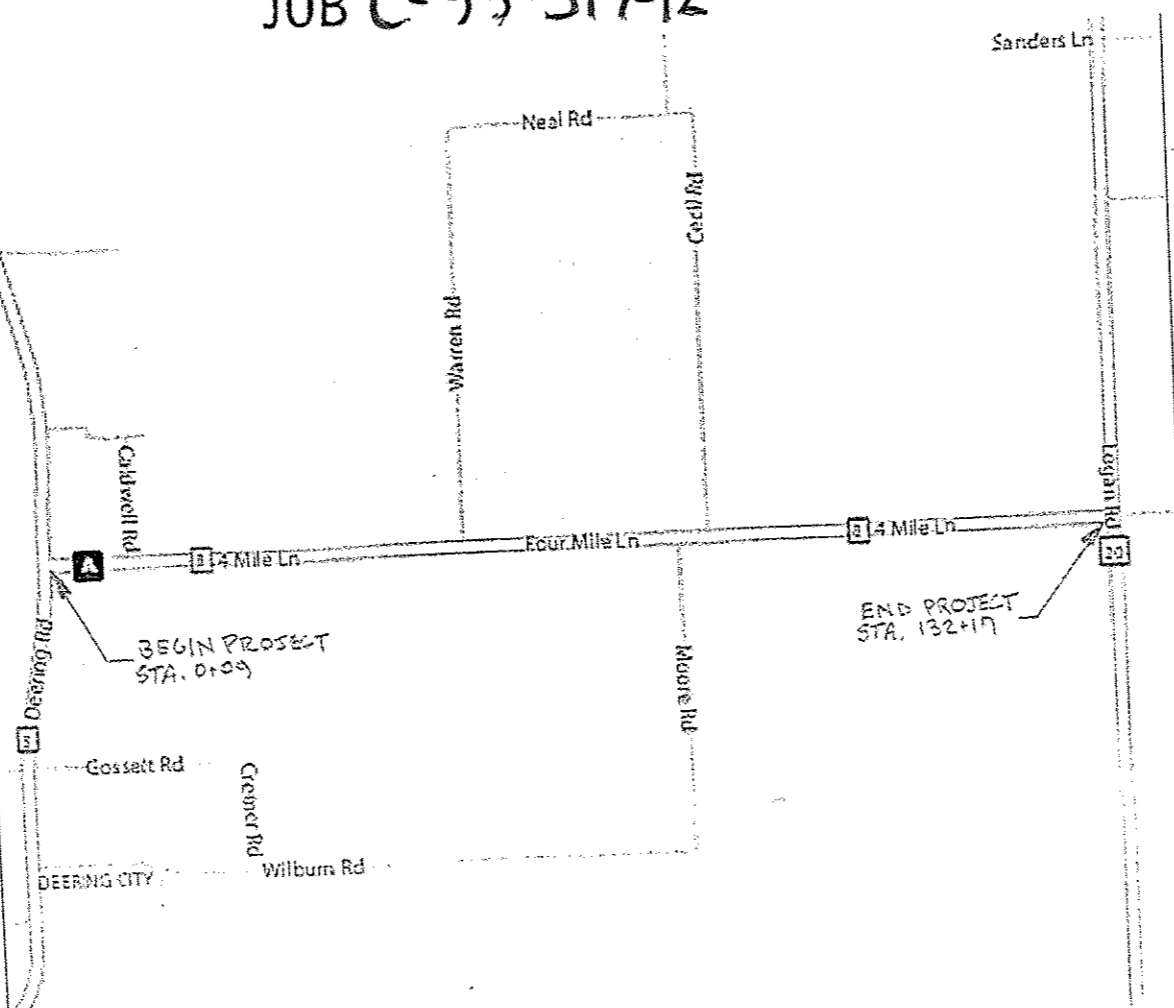
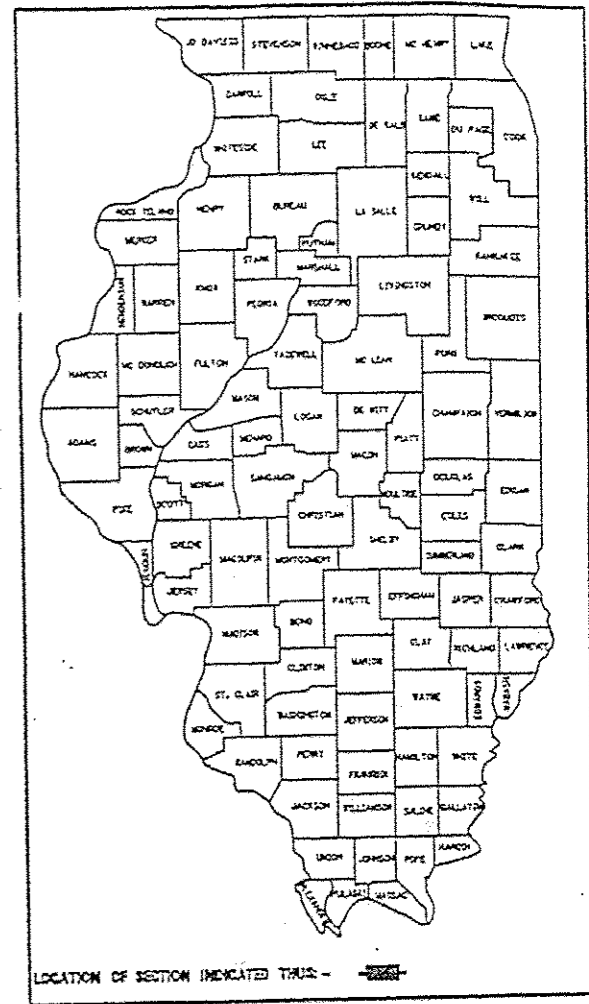
ADT:
(2012) = 375
(2027) = 435
PC = 383
SU = 30
MU = 22
DHV₁₅ = 44

JOINT UTILITY LOCATING INFORMATION
FOR EXCAVATIONS (J.U.L.I.E.)
PHONE 1-800-892-0123

FAS 1872
Franklin County, Illinois
Section 11-00182-00-RS
Project RS-1872(105)
JOB C-99-517-12

SHEET NO.	TITLE
1	COVER SHEET AND SUMMARY OF QUANTITIES
2	MISCELLANEOUS DETAILS
3	TYPICAL SECTIONS AND MISCELLANEOUS DETAILS
4-6	PLAN

- STANDARDS
- 701006-04
 - 701201-04
 - 701301-04
 - 701306-03
 - 701311-03
 - 701901-02
 - 780001-03
 - BLR 24-2

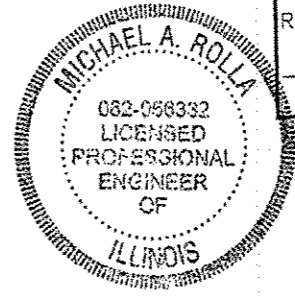


SUMMARY OF QUANTITIES			
CODE NO.	PAY ITEM	UNIT	TOTAL
40200800	AGGREGATE SURFACE COURSE, TYPE B	TON	116
40600100	BITUMINOUS MATERIALS (PRIME COAT)	GALLON	142
40600982	HOT-MIX ASPHALT SURFACE REMOVAL	SQ YD	496
	-BUTT JOINT		
40603085	HOT-MIX ASPHALT BINDER COURSE,	TON	3,646
	IL 19.0, N70		
40603315	HOT-MIX ASPHALT SURFACE COURSE,	TON	2,827
	MIX "C", N70		
48100100	AGGREGATE SHOULDERS, TYPE A	TON	1,873
67100100	MOBILIZATION	L SUM	1
70300100	SHORT TERM PAVEMENT MARKING	FOOT	1,321
Δ78001110	PAINT PAVEMENT MARKING - LINE 4"	FOOT	30,123

Δ SPECIALTY ITEMS
* SEE SPECIAL PROVISIONS

LOCATION MAP
NET LENGTH: 13,208 FEET (2.50 MILES)

CONTRACT NO. 99498



STATE OF ILLINOIS
DEPARTMENT OF TRANSPORTATION

APPROVED 3/6/13
[Signature]
FRANKLIN COUNTY HIGHWAY ENGINEER

PASSED 3/25/2013
Dennis W. Hill
DISTRICT 9 ENGINEER OF LOCAL ROADS & STREETS

RELEASING FOR BID
BASED ON LIMITED
REVIEW 3/25/2013
Jeffrey L. Kevin
DEPUTY DIRECTOR OF HIGHWAYS, REGION 5 ENGINEER

[Signature]
MICHAEL A. ROLLA
ILLINOIS REGISTERED PROFESSIONAL ENGINEER
#062-056332
LIC. EXPIRES NOVEMBER 30,