

**INDEX OF SHEETS**

FOR INDEX OF SHEETS, SEE SHEET NO. 2

PROJECT LOCATED IN THE CITY OF CHICAGO

DAN RYAN EXPRESSWAY:	ADT (2010)	DESIGN SPEED	POSTED SPEED
NB I-94 (DAN RYAN)	151,800	60 MPH	55 MPH
NB 79TH STREET C-D ENTRANCE RAMP	9,200	45 MPH	40 MPH
NB 76TH STREET C-D EXIT RAMP	7,200	45 MPH	40 MPH
NB 75TH STREET C-D ENTRANCE RAMP	11,300	45 MPH	40 MPH
NB 71ST STREET C-D EXIT RAMP	6,600	45 MPH	40 MPH

**STATE OF ILLINOIS  
DEPARTMENT OF TRANSPORTATION  
DIVISION OF HIGHWAYS**

**PROPOSED HIGHWAY PLANS**

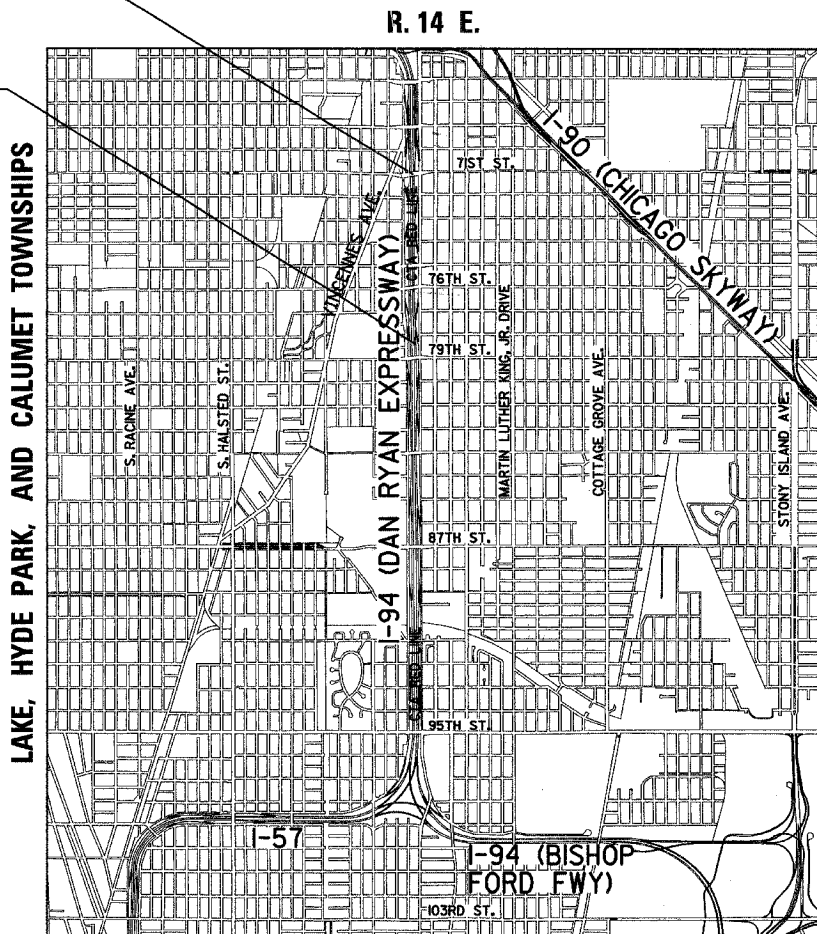
**F.A.I. ROUTE 94 (DAN RYAN EXPRESSWAY)  
SECTION 1818 R-3  
PROJECT NO.: IM-094-3(403)060  
79TH STREET TO 71ST STREET  
NB LANES 1 - 5, SHOULDERS & CTA BARRIER WALL  
COOK COUNTY  
C-91-292-06**

**PROJECT DESCRIPTION**

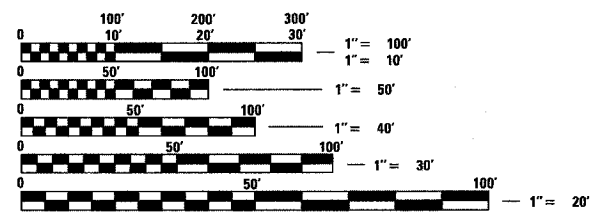
THE PROPOSED IMPROVEMENT CONSISTS OF PAVEMENT AND CTA BARRIER WALL RECONSTRUCTION, WIDENING, RAMP TERMINALS, SHOULDERS, AND DRAINAGE MODIFICATIONS ALONG NB I-94 (DAN RYAN EXPRESSWAY).

F.A.I. 94 PROJECT LIMIT  
STA. 2367+00.00 (NB I-94)

F.A.I. 94 PROJECT LIMIT  
STA. 2316+00.00 (NB I-94)



LAKE, HYDE PARK, AND CALUMET TOWNSHIPS



FULL SIZE PLANS HAVE BEEN PREPARED USING STANDARD ENGINEERING SCALES; REDUCED SIZED PLANS WILL NOT CONFORM TO STANDARD SCALES. IN MAKING MEASUREMENTS ON REDUCED PLANS, THE ABOVE SCALES MAY BE USED

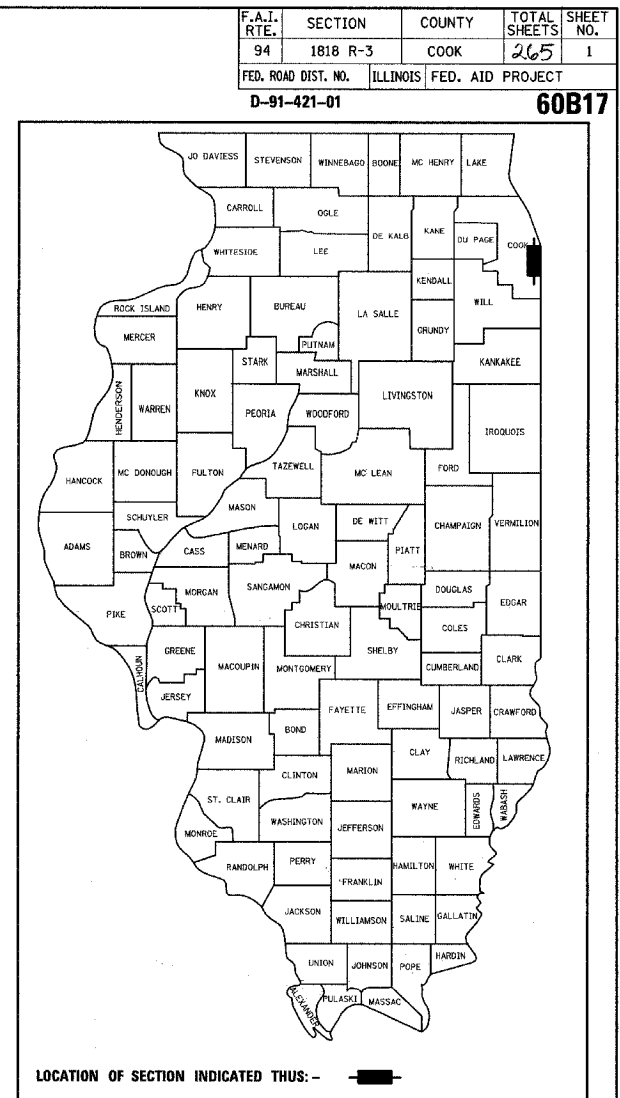
**DIGGER:**  
CHICAGO UTILITY ALERT NETWORK  
(312) 744-7000

**CTA CONTACT:**  
MARVIN A. WATSON,  
GENERAL MANAGER, CONSTRUCTION  
(312) 681-3860

**CONTRACT NO. 60B17**

**LOCATION MAP**

0 1/2 MILE 1 MILE  
GROSS LENGTH OF PROJECT = 5100.0 FT. = 0.966 MI.  
MAP SCALE: 1" = 1/2 MILE  
NET LENGTH OF PROJECT = 5100.0 FT. = 0.966 MI.



**STATE OF ILLINOIS  
DEPARTMENT OF TRANSPORTATION  
DIVISION OF HIGHWAYS**

SUBMITTED March 8, 2006

Diane M. O'Keefe/CAL  
DISTRICT ENGINEER

March 24, 2006  
Mike Stone/ED  
ENGINEER OF DESIGN AND ENVIRONMENT

March 24, 2006  
Milton R. Sees, P.E./ED  
DIRECTOR, DIVISION OF HIGHWAYS

**CONTRACT 20C**

**DEAN A. KIESLING**  
32957  
REGISTERED  
PROFESSIONAL  
ENGINEER  
OF  
ILLINOIS

Signed Dean A. Kiesling  
Dean A. Kiesling, P.E., II, Lic. No. 32957  
Expires 11-30-2007.  
Date March 7, 2006

**THOMAS MIKOLAJEWSKI**  
062-056151  
LICENSED  
PROFESSIONAL  
ENGINEER  
OF  
ILLINOIS

Signed Thomas Mikolajewski  
Thomas Mikolajewski, P.E., II, Lic. No. 062-056151  
Expires 11-30-2007.  
Date March 7, 2006  
For Electrical Drawings 162-180

**PHILLIP D. FREY**  
081-004826  
REGISTERED  
PROFESSIONAL  
ENGINEER  
OF  
ILLINOIS

Signed Phillip D. Frey  
Phillip D. Frey, S.E., II, Lic. No. 081-004826  
Expires 11-30-2006.  
Date 3/7/06  
For Structural Drawings 187-190

Rev. 5-10-06

**TYLIN INTERNATIONAL**  
PRINTED BY THE AUTHORITY OF THE STATE OF ILLINOIS

DISTRICT ONE DESIGN / PROJECT MANAGER:  
BRIAN KUTTAB (847) 705 - 4431