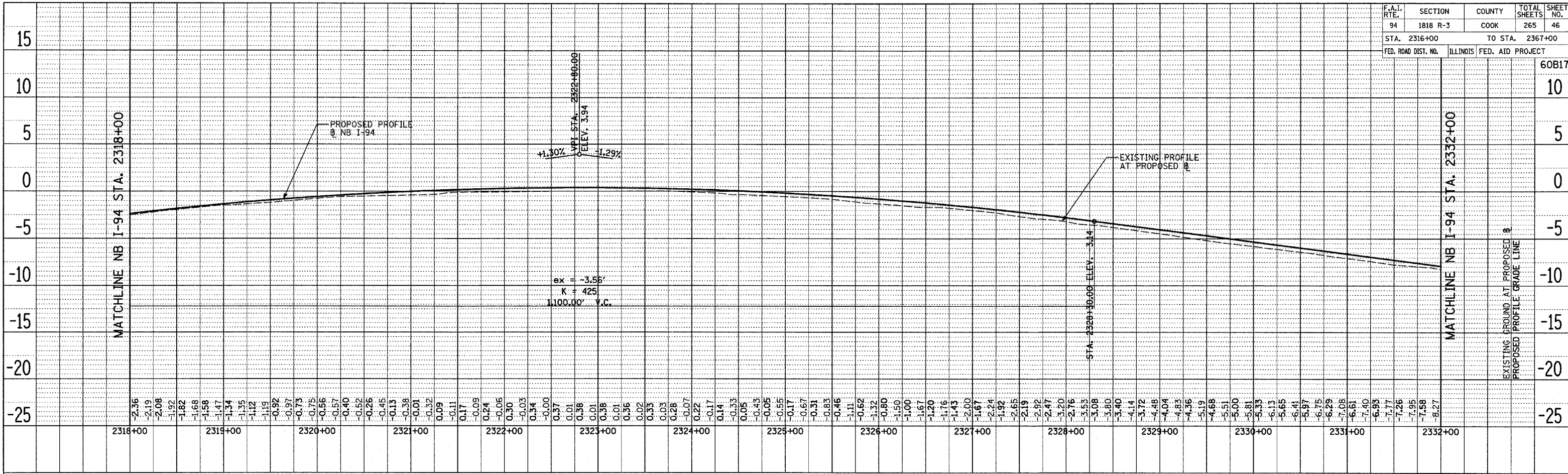
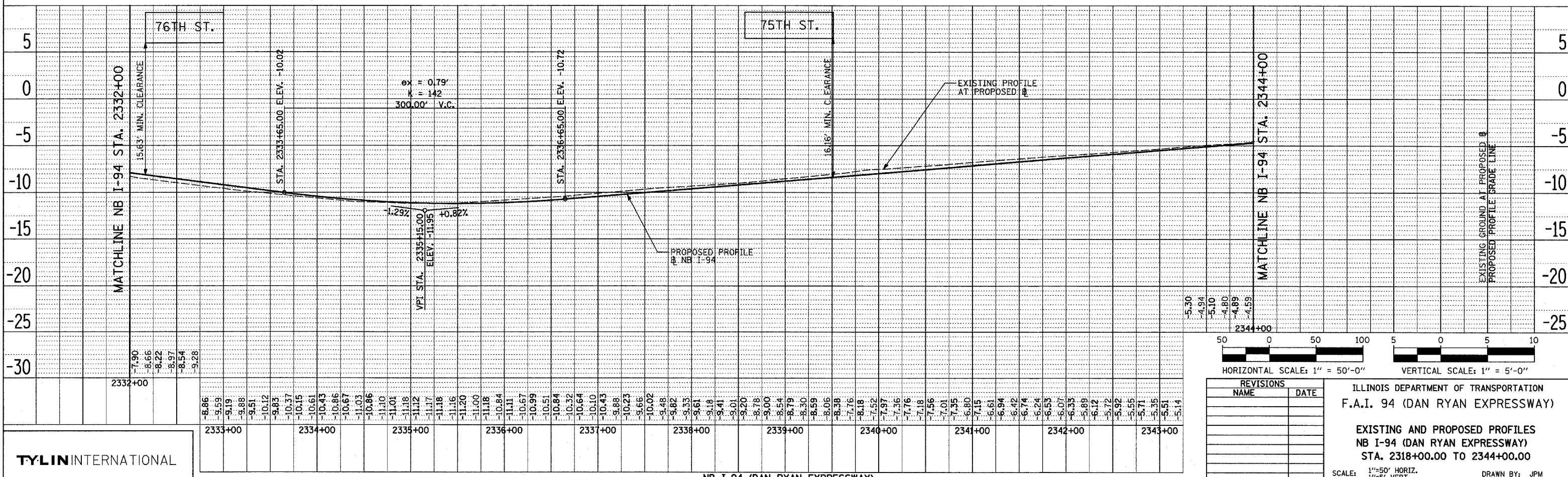


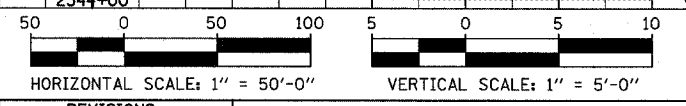
F.A.I. RTE.	SECTION	COUNTY	TOTAL SHEETS	SHEET NO.
94	1818 R-3	COOK	265	46
STA. 2316+00		TO STA. 2367+00		
FED. ROAD DIST. NO.	ILLINOIS	FED. AID PROJECT		



NB I-94 (DAN RYAN EXPRESSWAY)



NB I-94 (DAN RYAN EXPRESSWAY)



REVISIONS	
NAME	DATE

ILLINOIS DEPARTMENT OF TRANSPORTATION  
 F.A.I. 94 (DAN RYAN EXPRESSWAY)  
 EXISTING AND PROPOSED PROFILES  
 NB I-94 (DAN RYAN EXPRESSWAY)  
 STA. 2318+00.00 TO 2344+00.00  
 SCALE: 1"=50' HORIZ.  
 1"=5' VERT.  
 DATE: MARCH 7, 2006  
 DRAWN BY: JPM  
 CHECKED BY: MPG

DATE: \_\_\_\_\_ BY: \_\_\_\_\_  
 SURVEYED \_\_\_\_\_  
 PLAN \_\_\_\_\_  
 NOTE BOOK \_\_\_\_\_  
 NO. \_\_\_\_\_  
 CHECKED \_\_\_\_\_  
 NO. \_\_\_\_\_  
 FILE NAME \_\_\_\_\_

DATE: \_\_\_\_\_ BY: \_\_\_\_\_  
 SURVEYED \_\_\_\_\_  
 PLAN \_\_\_\_\_  
 NOTE BOOK \_\_\_\_\_  
 NO. \_\_\_\_\_  
 CHECKED \_\_\_\_\_  
 NO. \_\_\_\_\_  
 FILE NAME \_\_\_\_\_

TYLIN INTERNATIONAL