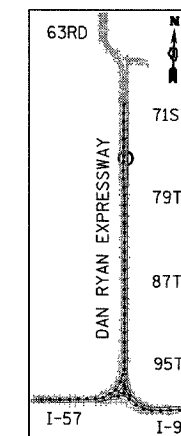
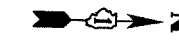
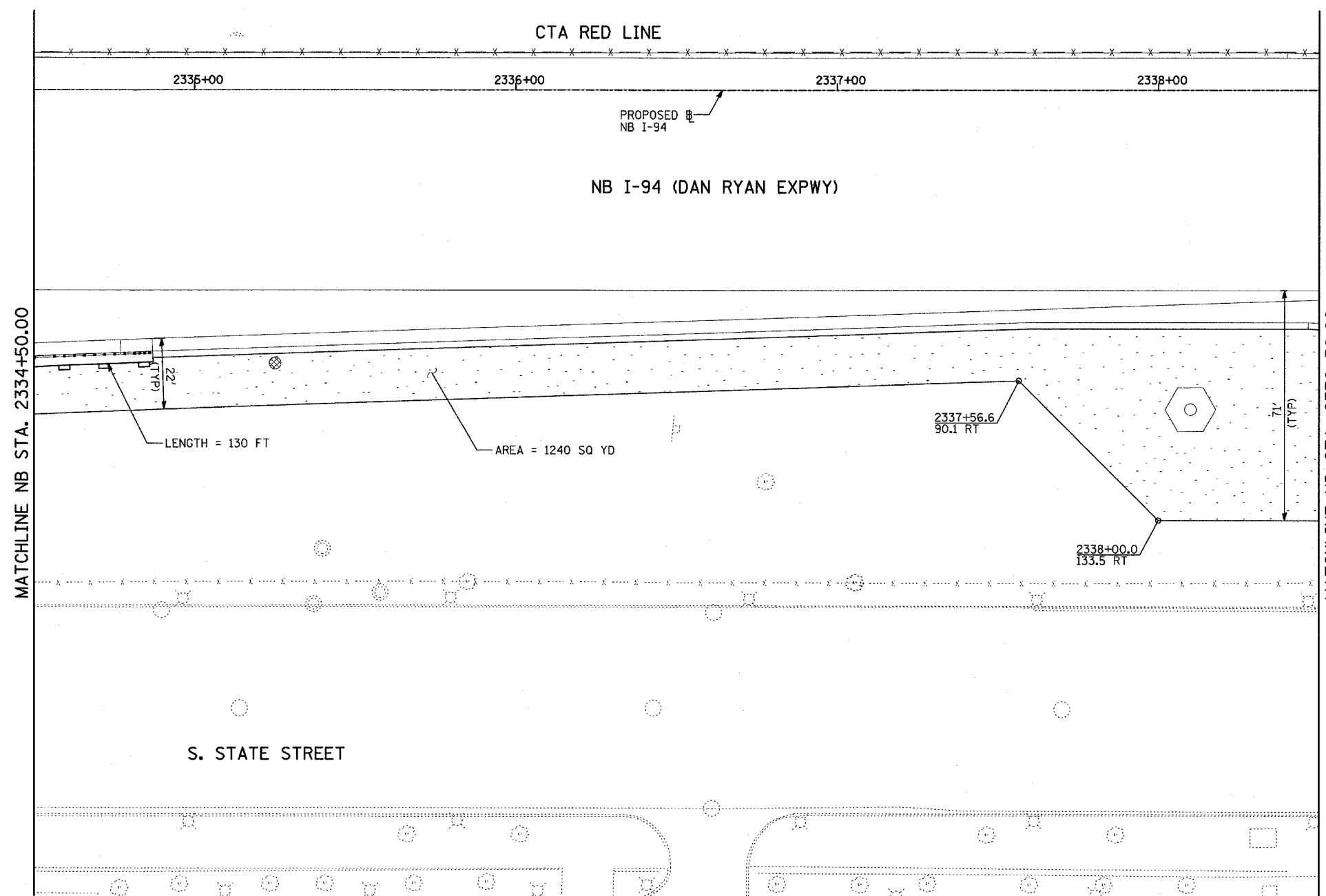
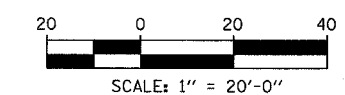


F.A.I. RTE.	SECTION	COUNTY	TOTAL SHEETS	SHEET NO.
94	1818 R-3	COOK	265	100
STA. 2316+00		TO STA. 2367+00		
FED. ROAD DIST. NO.	ILLINOIS	FED. AID PROJECT		

60B17



LOCATION MAP



TYLIN INTERNATIONAL

TOTAL NUMBER OF INLET FILTERS THIS SHEET: 1  
 TOTAL NUMBER OF TEMPORARY DITCH CHECKS THIS SHEET: 0  
 TOTAL NUMBER OF TREES TO BE PROTECTED THIS SHEET: 0

- LEGEND:**
- TEMPORARY EROSION CONTROL SEEDING
  - SEDIMENT CONTROL, SILT FENCE
  - INLET FILTER, TO BE INSTALLED IN OFF PROJECT DRAINAGE STRUCTURES ACCEPTING STORMWATER RUNOFF
  - TEMPORARY FENCE
  - TEMPORARY DITCH CHECK
  - PROPOSED DRAINAGE SWALE (SEE DRAINAGE PLANS)
  - EXISTING DRAINAGE SWALE
  - TEMPORARY FENCE FOR TREE PROTECTION (15 FEET PER SIDE = 60 FEET TOTAL)

REVISIONS	
NAME	DATE

ILLINOIS DEPARTMENT OF TRANSPORTATION  
 F.A.I. 94 (DAN RYAN EXPRESSWAY)  
 EROSION CONTROL PLAN  
 NB I-94 (DAN RYAN EXPRESSWAY)  
 STA. 2334+50.00 TO 2338+50.00  
 (SHEET 5 OF 11)  
 SCALE: 1"=20'  
 DATE: MARCH 7, 2006  
 DRAWN BY: JUS  
 CHECKED BY: JPA