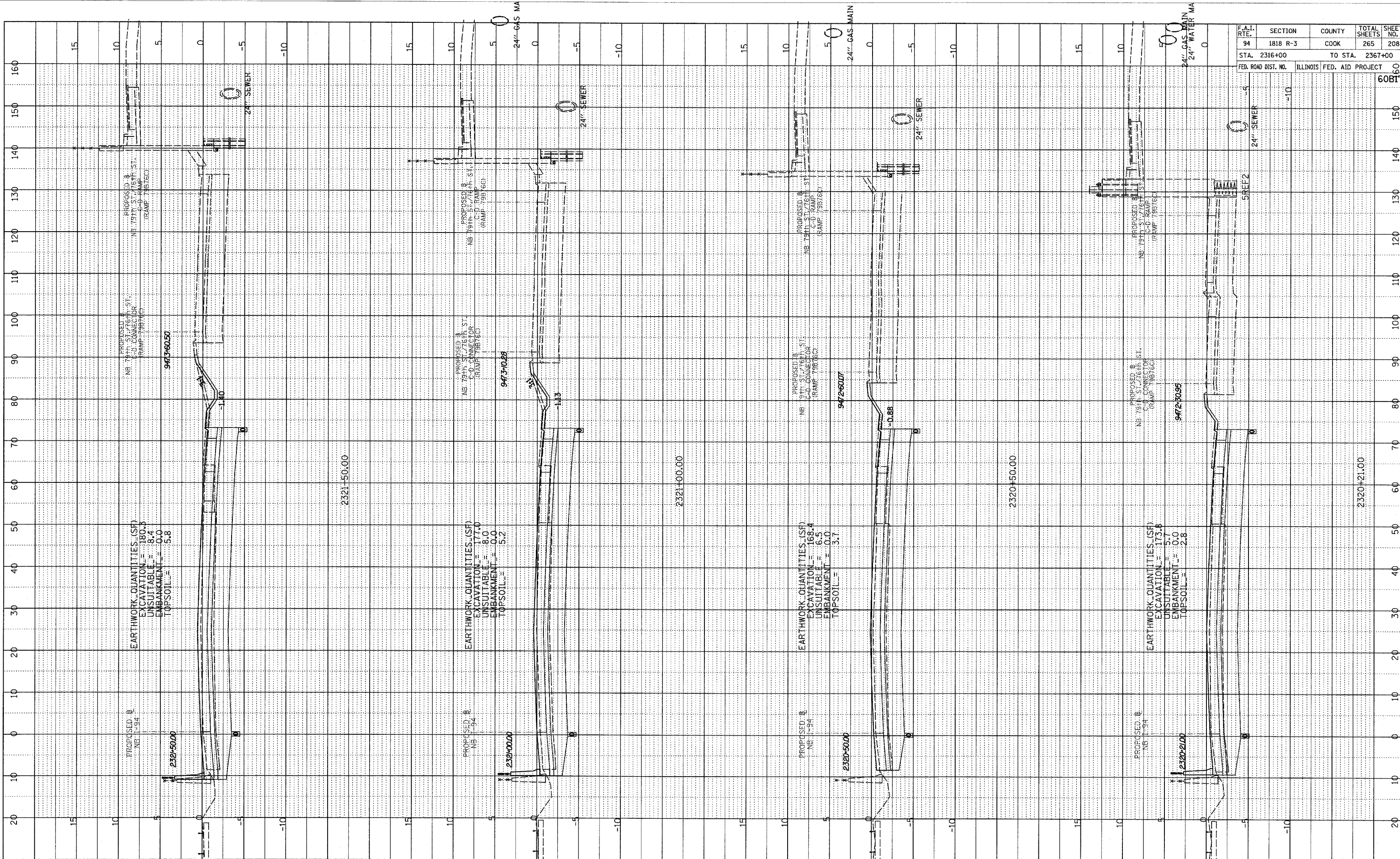
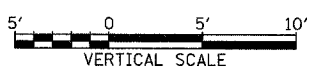
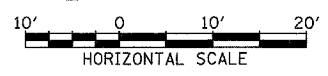


PROFILE SUBMITTED BY _____ DATE _____
 PLOTTED BY _____
 GRADINGS CHECKED BY _____
 STRUCTURE NOTATIONS DIBD NO. _____



F.A.I. RTE.	SECTION	COUNTY	TOTAL SHEETS	SHEET NO.
94	1818 R-3	COOK	265	208
STA. 2316+00		TO STA. 2367+00		
FED. ROAD DIST. NO.		ILLINOIS FED. AID PROJECT		
		60BT17		

TYLIN INTERNATIONAL



NORTHBOUND I-94 (DAN RYAN EXPWY)
 STA. 2321+00 TO STA. 2322+50

03/03/2006 04:09:21 PM
 P:\02373\road\2006\94\94R200\94R200\94R200\94R200.dwg