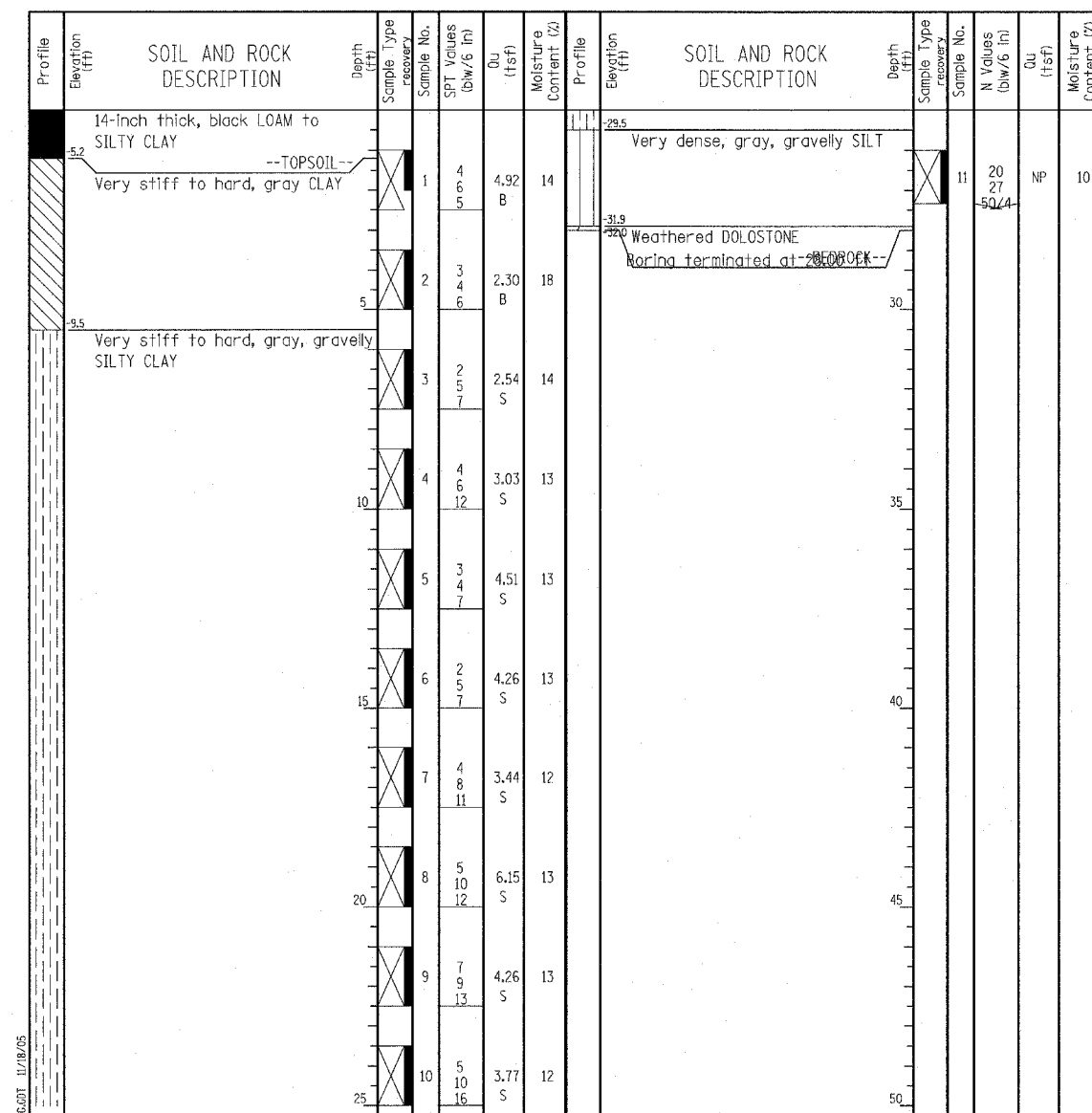
 <p>Wang Engineering, Inc. Consulting Geotechnical and Environmental Engineers wangeng3@wangeng.com 1145 Main Street Lombard, IL 60148 Telephone: 630 953-9928 Fax: 630 953-9938</p>	BORING LOG JP-31		Page 1 of 1
	WEI Job No.: 414-07-01		Datum: CCD
	Client: T. Y. LIN International	Elevation: -3.95 ft	
	Project: Dan Ryan Improvements; IDOT No. D-91-421-01	North: 1857489.56 ft	
Location: From 95th Street to South of 69th Street	East: 1177411.97 ft		Station: 2361+29.4
	Offset: 77.75 RT		



GENERAL NOTES				WATER LEVEL DATA	
Begin Drilling	05-13-2003	Complete Drilling	05-13-2003	While Drilling	☐ DRY
Drilling Contractor	Patrick Drilling	Drill Rig	CME 75 TMR	At Completion of Drilling	☐ DRY
Driller	K&J	Logger	S. Patel	Time After Drilling	NA
Drilling Method	3.25" ID. HSA; Boring backfilled with bentonite upon completion			Depth to Water	☐ NA
<small>The stratification lines represent the approximate boundary between soil types; the actual transition may be gradual.</small>					

LEGEND

NP	NON-PLASTIC
B	BULGE FAILURE
S	SHEAR FAILURE
P	POCKET PENETROMETER

TYLIN INTERNATIONAL

REVISIONS	
NAME	DATE

ILLINOIS DEPARTMENT OF TRANSPORTATION
F.A.I. 94 (DAN RYAN EXPRESSWAY)
SOIL BORINGS JP-31

SCALE: N.T.S. DRAWN BY: RTM
DATE: MARCH 7, 2006 CHECKED BY: MPG