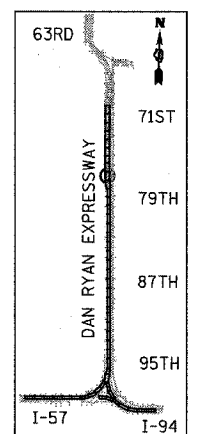
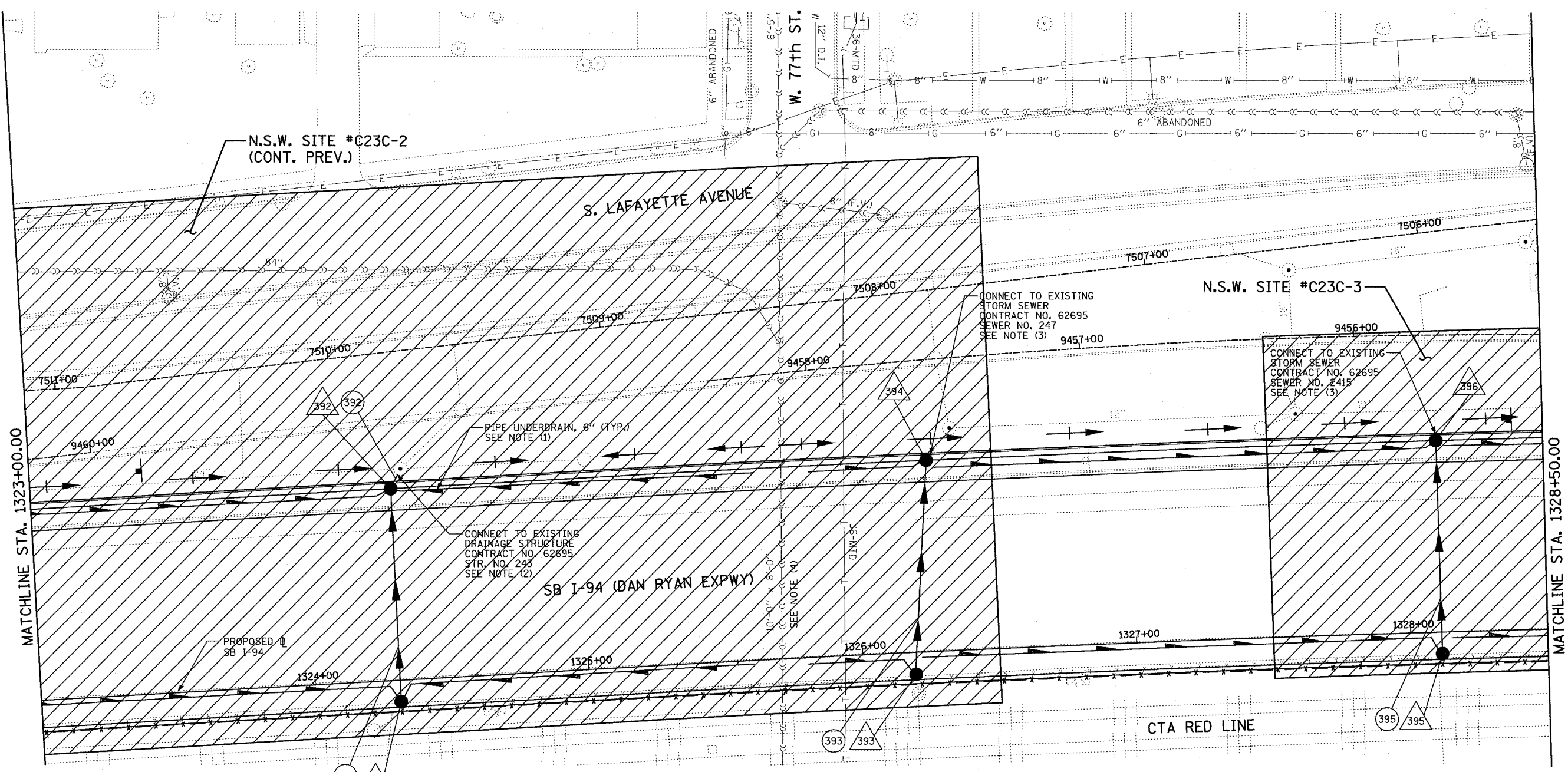


F.A.I. RTE.	SECTION	COUNTY	TOTAL SHEETS	SHEET NO.
94	1818 R-6	COOK	290	121
STA. 1313+00		TO STA. 1367+00		
FED. ROAD DIST. NO.		ILLINOIS	FED. AID PROJECT	

60B18



LOCATION MAP

1 NSW - NON SPECIAL WASTE SITES ADDED TO SHEET

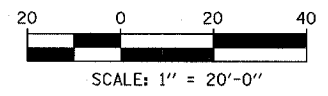
NOTES:

- FOR CLARITY, PIPE UNDERDRAINS ARE SHOWN OFFSET FROM THEIR PROPOSED LOCATIONS. FOR DETAILED PLACEMENT, SEE SHEET "PIPE UNDERDRAINS DETAIL."
- CORE DRILL AND CONNECT TO EXISTING DRAINAGE STRUCTURE. CONNECTION COST SHALL BE INCLUDED IN THE COST TO CONSTRUCT THE STORM SEWER.
- COST SHALL NOT BE PAID FOR SEPARATELY BUT INCLUDED IN COST OF SEWER INSTALLATION.
- THE CONTRACTOR SHALL COORDINATE ALL WORK WITH COC-DOWN SEWER SECTION PRIOR TO ANY EXCAVATION. RISER SHAFTS, IF ENCOUNTERED, SHALL BE CONSTRUCTED AND PAID FOR AS PER DETAIL SHOWN ON DRAINAGE DETAIL SHEET 3 OF 3.

LEGEND:

- EXISTING COMBINED SEWER
- PROPOSED STORM SEWER NUMBER (X=SHEET NO., Y=PIPE NO.)
- PROPOSED STRUCTURE NUMBER (X=SHEET NO., Y=STRUCTURE NO.)
- PIPE STUBOUT TO BE PLUGGED
- SEWER PLUG
- FIELD VERIFY
- UTILITY REMOVAL

TYLIN INTERNATIONAL



SHEET 39 OF 65

REVISIONS	
NAME	DATE

ILLINOIS DEPARTMENT OF TRANSPORTATION
F.A.I. 94 (DAN RYAN EXPRESSWAY)
DRAINAGE AND UTILITY PROPOSED PLAN
SB I-94 (DAN RYAN EXPRESSWAY)
DAN RYAN STA. 1323+00.00 TO 1328+50.00

SCALE: 1"=20'
DATE: MARCH 1, 2006

DRAWN BY: NSB
CHECKED BY: DA

ADDENDUM 1 - NSW 05/08/06