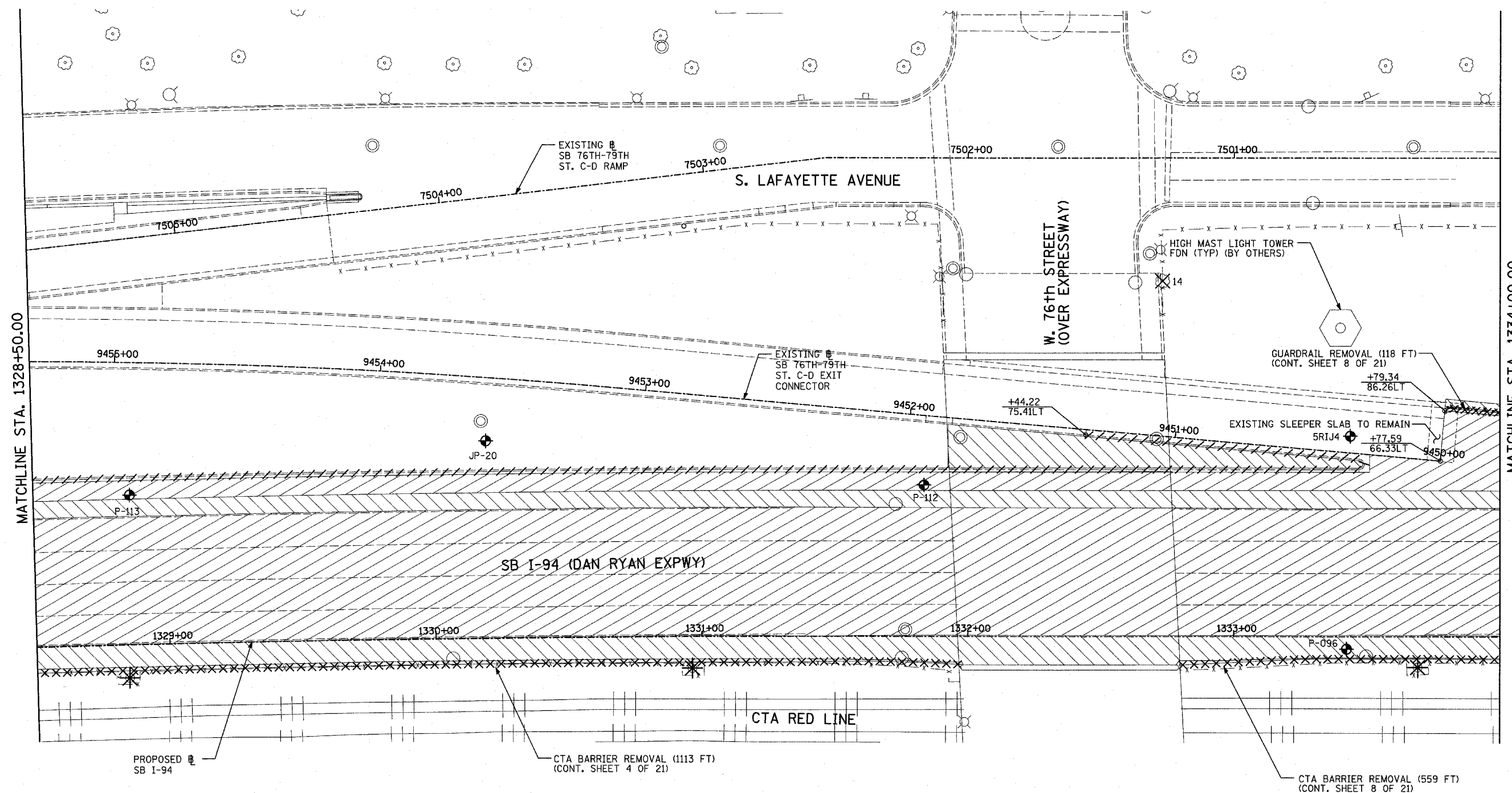


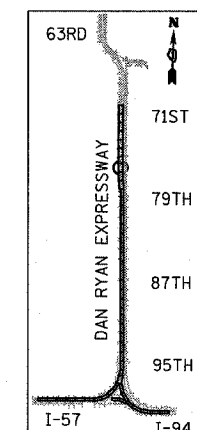
F.A.I. RTE.	SECTION	COUNTY	TOTAL SHEETS	SHEET NO.
94	1818 R-6	COOK	290	39
STA. 1313+00		TO STA. 1367+00		
FED. ROAD DIST. NO.	ILLINOIS FED. AID PROJECT			

60B18



MATCHLINE STA. 1334+00.00

MATCHLINE STA. 1328+50.00



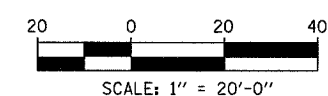
LOCATION MAP

LEGEND:

- | | | | | | |
|--|------------------------------------|--|---|--|---|
| | PAVEMENT REMOVAL | | PAVEMENT/SHOULDER REMOVAL (SPECIAL) (OVER EXISTING UTILITIES) | | TREE REMOVAL (UNITS) (NO UNIT SHOWN = <6) |
| | PAVED SHOULDER REMOVAL | | COMB CONC CURB & GUTTER REMOVAL | | SOIL BORING LOCATIONS |
| | BITUMINOUS SURFACE REMOVAL, 4" | | CHAIN LINK FENCE REMOVAL | | LIGHT POLE FOUNDATION REMOVAL (SEE ROADWAY LIGHTING & SURVEILLANCE PLANS) |
| | BITUMINOUS SURFACE REMOVAL, 1 1/2" | | CONCRETE BARRIER/GUARDRAIL REMOVAL | | |
| | BITUMINOUS SURFACE REMOVAL, 1 3/4" | | | | |
- +XX.XX MAINLINE @
 XX.XXRT STATION/OFFSET

PLAN NOTES:

- ALL STATION/OFFSET/RADIUS CALLOUTS MEASURED TO EDGE OF PAVEMENT UNLESS OTHERWISE NOTED.
- EXACT LOCATIONS OF EXISTING PIERS/ABUTMENTS TO BE FIELD VERIFIED



REVISIONS	
NAME	DATE

ILLINOIS DEPARTMENT OF TRANSPORTATION
 F.A.I. 94 (DAN RYAN EXPRESSWAY)
 EXISTING PLAN
 SB I-94 (DAN RYAN EXPRESSWAY)
 DAN RYAN STA. 1328+50.00 TO 1334+00.00

SCALE: 1"=20'
 DATE: MARCH 1, 2006

DRAWN BY: MPG
 CHECKED BY: RTM

TYLIN INTERNATIONAL