

F.A.I. RTE.	SECTION	COUNTY	TOTAL SHEETS	SHEET NO.
94	1818 R-6	COOK	290	55
STA. 1313+00		TO STA. 1367+00		
FED. ROAD DIST. NO.		ILLINOIS FED. AID PROJECT		

60B18

10

5

0

-5

-10

-15

-20

-25

15

10

5

0

-5

-10

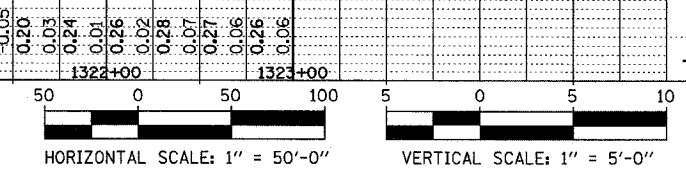
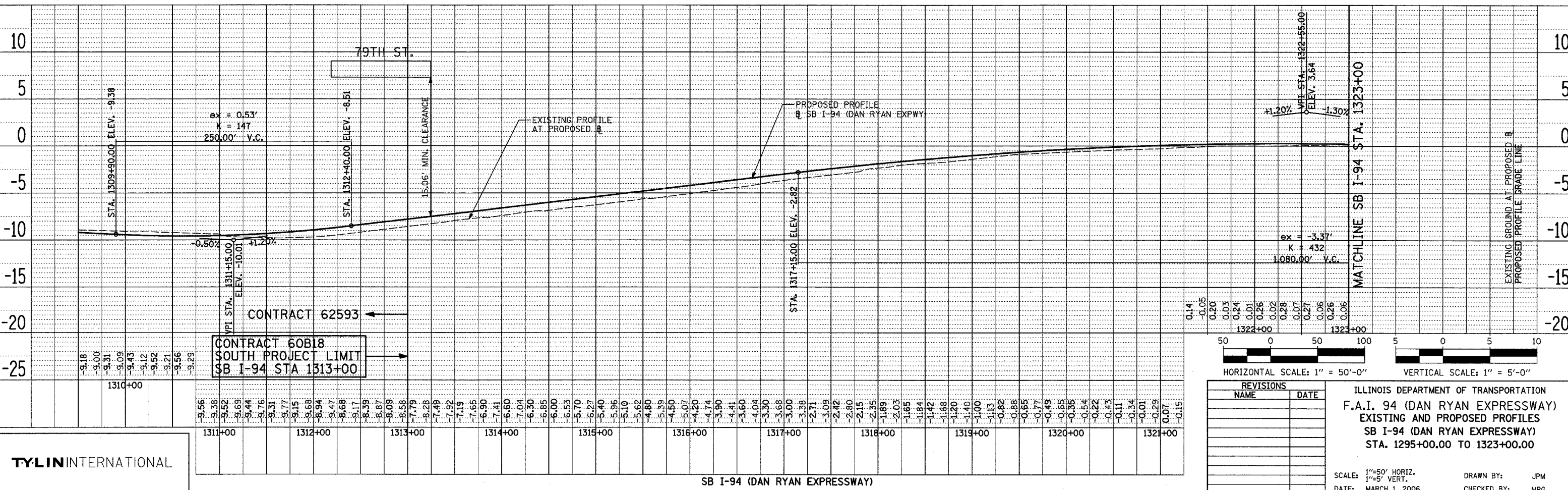
-15

-20

-25

PLAN	BY	DATE
REVISIONS		
PLOTTED		
ALIGNMENT CHECKED		
PROFILE CHECKED		
PAID FILE NAME		
NO.		

PLAN	BY	DATE
REVISIONS		
PLOTTED		
ALIGNMENT CHECKED		
PROFILE CHECKED		
PAID FILE NAME		
NO.		



REVISIONS	
NAME	DATE

ILLINOIS DEPARTMENT OF TRANSPORTATION
 F.A.I. 94 (DAN RYAN EXPRESSWAY)
 EXISTING AND PROPOSED PROFILES
 SB I-94 (DAN RYAN EXPRESSWAY)
 STA. 1295+00.00 TO 1323+00.00

SCALE: 1"=50' HORIZ.
 1"=5' VERT.
 DATE: MARCH 1, 2006

DRAWN BY: JPM
 CHECKED BY: MPG

TYLINT INTERNATIONAL

SB I-94 (DAN RYAN EXPRESSWAY)