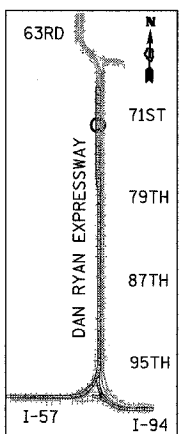
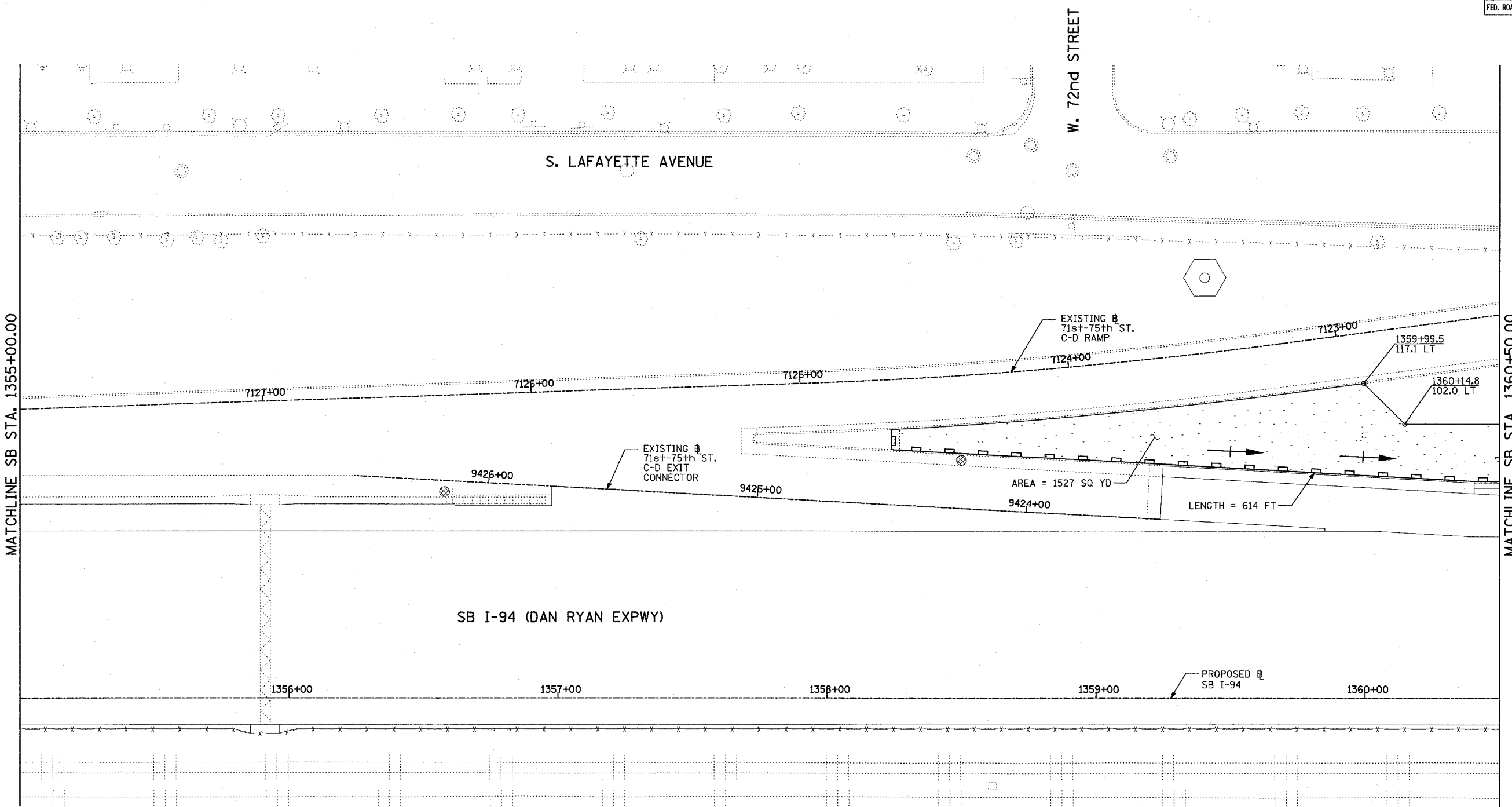
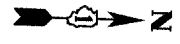
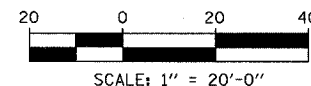


F.A.I. RTE.	SECTION	COUNTY	TOTAL SHEETS	SHEET NO.
94	1818 R-6	COOK	290	113
STA. 1313+00		TO STA. 1367+00		
FED. ROAD DIST. NO.		ILLINOIS FED. AID PROJECT		

60B18



LOCATION MAP



**LEGEND:**

- TEMPORARY EROSION CONTROL SEEDING
- SEDIMENT CONTROL, SILT FENCE
- INLET FILTER, TO BE INSTALLED IN OFF PROJECT DRAINAGE STRUCTURES ACCEPTING STORMWATER RUNOFF
- TEMPORARY FENCE
- TEMPORARY DITCH CHECK
- PROPOSED DRAINAGE SWALE (SEE DRAINAGE PLANS)
- EXISTING DRAINAGE SWALE
- TEMPORARY FENCE FOR TREE PROTECTION (15 FEET PER SIDE = 60 FEET TOTAL)

TOTAL NUMBER OF INLET FILTERS THIS SHEET: 2  
 TOTAL NUMBER OF TEMPORARY DITCH CHECKS THIS SHEET: 0  
 TOTAL NUMBER OF TREES TO BE PROTECTED THIS SHEET: 0

REVISIONS	
NAME	DATE

ILLINOIS DEPARTMENT OF TRANSPORTATION  
 F.A.I. 94 (DAN RYAN EXPRESSWAY)  
 EROSION CONTROL PLAN  
 SB I-94 (DAN RYAN EXPRESSWAY)  
 STA. 1355+00.00 TO 1360+50.00  
 SHEET 9 OF 11

SCALE: 1"=20'  
 DATE: MARCH 1, 2006

DRAWN BY: JJS  
 CHECKED BY: MPG

**TYLIN** INTERNATIONAL