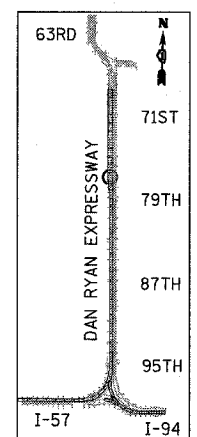
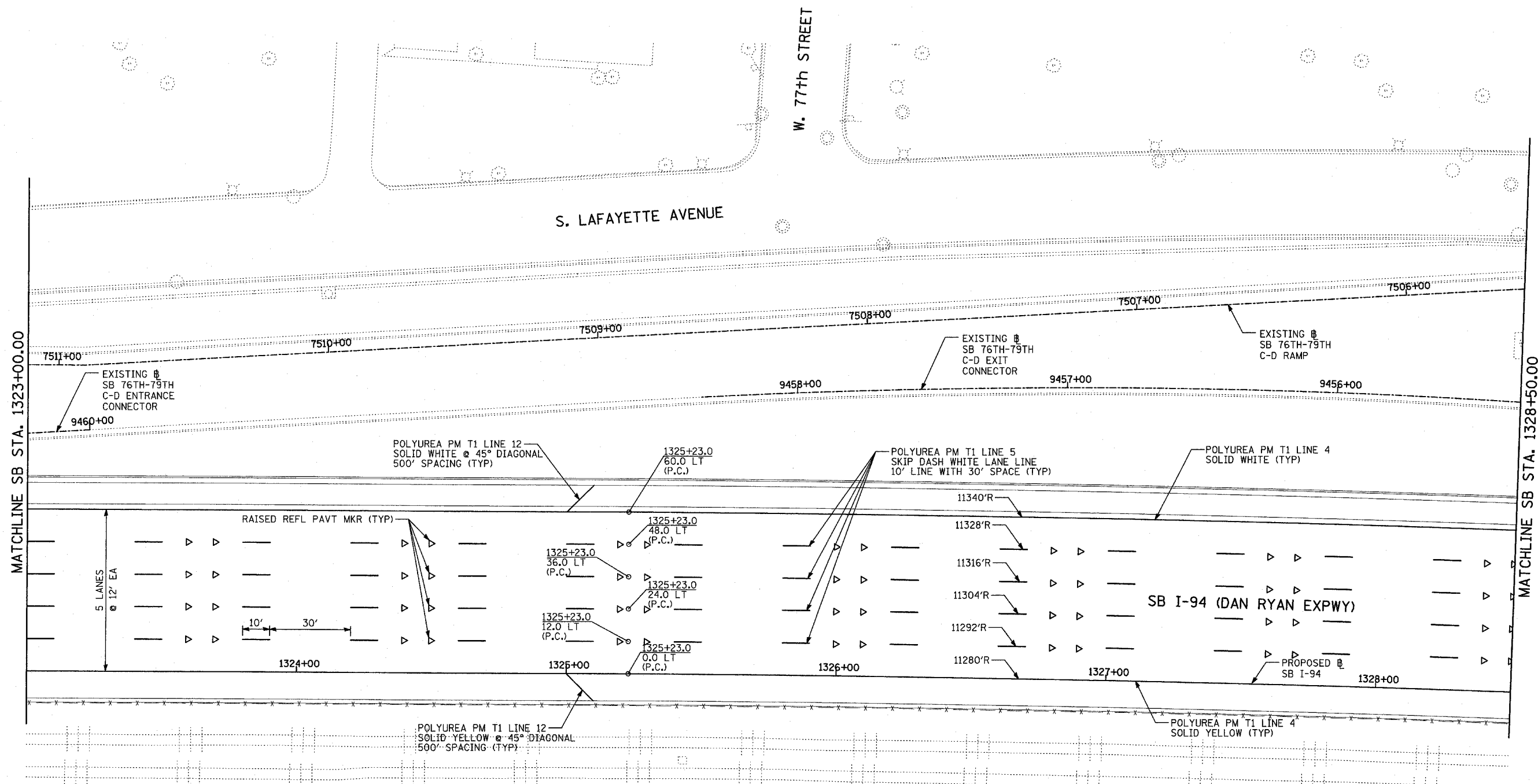


F.A.I. RTE.	SECTION	COUNTY	TOTAL SHEETS	SHEET NO.
94	1818 R-6	COOK	290	161
STA. 1313+00		TO STA. 1367+00		
FED. ROAD DIST. NO.	ILLINOIS	FED. AID PROJECT		

60B18



LOCATION MAP



SCALE: 1" = 20'-0"

**PAVEMENT MARKING NOTES:**

- PAVEMENT MARKINGS SHALL BE IN ACCORDANCE WITH IDOT DISTRICT ONE STANDARD TC-12. RAISED PAVEMENT MARKERS SHALL NOT BE INSTALLED, EXCEPT AS SHOWN ON THE PLANS.
- THE RESIDENT ENGINEER SHALL CONTACT JULIA FOX (847) 705-4151, EXPRESSWAY TRAFFIC CONTROL SUPERVISOR, PRIOR TO PLACING ANY PAVEMENT MARKINGS.

**TYLIN** INTERNATIONAL

REVISIONS	
NAME	DATE

ILLINOIS DEPARTMENT OF TRANSPORTATION  
 F.A.I. 94 (DAN RYAN EXPRESSWAY)  
 PAVEMENT MARKING PLAN  
 SB I-94 (DAN RYAN EXPRESSWAY)  
 STA. 1323+00.00 TO 1328+50.00  
 SHEET 3 OF 13

SCALE: 1"=20'  
 DATE: MARCH 1, 2006

DRAWN BY: JJS  
 CHECKED BY: MPG