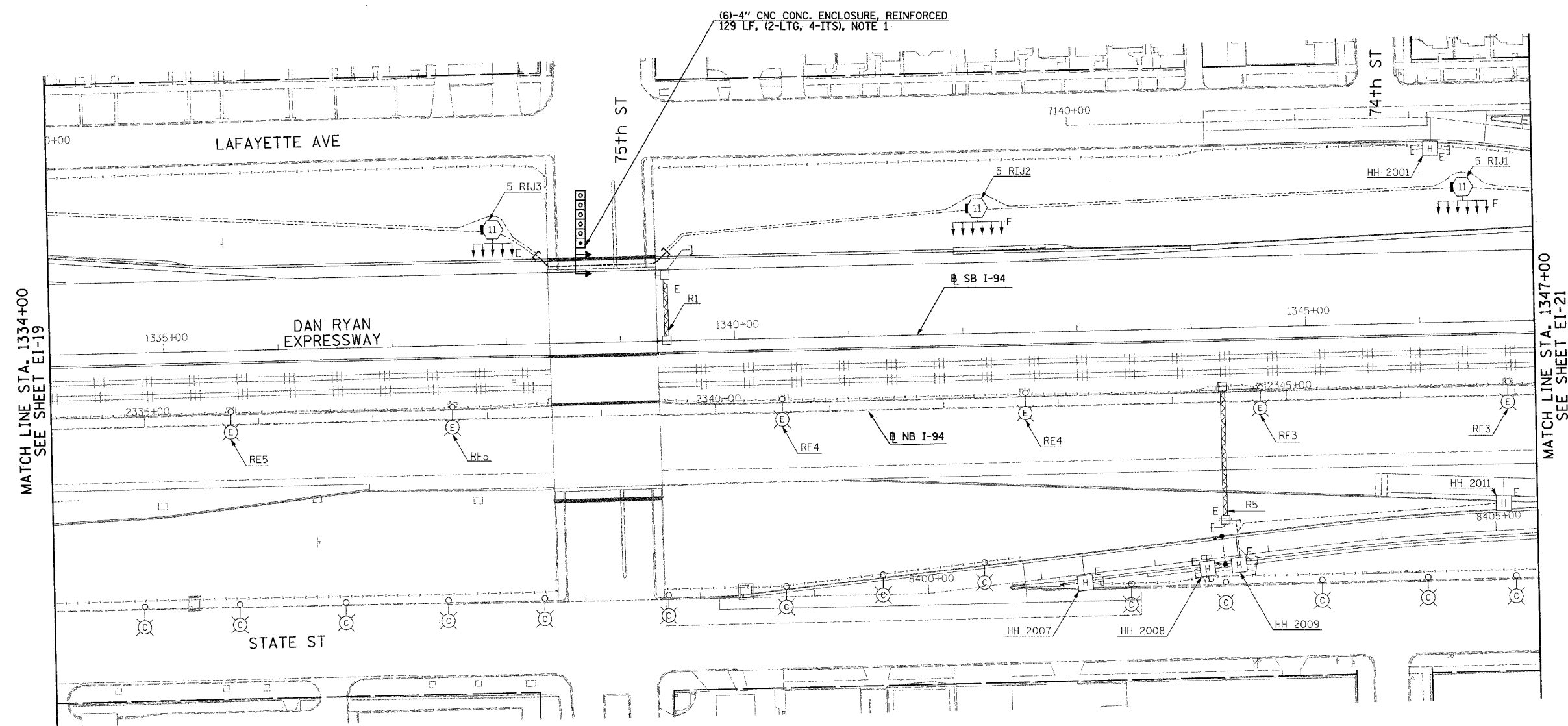


F.A.I. RTE.	SECTION	COUNTY	TOTAL SHEETS	SHEET NO.
94	1818 R-6	COOK	290	194
STA. 1334+00		TO STA. 1347+00		
FED. ROAD DIST. NO.	ILLINOIS	FED. AID PROJECT		

60B18

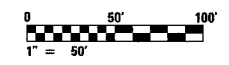
**NOTES:**

- REFER TO SHEETS EI-102 AND EI-103 FOR DUCTBANK INSTALLATION DETAILS.



MATCH LINE STA. 1334+00  
SEE SHEET EI-19

MATCH LINE STA. 1347+00  
SEE SHEET EI-21



23C/EI-20

REVISIONS	
NAME	DATE

ILLINOIS DEPARTMENT OF TRANSPORTATION  
F.A.I. 94 (DAN RYAN EXPRESSWAY)

ELECTRICAL INFRASTRUCTURE PLANS  
PROPOSED IMPROVEMENTS

SCALE: 1"=50'      DRAWN BY: VK  
DATE: MARCH 1, 2006      CHECKED BY: TM

**SINGH** 300 W. ADAMS ST.  
CHICAGO, IL 60606  
SINGH & ASSOCIATES, INC. TEL: (312) 629-0240  
CONSULTING ENGINEERS FAX: (312) 629-8449

2/27/2006 11:38:44 AM