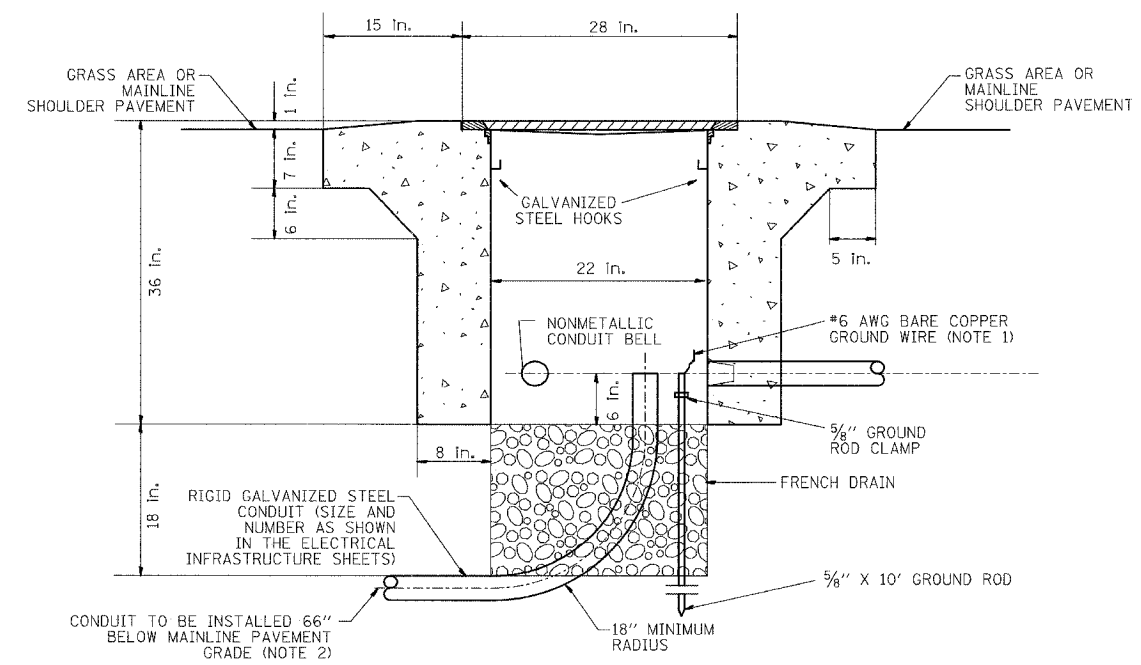
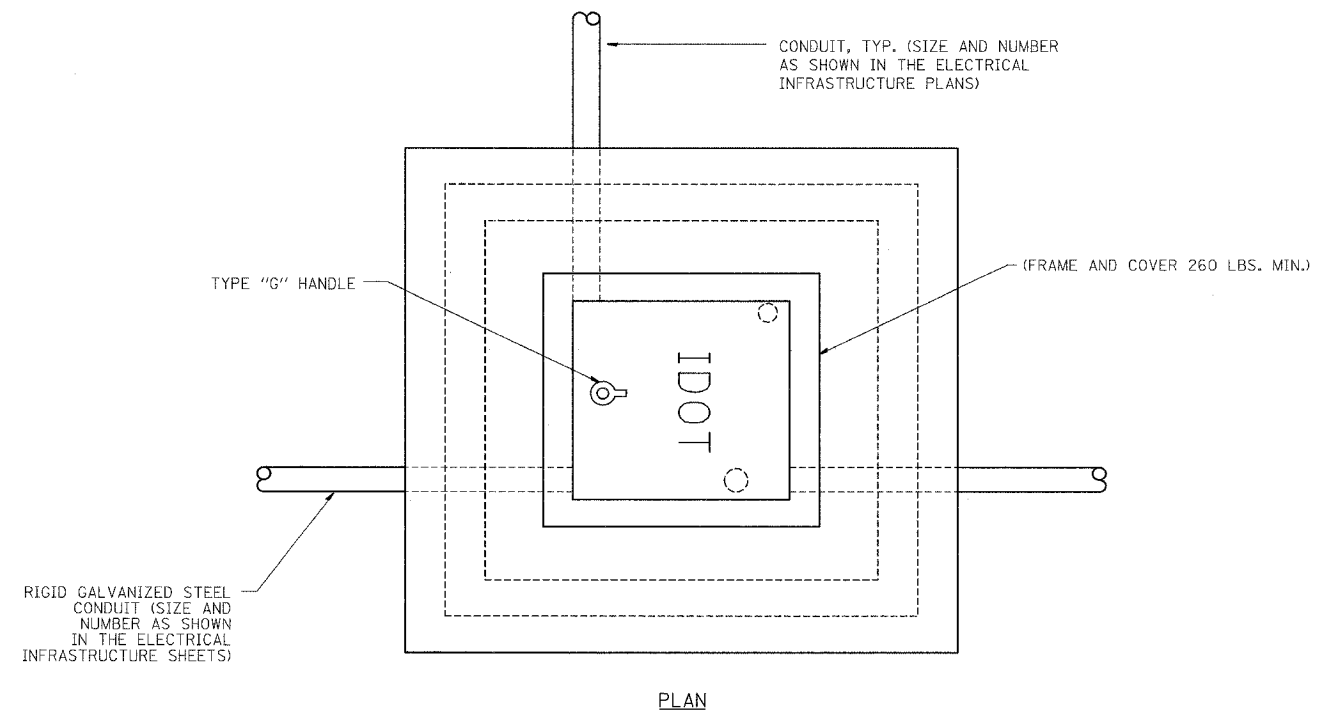


F.A.I. RTE.	SECTION	COUNTY	TOTAL SHEETS	SHEET NO.
94	1818 R-6	COOK	290	199
STA.		TO STA.		
FED. ROAD DIST. NO.	ILLINOIS	FED. AID PROJECT		

60B18



ELEVATION
PC CONCRETE
HEAVY DUTY HANDHOLE, TYPE S1
 (FOR INSTALLATION IN MAINLINE SHOULDER WIDER THAN 6' OR BEHIND PAVED AREA)

NOTE:
 1. ALL METALLIC ELEMENTS SHALL BE GROUND IN ACCORDANCE WITH THE NATIONAL ELECTRIC CODE (NEC), SECTION 250, GROUNDING. METAL COVERS AND OTHER EXPOSED CONDUCTIVE SURFACES SHALL BE BONDED IN ACCORDANCE WITH NEC ARTICLE 250.96 (A).
 2. CONDUIT TO BE INSTALLED BELOW MAINLINE PAVEMENT WHERE SHOWN IN THE ELECTRICAL INFRASTRUCTURE PLANS (SEE SHEET EI-110).

SINGH 300 W. ADAMS ST.
 CHICAGO, IL 60606
 SINGH & ASSOCIATES, INC. TEL: (312) 629-0240
 CONSULTING ENGINEERS FAX: (312) 629-8449

REVISIONS	
NAME	DATE

ILLINOIS DEPARTMENT OF TRANSPORTATION
 F.A.I. 94 (DAN RYAN EXPRESSWAY)
 PC CONCRETE - HEAVY DUTY HANDHOLE DETAIL, TYPE S1 AND TYPE S1 (SPECIAL)
 SCALE: NTS DRAWN BY: CJH
 DATE: MARCH 1, 2006 CHECKED BY: MJL

2/27/2006 11:49:27 AM