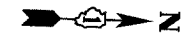


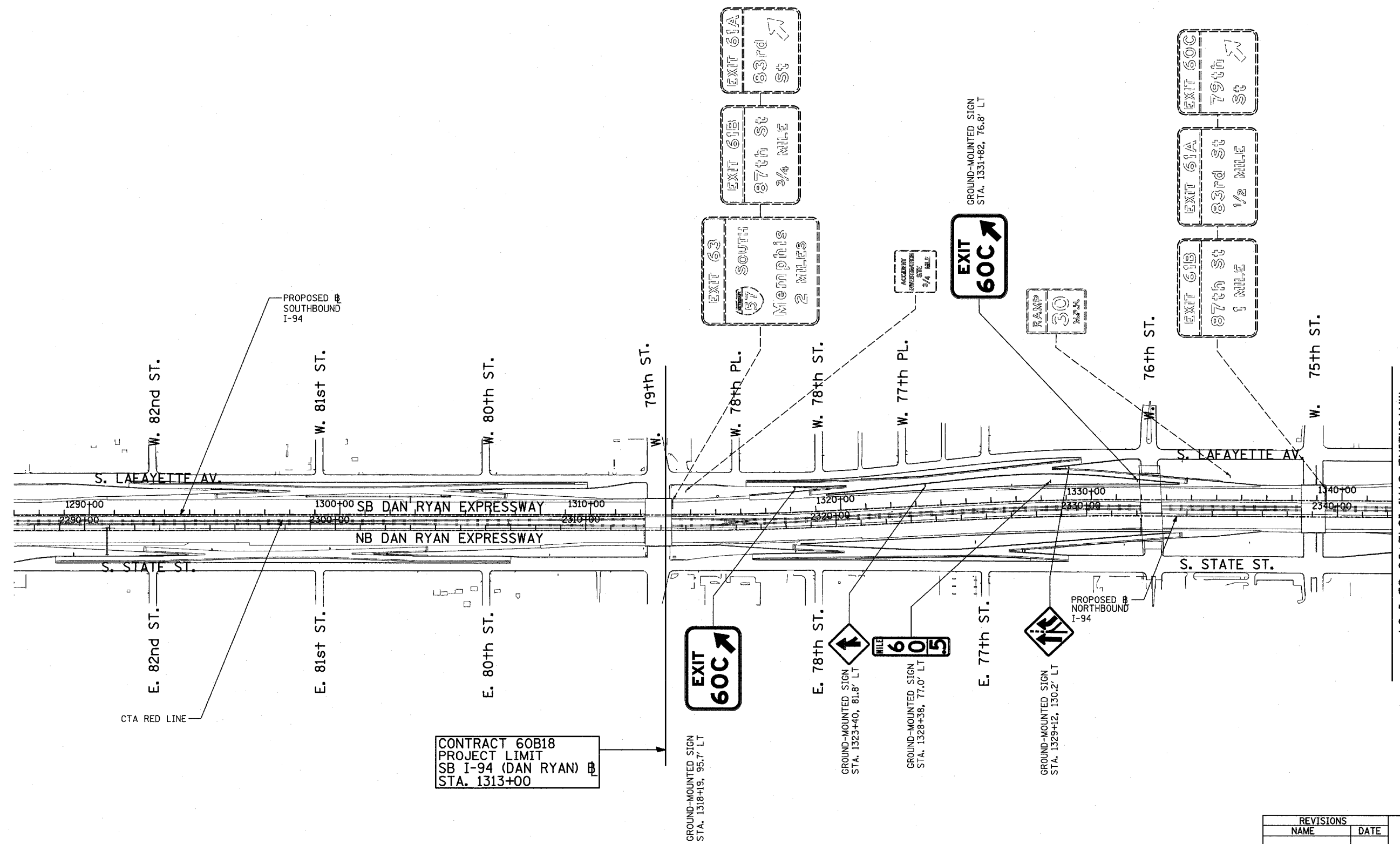
F.A.I. RTE.	SECTION	COUNTY	TOTAL SHEETS	SHEET NO.
94	1818 R-6	COOK	290	205
STA. 1313+00		TO STA. 1367+00		
FED. ROAD DIST. NO.	ILLINOIS	FED. AID PROJECT		

60B18



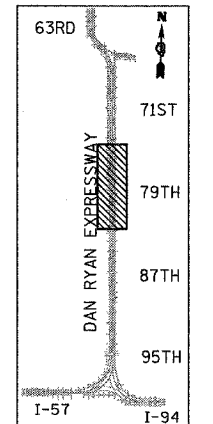
SIGNING LEGEND:

- - - - - PROPOSED GROUND MOUNTED SIGN
- - - - - PROPOSED OVERHEAD SIGN STRUCTURE - TRUSS
- - - - - PROPOSED OVERHEAD SIGN STRUCTURE-BRIDGE MOUNTED
- - - - - PROPOSED OVERHEAD SIGN STRUCTURE-CANTILEVER
- - - - - EXISTING GROUND MOUNTED SIGN
- - - - - EXISTING OVERHEAD SIGN STRUCTURE - TRUSS
- - - - - EXISTING OVERHEAD SIGN STRUCTURE-BRIDGE MOUNTED
- - - - - EXISTING OVERHEAD SIGN STRUCTURE-CANTILEVER
- PROPOSED SIGN
- EXISTING SIGN



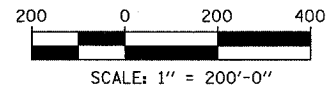
CONTRACT 60B18
PROJECT LIMIT
SB I-94 (DAN RYAN) @
STA. 1313+00

MATCHLINE STA. 1342+00 SB I-94



LOCATION MAP

TYLIN INTERNATIONAL



REVISIONS	
NAME	DATE

ILLINOIS DEPARTMENT OF TRANSPORTATION
F.A.I. 94 (DAN RYAN EXPRESSWAY)

PROPOSED SIGNING
STA. 1287+00 TO STA 1342+00
SHEET 1 OF 2

SCALE: 1" = 200'
DATE: MARCH 1, 2006

DRAWN BY: AMB
CHECKED BY: TGB