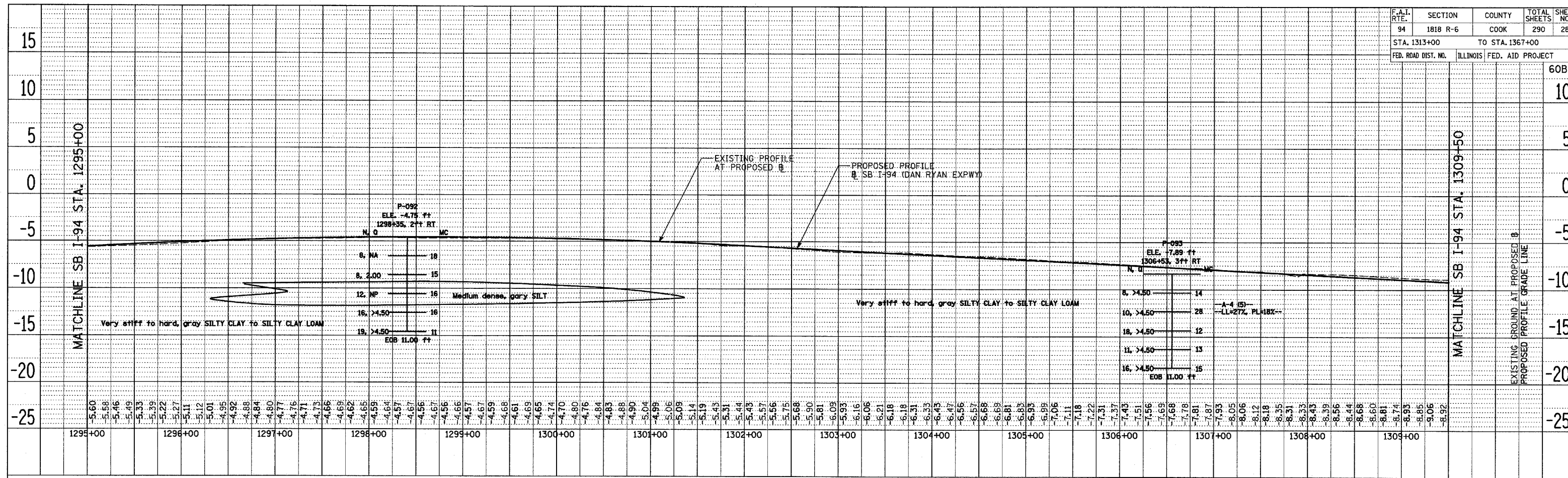
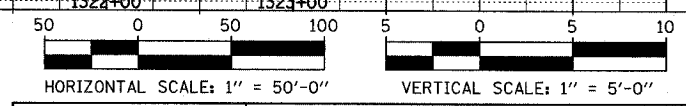
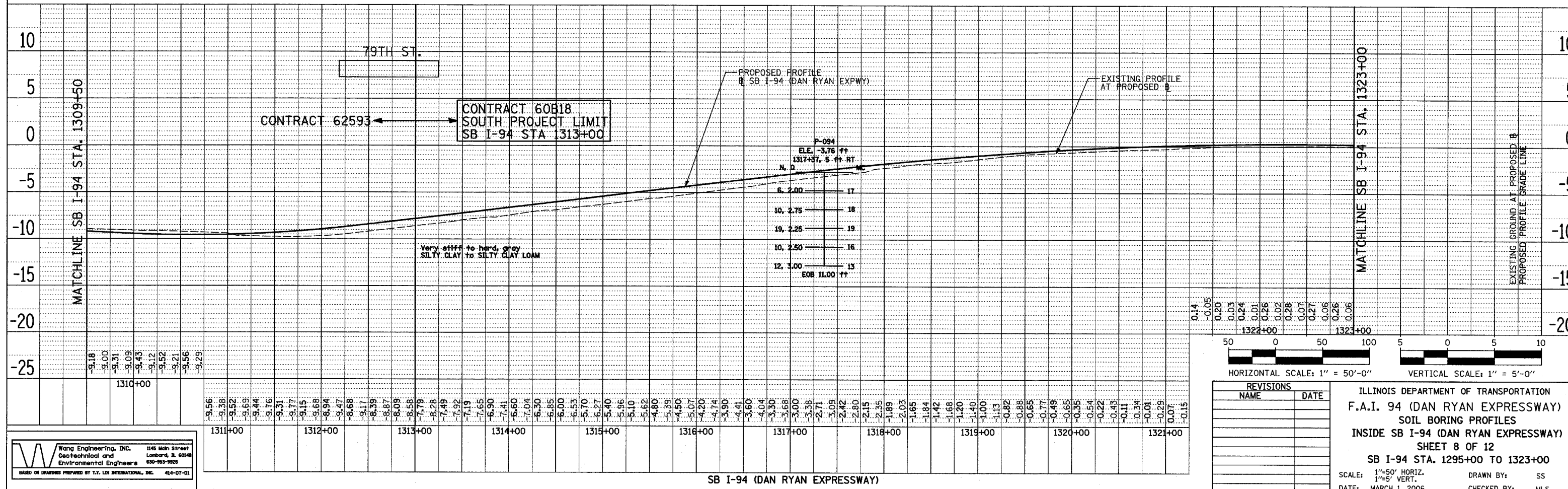


DATE: \_\_\_\_\_ BY: \_\_\_\_\_  
 SURVEYED: \_\_\_\_\_  
 PLAN: \_\_\_\_\_  
 NOTE BOOK: \_\_\_\_\_  
 NO. \_\_\_\_\_  
 ALIGNMENT CHECKED: \_\_\_\_\_  
 RT. OF WAY CHECKED: \_\_\_\_\_  
 PAID FILE NAME: \_\_\_\_\_



DATE: \_\_\_\_\_ BY: \_\_\_\_\_  
 SURVEYED: \_\_\_\_\_  
 PLAN: \_\_\_\_\_  
 NOTE BOOK: \_\_\_\_\_  
 NO. \_\_\_\_\_  
 ALIGNMENT CHECKED: \_\_\_\_\_  
 RT. OF WAY CHECKED: \_\_\_\_\_  
 PAID FILE NAME: \_\_\_\_\_



REVISIONS	
NAME	DATE

ILLINOIS DEPARTMENT OF TRANSPORTATION  
 F.A.I. 94 (DAN RYAN EXPRESSWAY)  
 SOIL BORING PROFILES  
 INSIDE SB I-94 (DAN RYAN EXPRESSWAY)  
 SHEET 8 OF 12  
 SB I-94 STA. 1295+00 TO 1323+00

SCALE: 1"=50' HORIZ.  
 1"=5' VERT.  
 DATE: MARCH 1, 2006  
 DRAWN BY: SS  
 CHECKED BY: MLS

**W** Wang Engineering, Inc. 1145 Main Street  
 Geotechnical and Environmental Engineers Lombard, IL 60148  
 630-953-9928  
 BASED ON DRAWINGS PREPARED BY T.Y. LIN INTERNATIONAL, INC. (14-07-01)